

THE CORPORATION OF THE MUNICIPALITY OF STRATHROY-CARADOC

BYLAW NO. 05-22

**BEING A BY-LAW TO DEDICATE CERTAIN LANDS AS PART OF
THE PUBLIC HIGHWAY**

WHEREAS Section 31(2) of the Municipal Act, 2001, S.O. 2001, c. 25 confers that land may only become a highway by virtue of a by-law establishing the highway and not by the activities of the municipality or any person in relation to the land.

**NOW THEREFORE THE COUNCIL OF THE CORPORATION OF THE
MUNICIPALITY OF STRATROY-CARADOC ENACTS AS FOLLOWS:**

1. **THAT** the lands which are situated in the Municipality of Strathroy-Caradoc, in the County of Middlesex, being Part 5 33R-21014, registered in the Land Registry Office for Land Titles Division on Middlesex (No. 33); be are they are hereby dedicated as part of the public highway known as "Wright Street".
2. **THAT** the lands which are situated in the Municipality of Strathroy-Caradoc, in the County of Middlesex, being Part 4 and Part 2 33R-19883, registered in the Land Registry Office for Land Titles Division on Middlesex (No. 33); be are they are hereby dedicated as part of the public highway known as "Doune Street".
3. **THAT** the lands which are situated in the Municipality of Strathroy-Caradoc, in the County of Middlesex, being Block 85 and 86 Registered Plan 33M-648, registered in the Land Registry Office for Land Titles Division on Middlesex (No. 33); be are they are hereby dedicated as part of the public highway known as "Metcalfe Street West"

READ A FIRST AND SECOND TIME this 17th day of January, 2022.

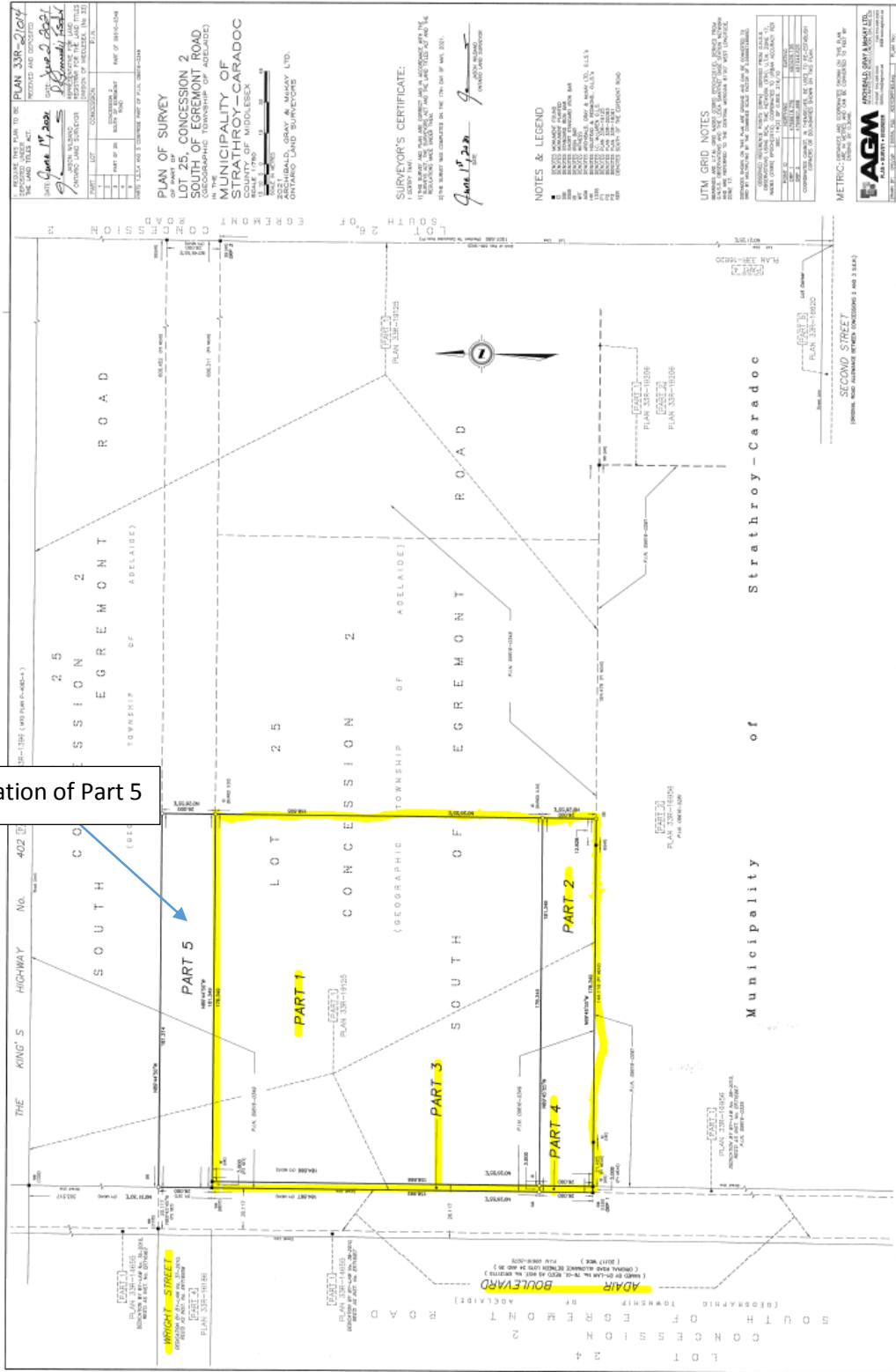
**READ A THIRD TIME AND FINALLY PASSED in Open Council this 17th day of
January, 2022.**

Mayor

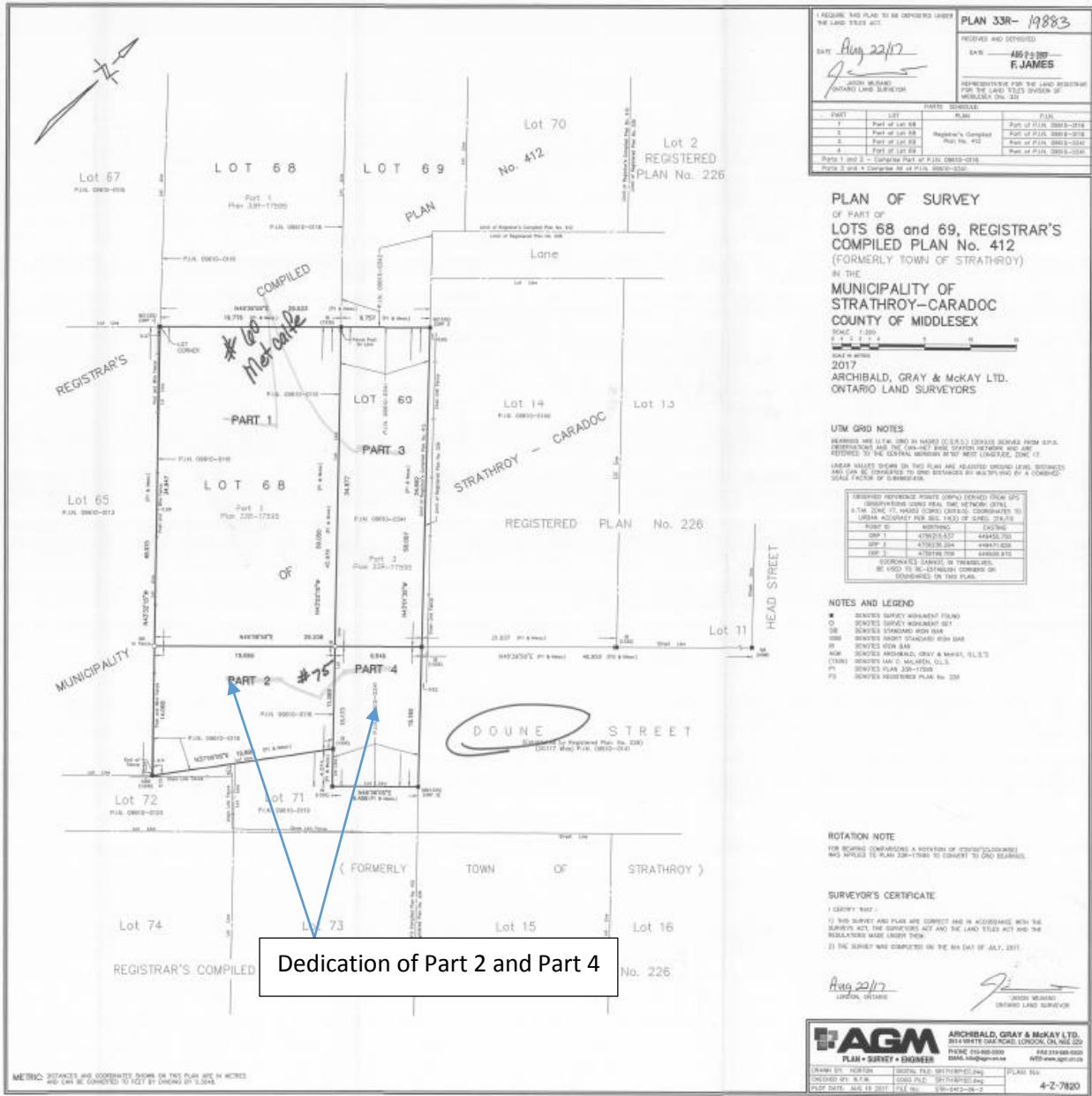
Clerk

ATTACHMENT NO 1 (Wright Street dedication)

Dedication of Part 5



ATTACHMENT NO 2 (Doune Street dedication)



**ATTACHMENT NO 3
(Metcalfe Street W Dedication)**



Road Widening Dedication