

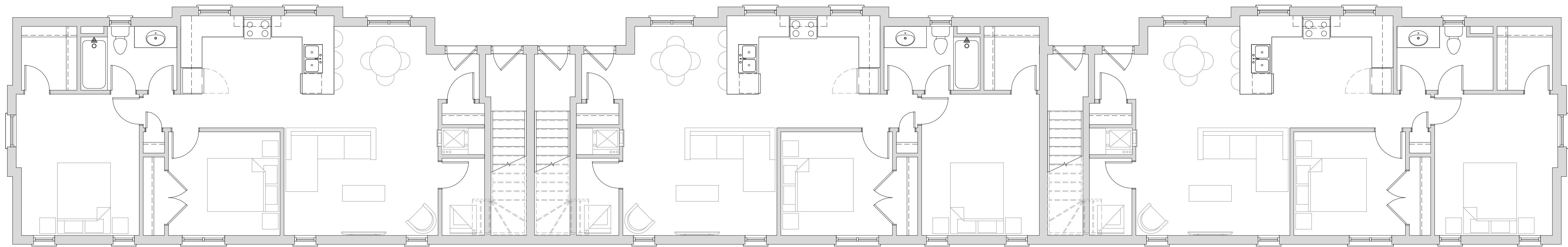
UNIT 1 AREA		
UNIT TYPE	LVL	LVL AREA
LOWER END UNIT	LEVEL 1 (GROUND)	959 ft ²
GROSS UNIT AREA:		959 ft ²

UNIT 2 AREA		
UNIT TYPE	LVL	LVL AREA
UPPER END UNIT	LEVEL 1 (GROUND)	78 ft ²
UPPER END UNIT	LEVEL 2	1047 ft ²
GROSS UNIT AREA:		1125 ft ²

UNIT 3 AREA		
UNIT TYPE	LVL	LVL AREA
UPPER INT. UNIT	LEVEL 1 (GROUND)	78 ft ²
UPPER INT. UNIT	LEVEL 2	1036 ft ²
GROSS UNIT AREA:		1114 ft ²

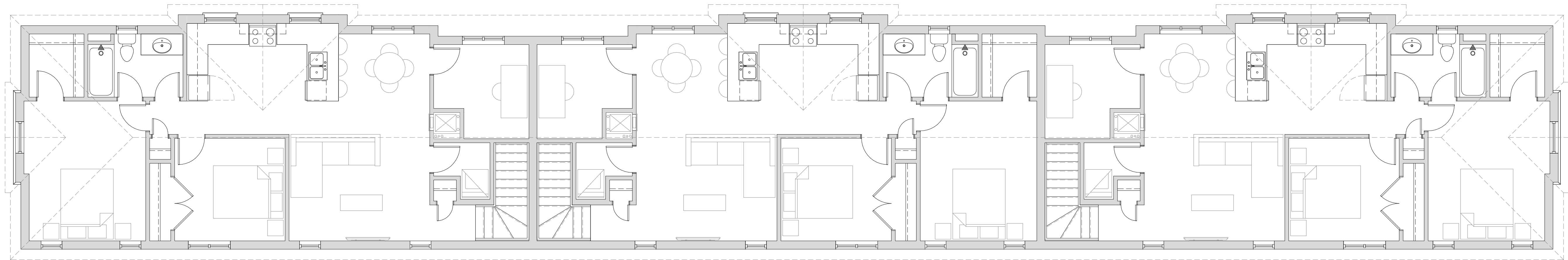
UNIT 4 AREA		
UNIT TYPE	LVL	LVL AREA
LOWER INT. UNIT	LEVEL 1 (GROUND)	948 ft ²
GROSS UNIT AREA:		948 ft ²

UNIT 5 AREA		
UNIT TYPE	LVL	LVL AREA
UPPER END UNIT	LEVEL 1 (GROUND)	78 ft ²
UPPER END UNIT	LEVEL 2	1045 ft ²
GROSS UNIT AREA:		1123 ft ²



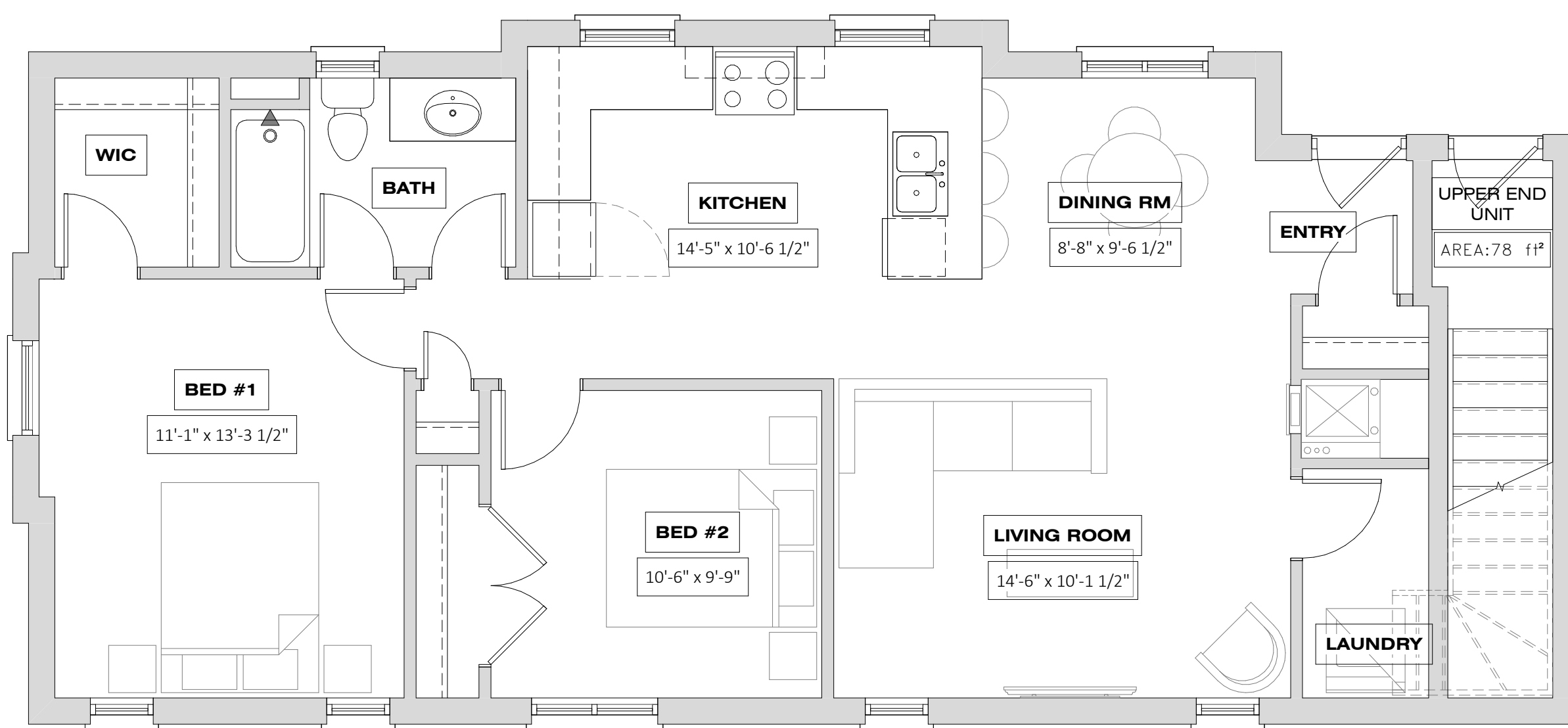
OVERALL LEVEL 1 (GROUND) FLOOR PLAN

SCALE: 3/16" = 1'-0"



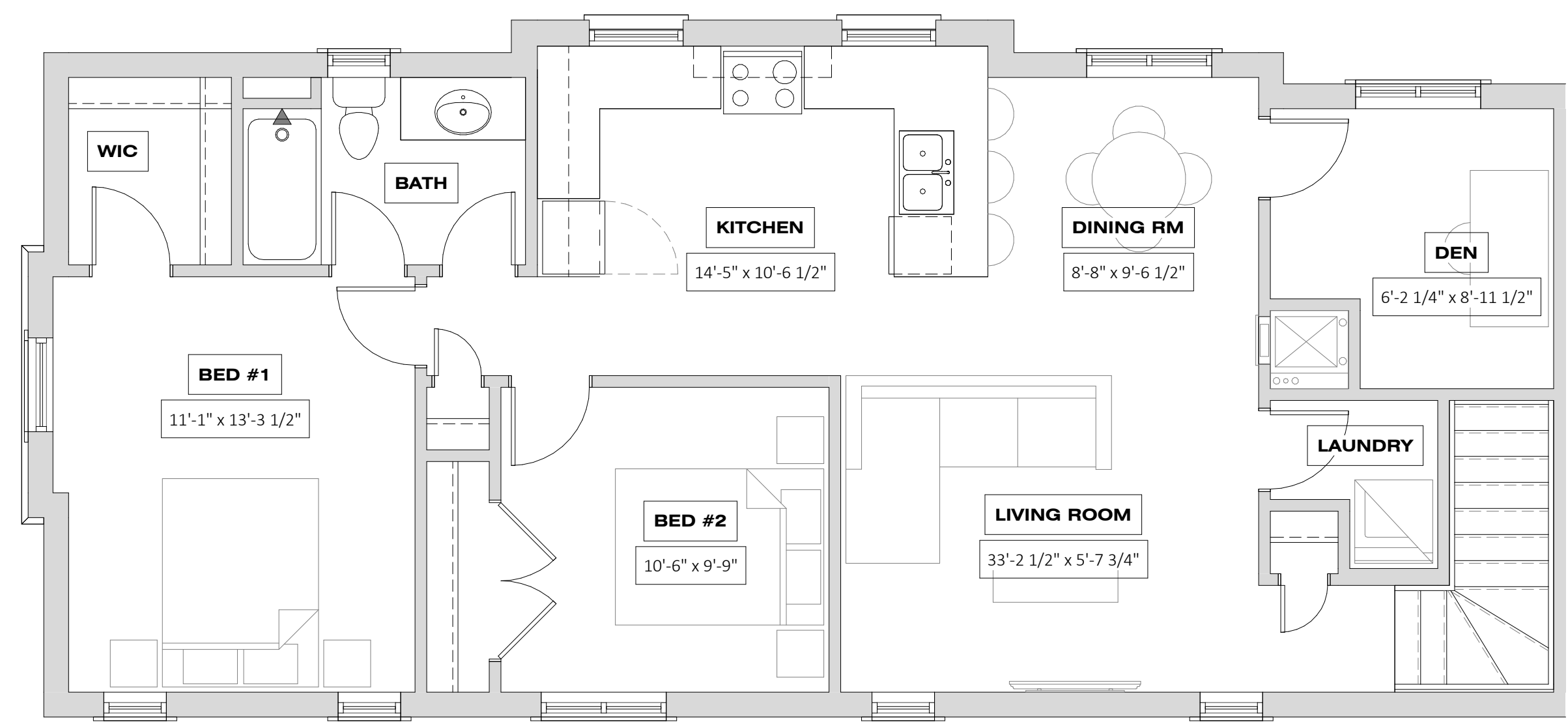
OVERALL LEVEL 2 FLOOR PLAN

SCALE: 3/16" = 1'-0"



LOWER UNIT - ENLARGED PLAN

SCALE: 1/4" = 1'-0"



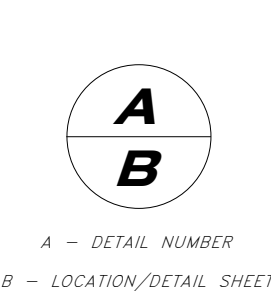
UPPER UNIT - ENLARGED PLAN

SCALE: 1/4" = 1'-0"

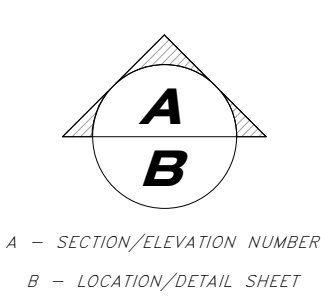
GENERAL NOTES

- IT IS THE RESPONSIBILITY OF THE APPROPRIATE CONTRACTOR TO CHECK AND VERIFY ALL DIMENSIONS ON SITE AND REPORT TO STRIK BALDINELLI MONIZ LTD. & MUST BE RETURNED UPON COMPLETION OF THIS PROJECT.
- THIS DRAWING & ALL DETAILS ARE FOR THIS PROJECT ONLY AND SHOULD NOT BE USED FOR ANY OTHER WORK.
- CONTRACTOR IS FULLY RESPONSIBLE FOR MATTERS AFFECTING CONSTRUCTION.
- ANY MATERIAL ALTERATIONS CARRIED OUT DURING CONSTRUCTION BY THE CONTRACTOR OR ASSOCIATED SUB-CONTRACTOR SHALL BE CONFIRMED WITH THE ENGINEER PRIOR TO INSTALL. FAILURE TO DO SO RESULTS IN FULL CONTRACTOR RESPONSIBILITY FOR SYSTEMS EFFECTED.
- ALL DRAWINGS & SPECIFICATIONS ARE THE PROPERTY OF STRIK BALDINELLI MONIZ LTD. & MUST BE RETURNED UPON COMPLETION OF THIS PROJECT.
- THIS DRAWING & ALL DETAILS ARE FOR THIS PROJECT ONLY AND SHOULD NOT BE USED FOR ANY OTHER WORK.
- CONTRACTOR IS FULLY RESPONSIBLE FOR MATTERS AFFECTING CONSTRUCTION.
- ANY MATERIAL ALTERATIONS CARRIED OUT DURING CONSTRUCTION BY THE CONTRACTOR OR ASSOCIATED SUB-CONTRACTOR SHALL BE CONFIRMED WITH THE ENGINEER PRIOR TO INSTALL. FAILURE TO DO SO RESULTS IN FULL CONTRACTOR RESPONSIBILITY FOR SYSTEMS EFFECTED.

DETAIL SYMBOL



ELEVATION SYMBOL



STRIK BALDINELLI MONIZ
 PLANNING • CIVIL • STRUCTURAL • MECHANICAL • ELECTRICAL
 1599 Adelaide St. N. Unit 301, London Ontario, N5X 4E8
 Tel: (519) 471-6667 Fax: (519) 471-0034
 Email: sbm@sbtmld.ca

PRELIMINARY FOR REVIEW ONLY
 ENGINEER'S STAMP

PROJECT/CLIENT:

BAKKER DESIGN & BUILD STACKED TOWNHOUSE (6 UNITS) 25 HEAD ST. N. STRATHROY ON

DRAWING TITLE:

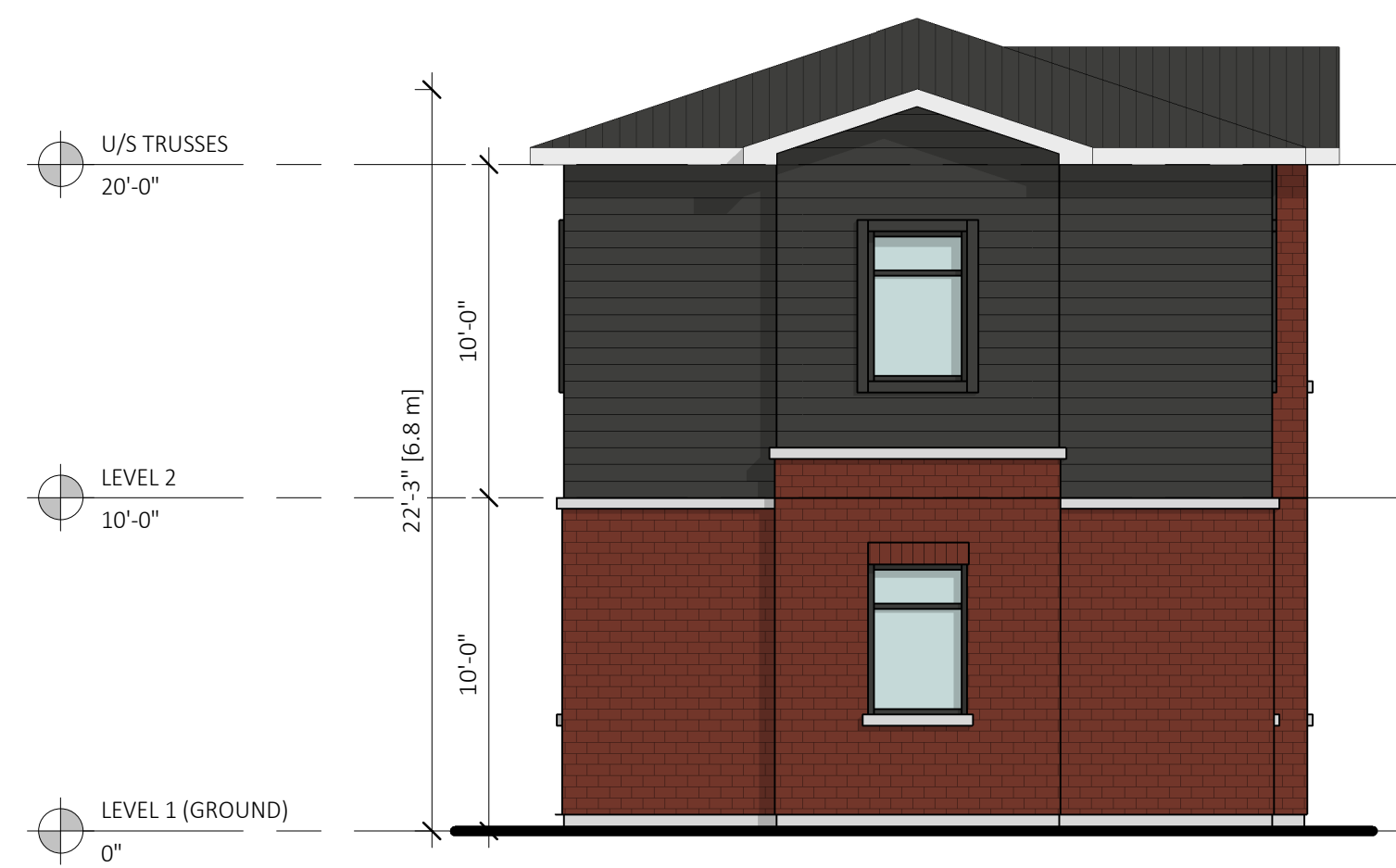
FLOOR PLANS

No.	Date	Issued/Revision	PROJ. NO.	SBM-xx-xxxx	DRAWING NO.
1	2024.12.19	ISSUED FOR CLIENT REVIEW	SCALE	AS NOTED	A100
2	2025.01.22	ISSUED FOR CLIENT REVIEW	DATE	12/18/24	
			DRAWN	Author	
			DESIGNED	Designer	
			CHECKED	Checker	REVISION NO. 2



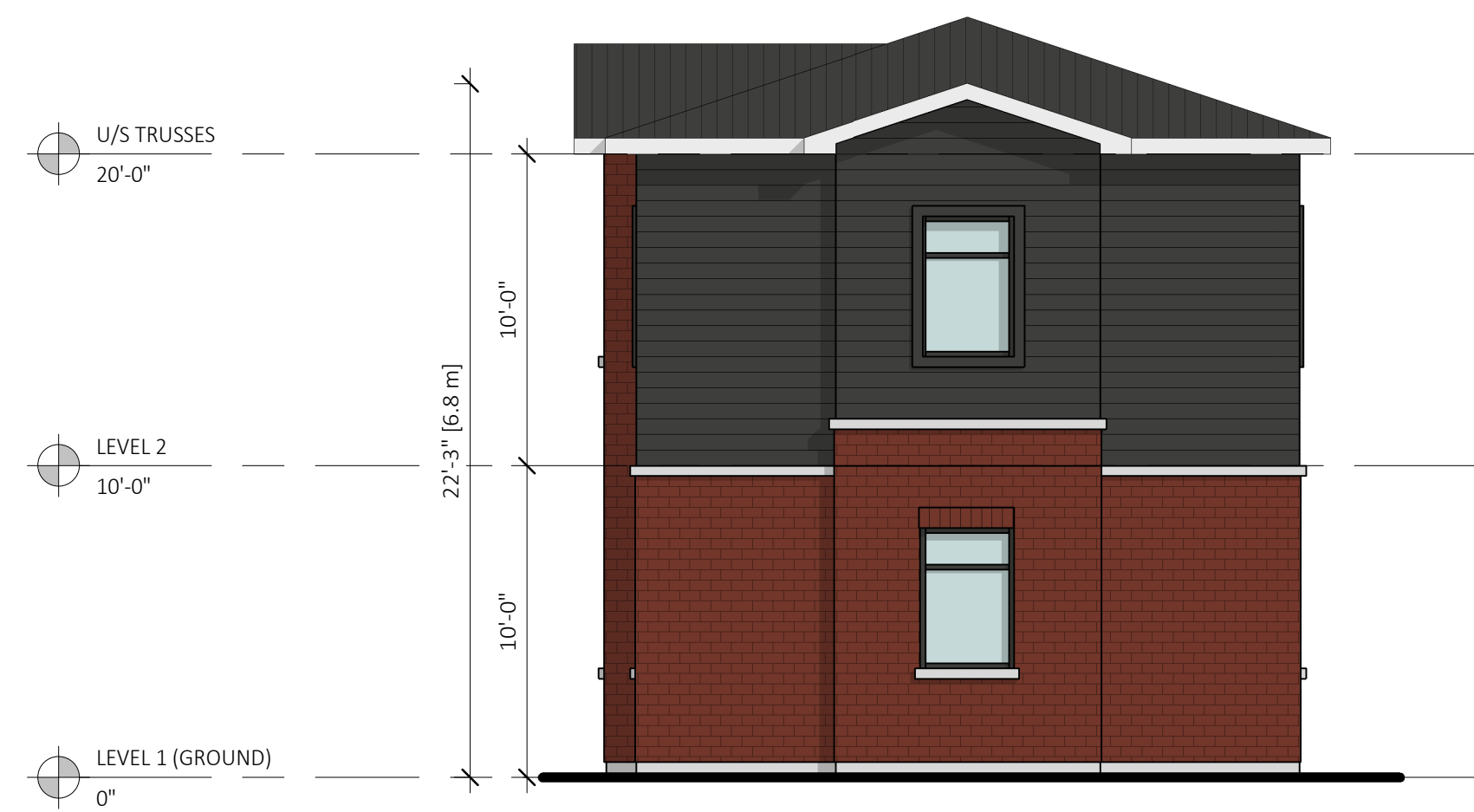
NORTH ELEVATION

SCALE: 3/16" = 1'-0"



EAST ELEVATION

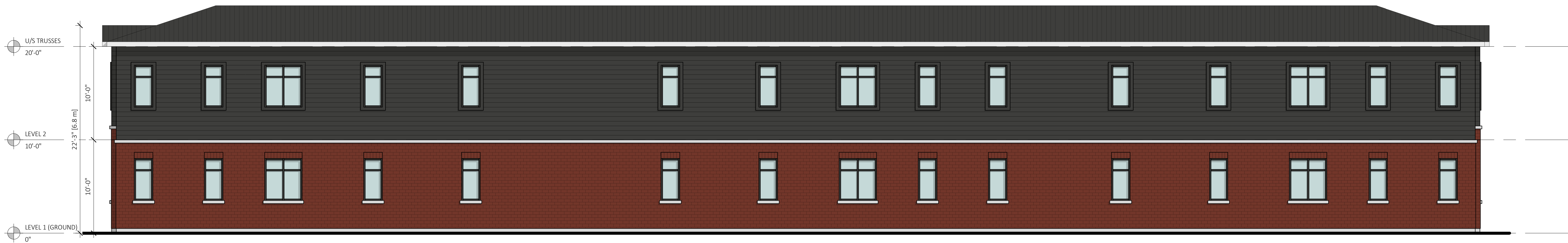
SCALE: 3/16" = 1'-0"



WEST ELEVATION (HEAD ST)

SCALE: 3/16" = 1'-0"

MATERIAL LEGEND			
TAG	DESCRIPTION	COLOUR	HATCH
F1	PRE-FINISHED METAL CAP FLASHING	TO MATCH ADJACENT MATERIAL	
BR1	BRICK VENEER (BRAMPTON MODULAR BRICK CROSSROADS SERIES OR APPROVED EQUAL)	BLACK	
SD1	HORIZONTAL FIBER CEMENT LAP SIDING (JAMES HARDIE BOARD OR APPROVED EQUAL)	CEDARMILL PLANK: IRON GREY (OR EQUAL)	
PP1	EXPOSED CONCRETE FOUNDATION (FINISH SMOOTH)	GREY	



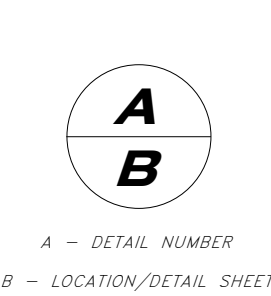
SOUTH ELEVATION

SCALE: 3/16" = 1'-0"

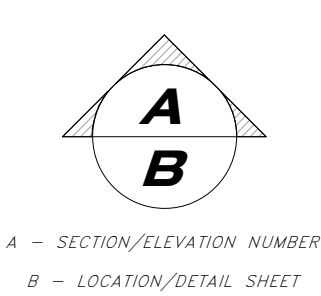
GENERAL NOTES

- IT IS THE RESPONSIBILITY OF THE APPROPRIATE CONTRACTOR TO CHECK AND VERIFY ALL DIMENSIONS ON SITE AND REPORT TO STRIK BALDINELLI MONIZ LTD. & MUST BE RETURNED UPON COMPLETION OF THIS PROJECT.
- ALL CONTRACTORS MUST COMPLY WITH ALL PERTINENT BUILDING CODE REGULATIONS AND BYLAWS HAVING JURISDICTION.
- THIS DRAWING MUST NOT BE USED FOR CONSTRUCTION UNTIL IT HAS BEEN SIGNED BY STRIK BALDINELLI MONIZ LTD. AND A BUILDING PERMIT HAS BEEN ISSUED.
- CONSTRUCTION TO BE ACCORDING TO BEST COMMON PRACTICE.
- DO NOT SCALE DRAWINGS, WHEN REQUIRED REQUEST WRITTEN VERIFICATION OF DIMENSIONS WITH STRIK BALDINELLI MONIZ LTD.
- ALL DRAWINGS & SPECIFICATIONS ARE THE PROPERTY OF STRIK BALDINELLI MONIZ LTD. & MUST BE RETURNED UPON COMPLETION OF THIS PROJECT.
- THIS DRAWING & ALL DETAILS ARE FOR THIS PROJECT ONLY AND SHOULD NOT BE USED FOR ANY OTHER WORK.
- CONTRACTOR IS FULLY RESPONSIBLE FOR MATTERS AFFECTING CONSTRUCTION.
- ANY MATERIAL ALTERATIONS CARRIED OUT DURING CONSTRUCTION BY THE CONTRACTOR OR ASSOCIATED SUB-CONTRACTOR SHALL BE CONFIRMED WITH THE ENGINEER PRIOR TO INSTALL FAILURE TO DO SO RESULTS IN FULL CONTRACTOR RESPONSIBILITY FOR SYSTEMS EFFECTED.

DETAIL SYMBOL



ELEVATION SYMBOL



STRIK BALDINELLI MONIZ
 PLANNING • CIVIL • STRUCTURAL • MECHANICAL • ELECTRICAL
 1599 Adelaide St. N. Unit 301, London Ontario, N5X 4E8
 Tel: (519) 471-6667 Fax: (519) 471-0034
 Email: sbm@sbmild.ca

PRELIMINARY FOR REVIEW ONLY

ENGINEER'S STAMP

PROJECT/CLIENT:
BAKKER DESIGN & BUILD STACKED TOWNHOUSE (6 UNITS)
25 HEAD ST. N. STRATHROY ON

DRAWING TITLE:
ELEVATIONS

No.	Date	Issued/Revision	PROJ. NO.	SBM-xx-xxxx	DRAWING NO.
1	2024.12.19	ISSUED FOR CLIENT REVIEW	SCALE	AS NOTED	A400
2	2025.01.22	ISSUED FOR CLIENT REVIEW	DATE	12/18/24	
			DRAWN	Author	
			DESIGNED	Designer	
			CHECKED	Checker	REVISION NO. 2