



<b>REPORT TO:</b>	Planning and Priorities Advisory Committee
	Public or In-Camera (for Board Meetings only): Public
<b>TITLE OF REPORT:</b>	Adelaide Metcalfe and Strathroy-Caradoc Elementary Panel Attendance Area Review: Final Attendance Area Review Report
<b>PRESENTERS:</b> <i>(list ONLY those attending the meeting)</i>	Geoff Vogt, Superintendent of Facility Services and Capital Planning Ben Puzanov, Manager of Planning Cassandra Harms, Planner
<b>REPORT AUTHORS:</b>	Ben Puzanov, Manager of Planning Cassandra Harms, Planner Karla Peña-Mendez, Data and Visualization Specialist Kendra Cervinka, Junior Planning Analyst
<b>PRESENTED FOR:</b>	Approval
<b>Recommendations:</b> <i>(only required when presented for approval)</i>	<p>THAT the attendance areas for Caradoc North PS, Mary Wright PS, North Meadows PS, Adelaide-W.G. MacDonald PS, and the new Strathroy elementary school as shown in Appendix A to the April 8, 2025 report titled “Adelaide Metcalfe and Strathroy-Caradoc Elementary Panel Attendance Area Review: Final Attendance Area Review Report” be approved and that this take effect September 2026 and once a new school in Strathroy opens, per the phasing in Appendix A; and</p> <p>THAT students who will be in Grade 8 in the year of implementation of each phase of the attendance area changes and their siblings be provided with the “legacy agreement option” to remain at their current school, with transportation (if eligible), for the duration of the school year of implementation.</p>
<b>Purpose:</b> <i>(include context)</i>	<p>The purpose of this report is to provide the final recommendations for the Adelaide Metcalfe and Strathroy-Caradoc Elementary Panel Attendance Area Review.</p> <p>The Final Attendance Area Review Report is included in Appendix B.</p>
<b>Content:</b>	<p><b>Background</b></p> <p>Strathroy-Caradoc has experienced increasing enrolment over the past several years due to the existing and planned housing developments in the community.</p> <p>The goals of this review were to:</p> <ul style="list-style-type: none"><li>- Manage current and projected enrolment to reduce reliance on portables and continue offering students exceptional learning environments;</li></ul>

- Reduce reliance on school bus transportation by designating students to their most proximal school;
- Reduce overall empty pupil places; and
- Better position TVDSB to pursue Capital Priorities Program funding from the Ministry of Education for a new elementary school in Strathroy.

This review considers two potential attendance area changes, both in phases, as well as establishing an attendance area for a future new Strathroy elementary school. The recommended Phase 1: Option 1 would designate a portion of the Caradoc North PS attendance area to Mary Wright PS. The recommended option in Phase 2 (Option 1) would designate a portion of the Mary Wright PS attendance area to North Meadows PS. It is recommended that Phases 1 and 2 be implemented in September 2026. Phase 3 establishes the future attendance area for a new elementary school and would be implemented once the new school receives funding from the Ministry of Education and opens.

### **Community Feedback**

An Attendance Area Review Committee meeting for this review was held on November 25, 2024. The Attendance Area Review Committee is comprised of parent and caregiver volunteers from the school communities involved in this review. After the meeting, each subcommittee held their own school meetings to gather feedback that was used to prepare school-level reports to inform the final recommendations for this review.

The following key themes were included in the subcommittee reports:

- Concerns related to students changing schools and how it would impact their wellbeing following the COVID-19 pandemic;
- Changes in recent development and migration trends, which could impact future enrolment;
- Concerns related to the availability of extra-curricular activities and programming if the number of students decreases at specific schools as a result of this review; and
- Recommendations for various legacy agreements for current students and their siblings.

Administration's response to subcommittee comments is summarized here, with additional details provided in Appendix B:

- TVDSB's priority is to provide the best learning environments for all students across the district. Balancing enrolment across schools is an essential part of this commitment and is also required to obtain funding from the Ministry of Education for new schools and additions to support community growth;

- Housing development has slowed over the past two years but municipal staff have confirmed that projects are still expected to move forward, albeit at a slower pace; and
- Fulsome programming options will still be available at all schools involved in the review as the recommended options were formulated to ensure schools will remain well-utilized but avoid the use of portables where possible.

Administration works with Municipal staff at Strathroy-Caradoc, Adelaide Metcalfe, and the County of Middlesex to track residential developments. This assists with projecting future school enrolments. Municipal staff have confirmed that the pace of development has slowed. Timing for a new Strathroy elementary school will depend on the pace of development activity and the resulting student enrolment growth.

As with all attendance area reviews, transition committees will be established to assist students and their families prior to implementation.

### **Summary of Recommendations**

Phase 1: A boundary change between Caradoc North PS and Mary Wright PS is being recommended to balance enrolment between the two schools and designate students to a more proximal school. It is recommended that the attendance areas of Caradoc North PS and Mary Wright PS be changed according to Appendix A and take effect in September 2026, and that legacy agreement options be offered to all students entering grade eight when the changes take effect, and their siblings, for the first year of implementation only, with transportation (if eligible).

Phase 2: A boundary change is recommended between Mary Wright PS and North Meadows PS to balance enrolment at the same time as the Phase 1 changes and prepare for a future new elementary school in Strathroy. It is recommended that the attendance areas for Mary Wright PS and North Meadows PS be changed according to Appendix A and take effect in September 2026 and that legacy agreement options be offered to all students entering grade eight when the changes take effect, and their siblings, for the first year of implementation only, with transportation (if eligible).

Phase 3: It is recommended that a new attendance area be established for a future new elementary school in Strathroy. The new attendance area would impact Adelaide-W.G. MacDonald PS, North Meadows PS, and Mary Wright PS. It is recommended that attendance areas for these schools be changed according to Appendix A and take effect at the time of opening of the new elementary school, and that legacy agreement options be offered to

	all students entering grade eight when the changes take effect, and their siblings, for the first year of implementation only, with transportation (if eligible).
<b>Financial Implications:</b>	<p>The recommended boundary changes in Phases 1 and 2 would result in fewer students being eligible for transportation. If all students who are eligible for transportation currently register for the bus to their current school or the school they would be designated to in Phases 1 or 2, an additional bus would be required.</p> <p>There would be additional busing costs incurred to offer grade 8 students and their siblings a legacy agreement option for one year, with transportation (if eligible). While there would be no additional vehicles required, there would be added costs for time and kilometres traveled. These costs won't be known until legacy agreement options are exercised and routes are plotted. As an alternative, trustees may wish to offer legacy agreement options for one year to grade 8 students and their siblings without transportation.</p>
<b>Timeline:</b>	<p>The Final Attendance Area Review Report will be presented to the Planning and Priorities Advisory Committee meeting on April 8, 2025. Public delegations are scheduled to be received at the May 13, 2025 Planning and Priorities Advisory Committee meeting.</p> <p>The Board of Trustees is scheduled to deliberate and make a decision regarding the Final Attendance Area Review Report on May 27, 2025.</p>
<b>Communications:</b>	The Final Attendance Area Review Report as well as the process for requesting public delegation status to address the Board of Trustees regarding the recommendations will be circulated to the attendance area review committee as well as all the school communities involved in the review.
<b>Appendices:</b>	<p><u>Appendix A:</u> Recommended Attendance Areas</p> <p><u>Appendix B:</u> Adelaide Metcalfe and Strathroy-Caradoc Elementary Panel Attendance Area Review: Final Attendance Area Review Report</p> <p><u>Appendix C:</u> School Subcommittee Reports</p>

---

### **Connection to Strategic Directions:**

We value students' individual educational paths and provide the tools and resources necessary for student achievement including students with special education needs: No

To support student achievement, our schools and workplaces must be safe spaces for all: Yes

Our goal is to become Ontario's leader in education by fostering a culture of innovation and excellence: No

To inform our decision-making, we will build positive, trusting relationships across our district by increasing community engagement that is accessible, accountable, and transparent: Yes

---





**Thames Valley**  
District School Board

# **Adelaide Metcalfe and Strathroy-Caradoc Attendance Area Review**

**April 8, 2025**



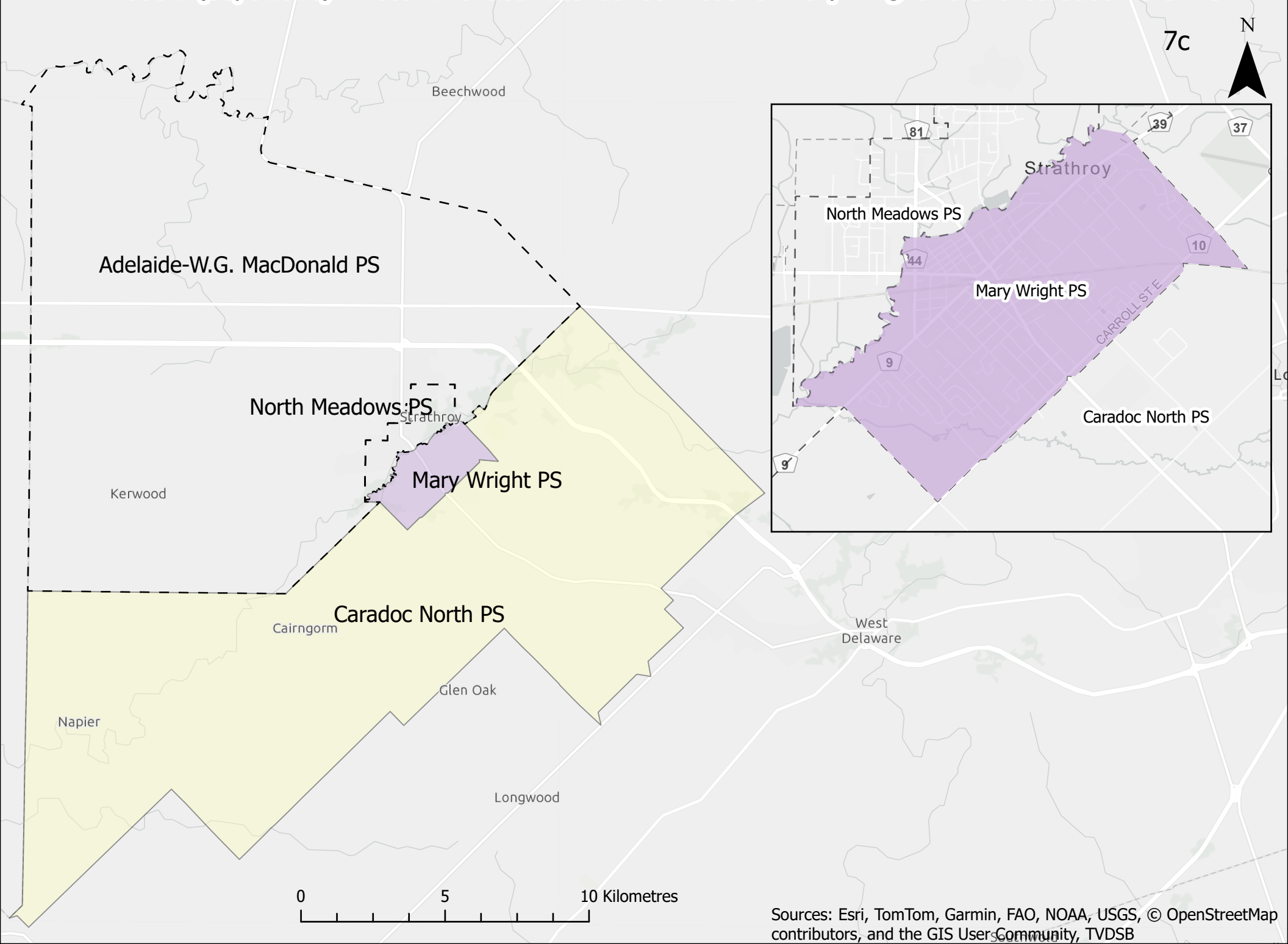
# Recommendations

THAT the attendance areas for Caradoc North PS, Mary Wright PS, North Meadows PS, Adelaide-W.G. MacDonald PS, and the new Strathroy elementary school as shown in Appendix A to the April 8, 2025 report titled “Adelaide Metcalfe and Strathroy-Caradoc Elementary Panel Attendance Area Review: Final Attendance Area Review Report” be approved and that this take effect September 2026 and once a new school in Strathroy opens, per the phasing in Appendix A; and

THAT students who will be in Grade 8 in the year of implementation of each phase of the attendance area changes and their siblings be provided with the “legacy agreement option” to remain at their current school, with transportation (if eligible), for the duration of the school year of implementation.

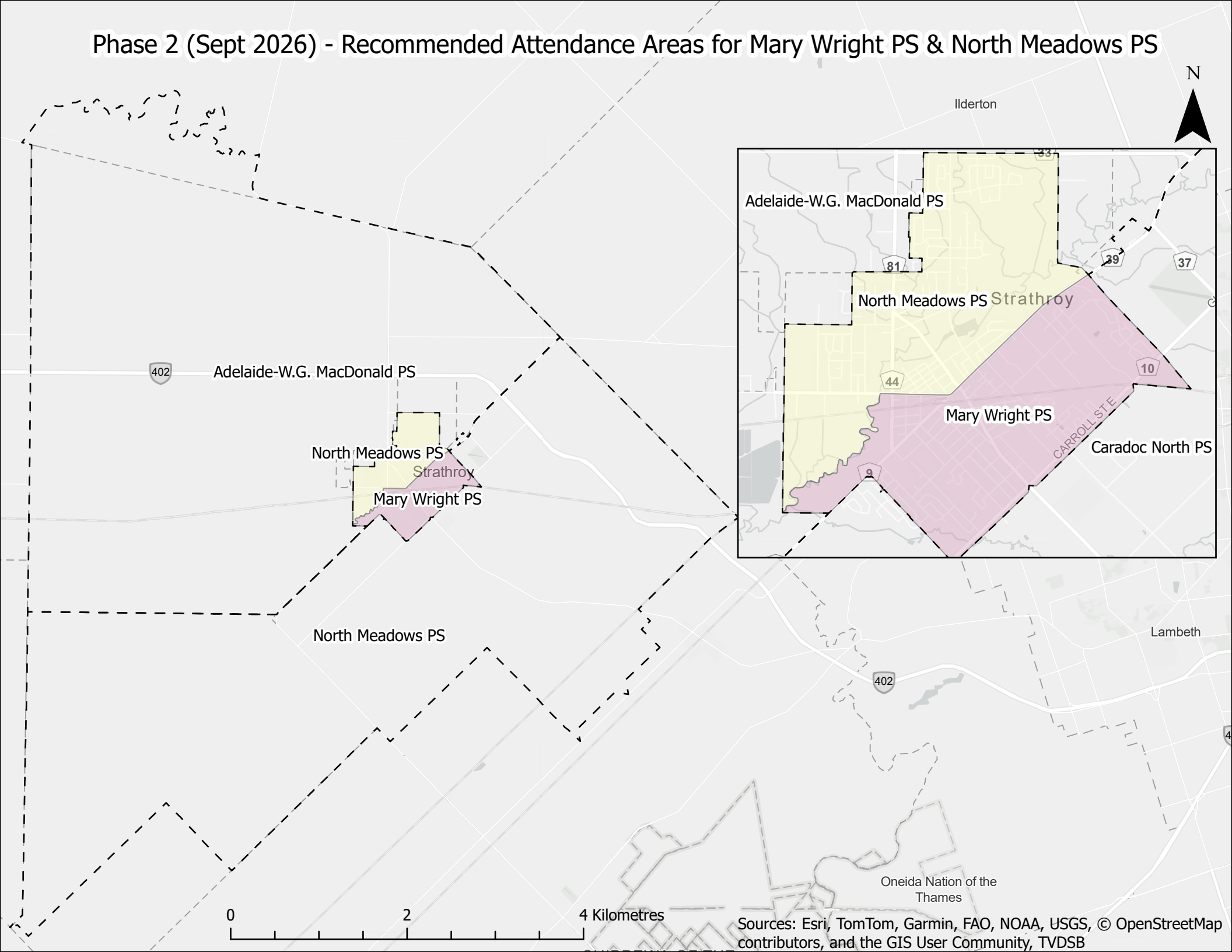


# Phase 1 (Sept 2026) - Recommended Attendance Areas for Mary Wright PS and Caradoc North PS





# Phase 2 (Sept 2026) - Recommended Attendance Areas for Mary Wright PS & North Meadows PS



Phase 3 (Future) – Recommended Attendance Areas for a Future New Strathroy Elementary School,  
Adelaide-W.G. MacDonald PS, Mary Wright PS & North Meadows PS

N



Recommended Future Strathroy PS Attendance Area

402

Strathroy

Adelaide-W.G. MacDonald PS

402

402

North Meadows PS

Strathroy

Mary Wright PS

402

Caradoc North PS

Mount Brydges

0 3 6 Kilometres

Sources: Esri, TomTom, Garmin, FAO, NOAA, USGS, © OpenStreetMap contributors, and the GIS User Community, TVDSB



# Thames Valley

## District School Board

Adelaide Metcalfe and Strathroy-Caradoc Elementary Panel Attendance Area Review  
Final Attendance Area Review Report

# Contents

Executive Summary.....	5
<b>1. Background .....</b>	<b>6</b>
<b>1.1 Analysis Parameters.....</b>	<b>6</b>
<b>1.2 Adelaide Metcalfe &amp; Strathroy-Caradoc Attendance Area Review – 2024 .....</b>	<b>7</b>
<b>2.0 Current Situation .....</b>	<b>7</b>
<b>2.1 Strathroy-Caradoc &amp; Adelaide Metcalfe Study Area .....</b>	<b>7</b>
<b>2.2 Issues Under Review .....</b>	<b>11</b>
<b>3.0 Current and Projected Residential Growth and Community Trends .....</b>	<b>12</b>
<b>3.1 Current and Projected Residential Development.....</b>	<b>12</b>
<b>3.2 North Meadows Secondary Plan Area.....</b>	<b>12</b>
<b>4.0 Proposed Attendance Area Changes.....</b>	<b>13</b>
<b>4.1 Phase 1: Relieving enrolment pressure at Caradoc North PS .....</b>	<b>13</b>
<b>4.1.1 Phase 1: Option 1 (Recommended) .....</b>	<b>13</b>
<b>4.1.1.1 Expected Outcomes .....</b>	<b>14</b>
<b>4.1.2 Phase 1: Option 2 .....</b>	<b>15</b>
<b>4.1.2.1 Expected Outcomes .....</b>	<b>16</b>
<b>4.2 Phase 2: Balance enrolment between Mary Wright PS and North Meadows PS .....</b>	<b>17</b>
<b>4.2.1 Phase 2: Option 1 (Recommended) .....</b>	<b>17</b>
<b>4.2.1.1 Expected Outcomes .....</b>	<b>18</b>
<b>4.2.2 Phase 2: Option 2 .....</b>	<b>19</b>
<b>4.2.2.1 Expected Outcomes .....</b>	<b>20</b>
<b>4.3 Phase 3: Creating an attendance area for a future Strathroy Elementary School .....</b>	<b>21</b>
<b>4.3.1 Phase 3 Recommendation .....</b>	<b>22</b>
<b>4.3.1.1 Expected Outcomes .....</b>	<b>23</b>
<b>5.0 Community Feedback.....</b>	<b>24</b>
<b>5.1 Key Theme: student movement and wellbeing.....</b>	<b>24</b>
<b>5.1.1 Addressing student movement concerns .....</b>	<b>24</b>
<b>5.2 Key Theme: changes in residential development trends .....</b>	<b>25</b>
<b>5.2.1 Addressing concerns related to changes in residential development trends .....</b>	<b>25</b>
<b>5.3 Key Theme: Programming and extra-curricular availability .....</b>	<b>25</b>
<b>5.3.1 Addressing programming concerns .....</b>	<b>25</b>
<b>5.4 Key recommendation: provide legacy agreements for existing Caradoc North PS students.....</b>	<b>25</b>

5.4.1 Addressing the recommendation to provide legacy agreements for existing students .....	26
5.5 Key recommendation: alternatively, allow existing Caradoc North PS students legacy agreements without transportation .....	26
5.5.1 Addressing the recommendation to provide legacy agreements without transportation.....	26
6.0 Recommended Changes .....	26
6.1 Phase 1: Caradoc North Public School and Mary Wright Public School .....	26
6.1.1 Expected Outcomes.....	27
6.2 Phase 2: Mary Wright Public School and North Meadows Public School .....	27
6.2.1 Expected Outcomes.....	28
6.3 Phase 3: Attendance Area for Future New Strathroy Elementary School .....	28
6.3.1 Expected Outcomes.....	29
7.0 References .....	30

## List of Figures

Figure 1: 2023-24 Utilization Rates by School

Figure 2: Geographic Distribution of Students Within Study Area

Figure 3: Phase 1 Option 1

Figure 4: Phase 1 Option 2

Figure 5: Phase 2 Option 1

Figure 6: Phase 2 Option 2

Figure 7: Phase 3

Figure 8: Phase 1 (September 2026) – Recommended Attendance Areas for Mary Wright PS & Caradoc North PS

Figure 9: Phase 2 (September 2026) – Recommended Attendance Areas for North Meadows PS & Mary Wright PS

Figure 10: Phase 3 (Future) – Recommended Attendance Areas for Future New Strathroy Elementary School, Adelaide-W.G. MacDonald PS, Mary Wright PS & North Meadows PS

## Executive Summary

This report provides an overview of current and projected enrolment at elementary schools in Strathroy-Caradoc and Adelaide Metcalfe: Caradoc PS, Caradoc North PS, Mary Wright PS, North Meadows PS, and Adelaide-W.G. MacDonald PS. The recommendations contained in this report aim to relieve enrolment pressure in the short-term while also helping to better position the Thames Valley District School Board to receive Capital Priorities Program funding for a new elementary school in Strathroy in the long-term. This report is not intended to be a stand-alone document and should be referenced in conjunction with other Board strategies, policies, and objectives.

The primary goals of this study are to consider short and long-term enrolment and space needs in Strathroy-Caradoc, relieve enrolment pressure at a facility that was not designed for a large student population, and better utilize space at the subject schools to effectively demonstrate a need for additional future capital investment from the Ministry of Education. The background analysis for this review included a broader study of current and projected enrolment across Middlesex County, current student distribution, as well as active and planned housing development.

Given the scope of this review, the recommended changes are broken into three phases. These boundary adjustments not only contemplate optimization of current learning environments for students but also plan for projected housing development and its role in supporting a future new elementary school in Strathroy. The potential boundary changes were formulated with consideration to natural geographic features and proximity to nearby schools.

Strathroy-Caradoc has experienced increasing enrolment over the past several years primarily due to housing development and expansions to the settlement area of Strathroy. Existing attendance areas do not take into account some of these settlement expansion areas, with many students residing in Strathroy attending schools outside of the community. Additionally, based on long-term enrolment and housing projections, Strathroy will need an additional elementary school to accommodate students resulting from increased housing. Embarking on this review well in advance of this need allows TVDSB to begin submitting a business case to the Ministry of Education for Capital Priorities Funding to secure a new school as early as possible.

Feedback from participating school communities is included and addressed in the final section of this report.

# 1. Background

TVDSB is a large district that covers many growing communities in southwestern Ontario. Many municipalities in Middlesex County continue to grow; with increased migration from the Greater Toronto Area, several communities have expanded significantly. Strathroy-Caradoc is experiencing notable growth, with a 14 percent increase in population between the 2016 and 2021 census periods (Statistics Canada, 2023). Since the previous boundary analysis took place in this area, Strathroy has expanded its settlement boundary to make room for additional housing and amenities to support community growth; this has resulted in student population growth that is within Strathroy's settlement area boundary but outside of Strathroy elementary school attendance areas. Some of this growth is currently designated to attend Caradoc North PS, a small school located southeast of Strathroy, and Adelaide-W.G. MacDonald PS, a small school located northwest of Strathroy.

In addition to the housing development already underway, a large area of land in the northeast portion of town, known as the North Meadows Secondary Plan area, is awaiting development. The majority of these lands are identified for medium and low-density housing, per the municipality's Official Plan (Strathroy-Caradoc, 2024). Based on discussions with municipal staff, only a small portion of this secondary plan area has active applications for development at this time. TVDSB has also previously identified a potential school site within the secondary plan area.

## 1.1 Analysis Parameters

Attendance area reviews are implemented to balance enrolment and optimize the utilization of schools. In doing so, TVDSB is able to better position itself to receive capital funding from the Ministry of Education through the Capital Priorities Program, which funds new schools and additions for all school boards across the province. When existing facilities and resources are being used efficiently, it demonstrates to the Ministry that increasing enrolment requires new infrastructure to be accommodated properly.

When a school that was meant to serve a smaller community experiences persistent enrolment pressure, everyday operations at that school become difficult. This can include large class sizes, hosting classes in spaces that were not meant for full-time homerooms, and strains on private water and sanitary services on site.

With the growth being experienced in Middlesex County, the previously established attendance areas in Strathroy-Caradoc are no longer practical. Strathroy has continued to rapidly develop; however, Caradoc North PS remains on private services that are not equipped to handle the expected enrolment growth.



The tools available to the TVDSB to provide enrolment pressure relief at Caradoc North PS and better position the Board to request future funding for permanent accommodations in Strathroy include:

- Permanently accommodating students residing in Strathroy but attending Caradoc North PS at Mary Wright PS; and
- The modification of attendance areas to balance enrolment between the Strathroy schools under review.

The schools involved in this review with recommended changes are as follows:

- Caradoc North PS
- Mary Wright PS
- North Meadows PS
- Adelaide-W.G. MacDonald PS

Boundary adjustments for Caradoc PS were investigated as part of this review. However, given the student distribution of students within this attendance area, an expansion of the school will instead be pursued through a business case to the Ministry of Education in order to accommodate students in Mount Brydges.

## **1.2 Adelaide Metcalfe & Strathroy-Caradoc Attendance Area Review – 2024**

The purpose of this report is to highlight the technical aspects of the current enrolment imbalances between the subject schools as well as the operational challenges faced at Caradoc North PS. The potential boundary change provides a solution to better accommodate the growing Strathroy community while the TVDSB seeks additional funding from the Ministry of Education for a future new Strathroy elementary school for the growing student population.

## **2.0 Current Situation**

### **2.1 Strathroy-Caradoc & Adelaide Metcalfe Study Area**

The purpose for undertaking an attendance area review in this area is the overutilization at Caradoc North Public School and ongoing growth in Strathroy. As a result of settlement boundary expansions, many students residing in Strathroy attend Caradoc North PS or Adelaide-W.G. MacDonald PS. Much of the current housing development in Strathroy is occurring along the Carroll Street corridor and along the western edge of the community, each of which are currently designated to the two schools outside of the settlement area.

Caradoc North PS is small facility with four portable classrooms already located on site. The site is serviced by a private septic system and well water, making accommodations for a large student population difficult. Adelaide-W.G. MacDonald PS is also a small facility located a fair distance away from any major settlement area. This school is also on private services and continues to receive most of its enrolment growth from Strathroy. Its current attendance area covers a large portion of the North Meadows Secondary Plan area.

The elementary schools in Strathroy are projected to continue experiencing an enrolment imbalance. Mary Wright PS, located in the south end of town, opened in 2013 and is located closest to most of the ongoing housing developments. This school is on full municipal services and located on a large site. The school is operating just under capacity and enrolment is projected to remain stable.

North Meadows PS is located in the north end of Strathroy. It covers a large portion of the built areas of Strathroy as well as the North Meadows Secondary Plan area. Enrolment at this school is projected to slightly decline until housing development begins in the secondary plan area. This school is on full municipal services and located on a large site. Once a significant portion of the North Meadows Secondary Plan area develops, the schools in Strathroy-Caradoc will not have sufficient space to accommodate all of the projected pupils.

As part of this review, Administration reviewed potential boundary adjustments for Adelaide-W.G. MacDonald PS and Caradoc PS. For Adelaide-W.G. MacDonald PS, small adjustments could be made to designate students who are attending the school but residing within the settlement area of Strathroy to a Strathroy school; however, doing so would significantly reduce enrolment at Adelaide-W.G. MacDonald PS.

A small portion of the attendance area for Adelaide-W.G. MacDonald PS would be included in the attendance area of the new school but this would not significantly impact the enrolment of this school.

Caradoc PS has a large attendance area but most of the student population is residing in Mount Brydges. Any significant boundary adjustments to relieve enrolment pressure will require that students be relocated from their community school and is therefore not practical. Administration does not recommend any changes to the attendance area through this review and instead will proceed with a Capital Priorities business case for a permanent addition at this school.

Figure 1 below shows the current utilization of the schools involved in this review as of October 2023.

**Figure 1: 2023-24 Utilization Rates by School**

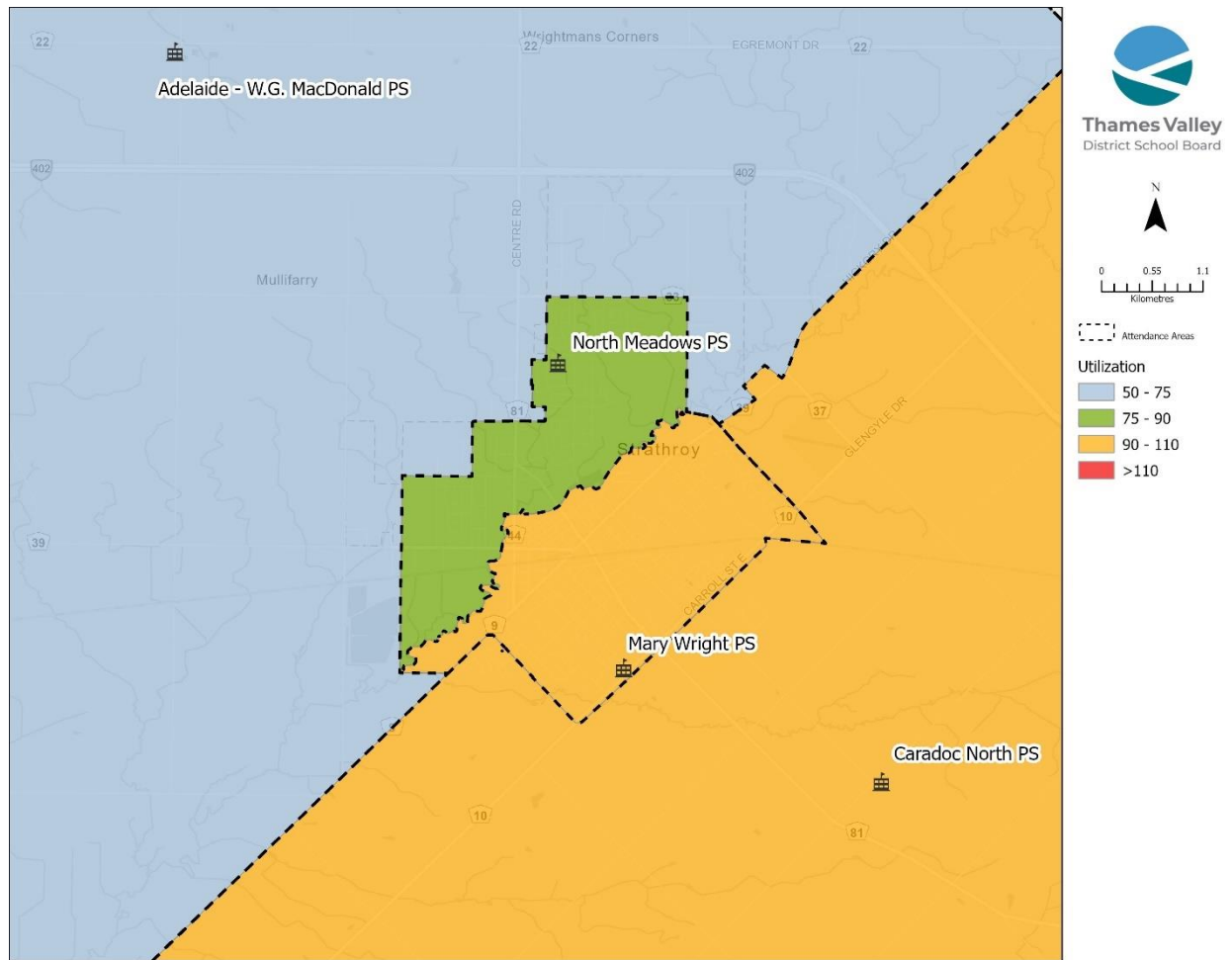
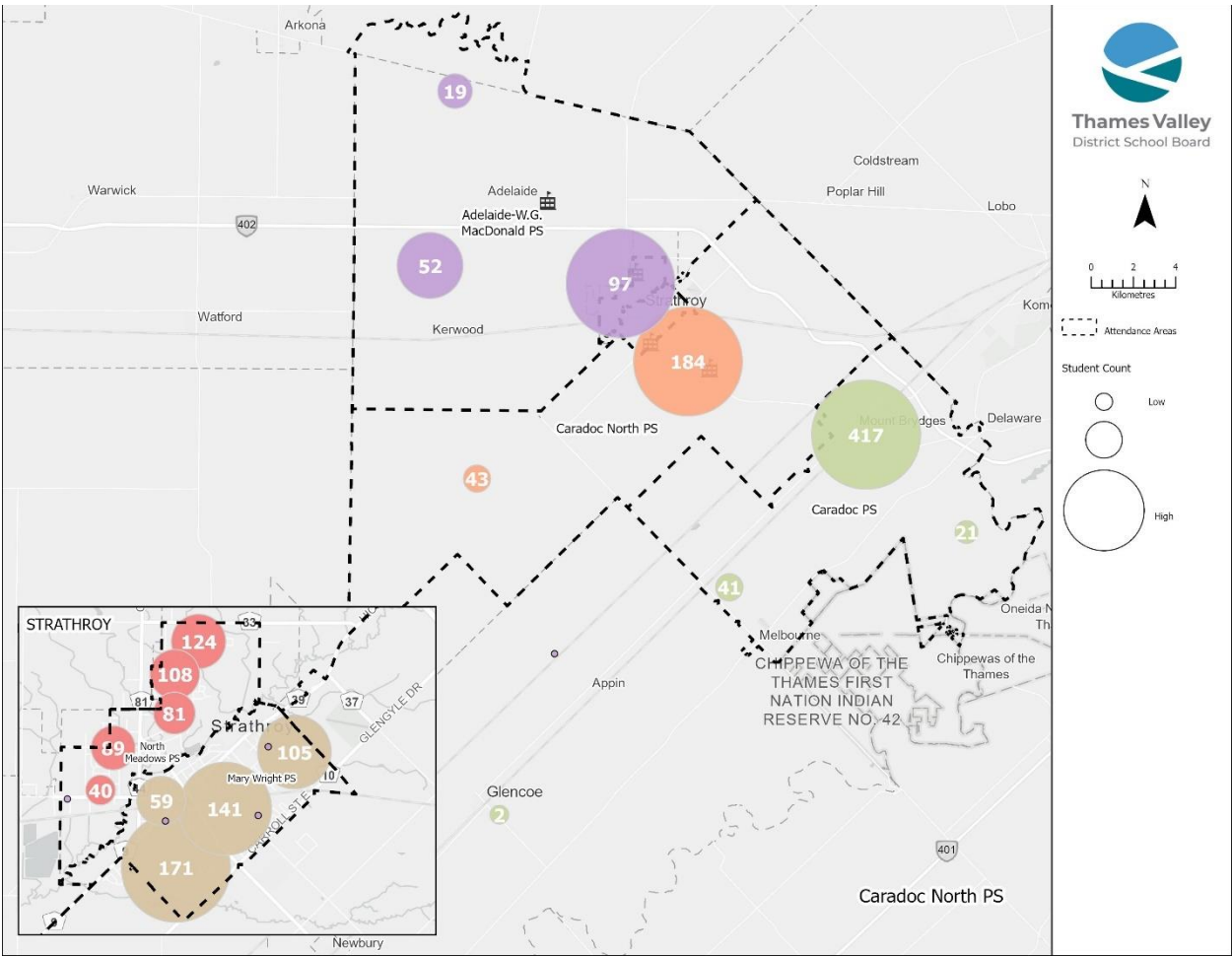


Figure 2 shows the distribution of students within the area of study. Most students are concentrated in Strathroy and Mount Brydges.

**Figure 2: Geographic Distribution of Students Within Study Area**



As part of this review, an out of boundary analysis was conducted to determine if enrolment pressure was resulting from students attending schools other than their designated home school. The following table shows the results of this analysis:

**Table 1: Out of Boundary Students**

<b>School</b>	<b>Current Enrolment (2023)</b>	<b>Number of Students Attending from Out of Boundary</b>	<b>Percentage of Total Student Population (%)</b>
Adelaide-W.G. MacDonald PS	177	4	2.3
Caradoc North PS	238	5	2.1
Caradoc PS	516	8	1.6
North Meadows PS	426	9	2.1
Mary Wright PS	502	11	2.2

Based on the information above, it has been determined that students attending from outside of each subject school's boundary are not making a significant impact on enrolment levels.

## **2.2 Issues Under Review**

Enrolment at Caradoc North PS is projected to continue increasing due to development taking place in the south end of Strathroy. The purpose of the review is to accommodate this growth while balancing enrolment across Strathroy elementary schools and preparing an attendance area for a potential new Strathroy elementary school. The potential options must balance the needs of current students with the long-term need for a new elementary school and the Ministry of Education requirements that must be met to achieve this.

Table 2 presents the current and projected utilization for the schools involved in this review if no intervention is undertaken. As shown in the table, Caradoc North PS will continue to grow, operating over capacity, as the larger schools in Strathroy remain stable and operate below their capacities.

**Table 2: Status Quo Projected Utilization**

	Capacity	Portables			Enrolment			Utilization		
School	OTG	2023	2026	2031	2023	2026	2031	2023	2026	2031
Caradoc North PS	216	4	6	6	238	278	277	110%	129%	128%
Mary Wright PS	534	0	0	0	502	487	492	94%	91%	92%
North Meadows PS	518	0	0	0	426	424	468	82%	82%	90%
Caradoc PS	424	6	8	10	516	573	628	122%	135%	148%
Adelaide-W.G. MacDonald PS	256	0	0	0	177	179	248	69%	70%	97%

## 3.0 Current and Projected Residential Growth and Community Trends

### 3.1 Current and Projected Residential Development

There is significant growth taking place across Middlesex County, including in the municipality of Strathroy-Caradoc. As part of the recently approved Middlesex County Official Plan Update, population and housing projections were completed to help guide development in the county until 2046. Even in a low growth scenario, the municipality of Strathroy-Caradoc population is projected to grow from 23,300 in 2021 to 26,800 by 2036 (Middlesex County, 2021). As a result, total households are projected to increase from approximately 9,000 to 11,230 in the same time frame (Middlesex County, 2021).

The municipality of Strathroy-Caradoc has also recently updated its local official plan, with an objective to diversify the types of housing available to current and future residents. Currently, there are over 15 active residential development sites in Strathroy-Caradoc that will continue to contribute to growth at area schools, in addition to the large North Meadows Secondary Plan area.

### 3.2 North Meadows Secondary Plan Area

This development area will necessitate a new elementary school in Strathroy, with several hundred units expected as a result of increased unit types and density targets set out by the

municipality and the province. Currently, only a small portion of the secondary plan area has active development applications.

## **4.0 Proposed Attendance Area Changes**

The following section outlines the potential attendance area changes between the subject schools. Given the interconnected nature of the changes, the options have been phased:

- Phase 1: Relieving enrolment pressure at Caradoc North PS
- Phase 2: Balancing enrolment between Mary Wright PS and North Meadows PS
- Phase 3: Prepare for a future New Strathroy Elementary School

These boundary adjustments were developed based on the need to provide relief at Caradoc North PS and balance enrolment across Strathroy in a logical manner that follows geographic boundaries, all while preparing for a new elementary school in Strathroy.

Enrolment figures used in the following options reflect the projected number of students in September 2026, the first year of implementation.

### **4.1 Phase 1: Relieving enrolment pressure at Caradoc North PS**

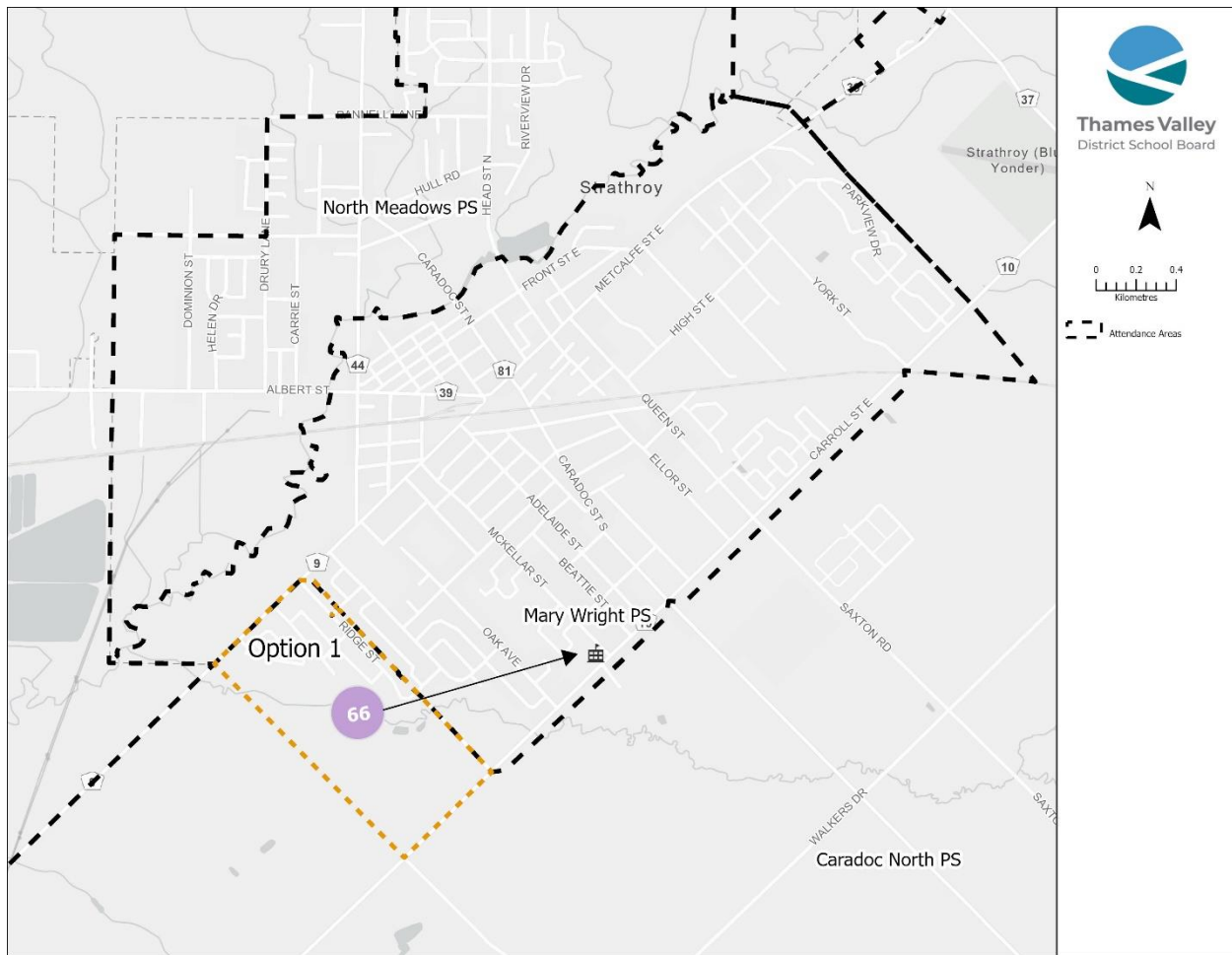
Caradoc North PS is experiencing enrolment growth coming from greenfield development in Strathroy. Given the lack of municipal servicing, Caradoc North PS cannot accommodate the growth projected for the school. Based on a student distribution analysis, the growth at the school is concentrated close to the Mary Wright PS attendance area.

#### **4.1.1 Phase 1: Option 1 (Recommended)**

In this option, a portion of the Caradoc North PS attendance area be designated to Mary Wright PS. The subject portion will contain approximately 66 students in 2026. Doing so will reduce enrolment pressure and portable requirements at Caradoc North PS in the long term and allow students who live within Strathroy to attend a more proximal school. This option also ensures that programming at Caradoc North PS continues to remain robust.

Figure 3 illustrates the recommended change in orange. Please note that Phase 1: Option 1 only includes the smaller portion containing 66 students.

**Figure 3: Phase 1 Option 1**



Moving From	Students (26/27)	Receiving School
Caradoc North PS	66	Mary Wright PS

#### 4.1.1.1 Expected Outcomes

The expected outcomes of this option are that Caradoc North PS enrolment will be reduced to a more manageable level, while enrolment at Mary Wright PS will increase to just above capacity. To reduce portable usage at Mary Wright PS as a result of this change, additional measures will be discussed in Phase 2.

The table below shows the expected change in enrolment in this option.



**Table 3: Phase 1 Option 1 Projected Enrolment**

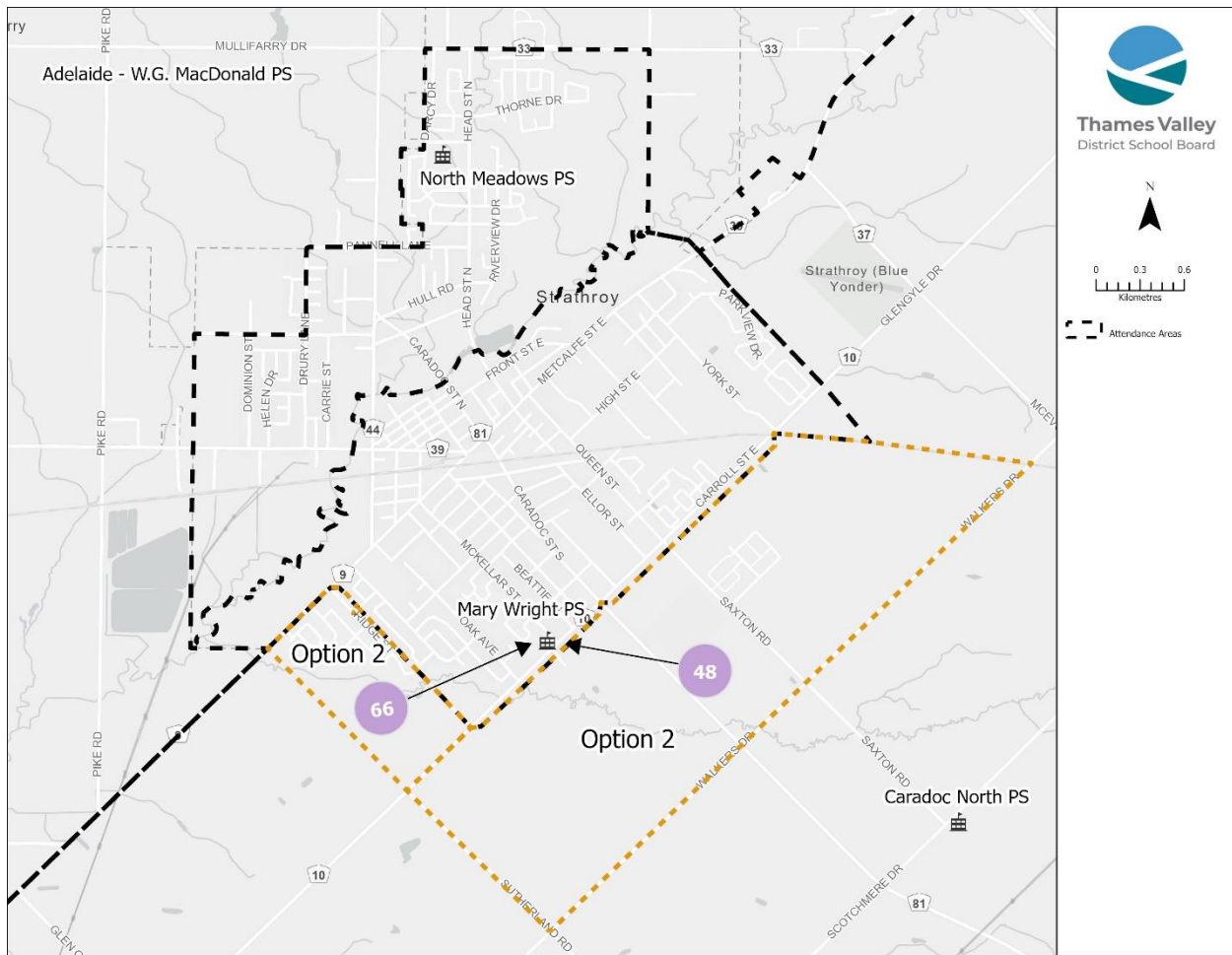
	Capacity	Portables			Enrolment			Utilization		
School	OTG	2023	2026	2031	2023	2026	2031	2023	2026	2031
Caradoc North PS	216	4	0	0	238	213	214	110%	99%	99%
Mary Wright PS	534	0	2	2	502	552	554	94%	103%	104%

**4.1.2 Phase 1: Option 2**

As part of this review, a second option was prepared for Phase 1. This option builds on Option 1 and designates an additional 48 students south of Carroll Street to Mary Wright PS. Mary Wright PS has site capacity to support these additional students. However, this would impact utilization more significantly at Caradoc North PS. This option was formulated to provide an opportunity for the community to provide feedback on moving all students currently attending Caradoc North PS and residing in the settlement area of Strathroy to Mary Wright PS.

Figure 4 illustrates the potential change in orange. Please note that Phase 1: Option 2 includes both orange portions on the map below.

**Figure 4: Phase 1 Option 2**



Moving From	Students (26/27)	Receiving School
Caradoc North PS	66 + 48	Mary Wright PS

#### 4.1.2.1 Expected Outcomes

The expected outcomes of this option are that Mary Wright PS will experience increased utilization, while utilization at Caradoc North PS will decrease more significantly.

The table below shows the expected change in enrolment if this option were to be approved.

**Table 4: Phase 1 Option 2 Projected Enrolment**

School	Capacity	Portables			Enrolment			Utilization		
	OTG	2023	2026	2031	2023	2026	2031	2023	2026	2031
<b>Caradoc North PS</b>	216	4	0	0	238	165	166	110%	76%	77%
<b>Mary Wright PS</b>	534	0	4	4	502	600	602	94%	112%	113%

#### 4.2 Phase 2: Balance enrolment between Mary Wright PS and North Meadows PS

As a result of relieving enrolment pressure at Caradoc North PS, space will need to be created at Mary Wright PS. To do this, enrolment can be balanced between Mary Wright PS and North Meadows PS. Boosting enrolment as close to 100 percent utilization at all area schools will be important when demonstrating the need for additional funding from the Ministry of Education, as well as optimizing available programming space at both schools.

##### 4.2.1 Phase 2: Option 1 (Recommended)

In this option, a small portion of the Mary Wright PS attendance area would be designated to North Meadows PS. This option would only affect approximately 29 students residing between the Thames River and Metcalfe Street.

Figure 5 below illustrates the recommended change in green.

Figure 5: Phase 2 Option 1



Moving From	Students (26/27)	Receiving School
Mary Wright PS	29	North Meadows PS

#### 4.2.1.1 Expected Outcomes

If this option was approved, enrolment would be balanced between Mary Wright PS and North Meadows PS, but both schools will likely require portables to support any growth that takes place until the new Strathroy elementary school is approved.

The table below shows the expected change in enrolment if this option was approved. Enrolment figures build upon Phase 1: Option 1.

**Table 5: Phase 2 Option 1 Projected Enrolment**

	Capacity	Portables			Enrolment			Utilization		
School	OTG	2023	2026	2031	2023	2026	2031	2023	2026	2031
Mary Wright PS	534	0	0	0	502	524	530	94%	98%	99%
North Meadows PS	518	0	0	0	426	452	493	82%	87%	95%

**4.2.2 Phase 2: Option 2**

In Option 2, a larger portion of the Mary Wright PS attendance area is designated to North Meadows PS. This area is between the Thames River and the rail corridor and will contain approximately 143 students at the recommended time of implementation.

Figure 6 illustrates the potential change in green.

Figure 6: Phase 2 Option 2



Moving From	Students (26/27)	Receiving School
Mary Wright PS	143	North Meadows PS

4.2.2.1 Expected Outcomes

If the option to designate approximately 143 Mary Wright PS students to North Meadows PS proceeds, utilization at Mary Wright PS will decrease to approximately 80 percent in the long term, leaving space for any new infill development that may occur in the attendance area. The utilization at North Meadows PS will increase to over 100 percent, but the site will be able to accommodate the additional students.

The table below shows the expected change in enrolment if this option was approved. Enrolment figures build on Phase 1: Option 1.

**Table 6: Phase 2 Option 2 Projected Enrolment**

	Capacity	Portables			Enrolment			Utilization		
School	OTG	2023	2026	2031	2023	2026	2031	2023	2026	2031
Mary Wright PS	534	0	0	0	502	410	429	94%	77%	80%
North Meadows PS	518	0	2	3	426	566	593	82%	109%	114%

#### 4.3 Phase 3: Creating an attendance area for a future Strathroy Elementary School

The North Meadows Secondary Plan area in Strathroy is expected to generate many new housing units contribute to enrolment growth in the community. An addition at an existing Strathroy school will not be sufficient to support the projected student population without the use of portables. TVDSB plans to submit a Capital Priorities business case to the Ministry of Education to secure funding for a new elementary school in Strathroy in the long-term. To build a case that the Ministry will support, TVDSB needs to first demonstrate that existing schools are being used efficiently; meaning that all proximal facilities must be operating close to or over 100 percent utilization within five years of a new school opening.

It is important to note that the following recommendation builds upon Phase 1: Option 1 and Phase 2: Option 1. This phase would come into effect upon the opening of the new school.

#### **4.3.1 Phase 3 Recommendation**

This recommendation proposes that an attendance area be created around the North Meadows Secondary Plan area, the Strathroy settlement boundary north of Second Street, and a portion of the Mary Wright PS attendance area located between Metcalfe Street and the rail corridor. A portion of the current North Meadows PS attendance area would be designated to the new school once it opens. In this scenario, a new school with approximately 430 pupil places could be supported in the long-term and open as early as 2031. This could be accelerated depending on the pace and density of development in the North Meadows Secondary Plan area.

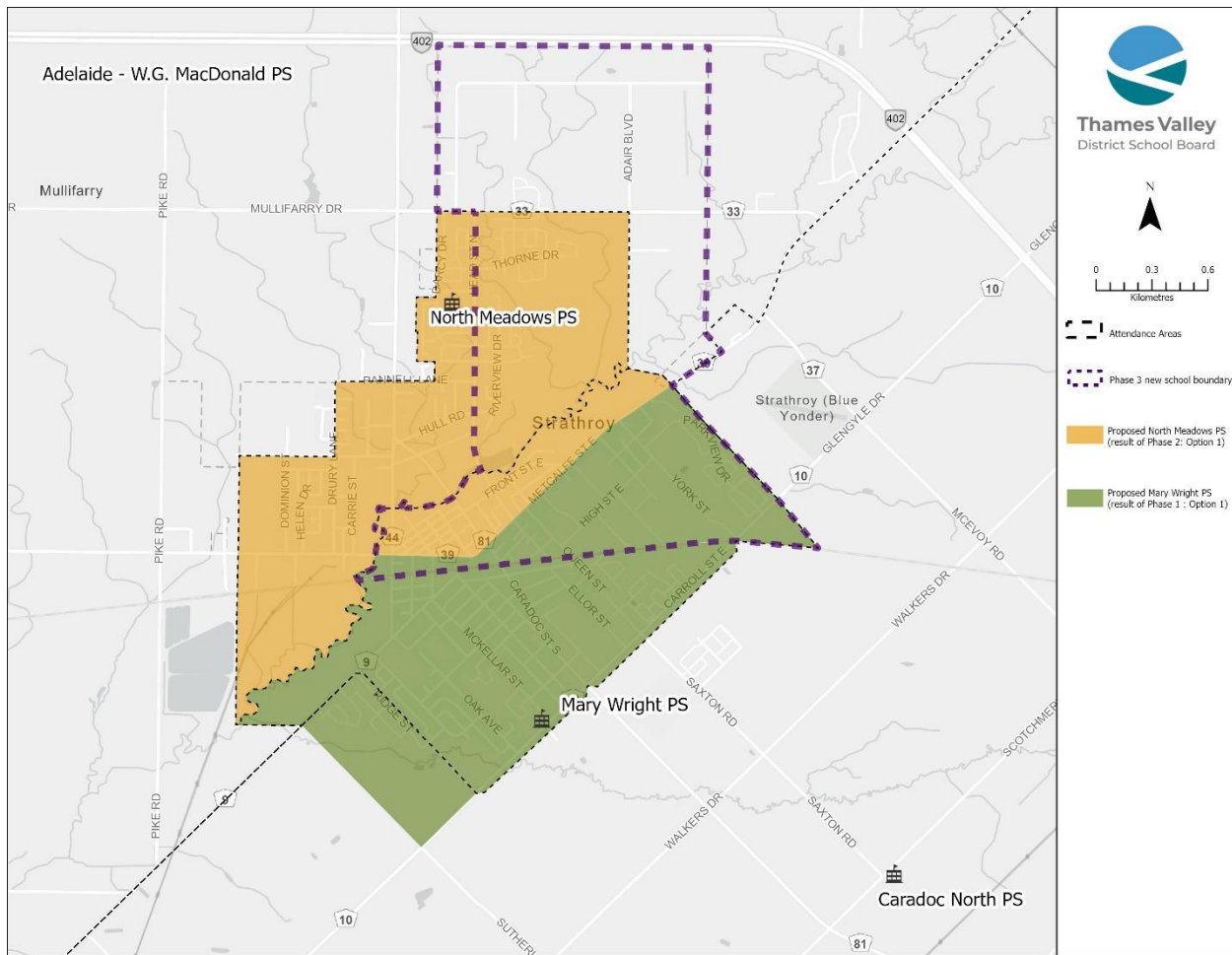
Proceeding with this option would also change the current Adelaide-W.G. MacDonald PS attendance area by designating the portion that is located in Strathroy, specifically the area north of Second Street and the North Meadows Secondary Plan area, to the new school. Currently, there are approximately five students living in this area who will have graduated from elementary school by the time the new school opens.

Timing for submitting a business case depends on how quickly housing development progresses in the North Meadows Secondary Plan area and when new pupils substantiate.

Figure 7 illustrates the recommended change in pink. Please note that the green and yellow shaded areas represent the resulting Mary Wright PS and North Meadows PS attendance areas, respectively, if Phase 1: Option 1 and Phase 2: Option 1 were approved.



**Figure 7: Phase 3**



Moving From	Students (31/32)	Receiving School
North Meadows PS	151	New Strathroy PS
Mary Wright PS	114	New Strathroy PS
Adelaide-W.G. MacDonald PS	53	New Strathroy PS

#### 4.3.1.1 Expected Outcomes

In this option, utilization at all affected schools will be close to or above 80 percent in the long term, leaving some space for any new infill development and additional pupils as growth continues in the area.

The table below shows the expected change in enrolment if this recommendation were to be approved. Enrolment figures build upon Phase 1: Option 1 and Phase 2: Option 1.

**Table 7: Phase 3 Projected Enrolment**

School	Capacity	Portables			Enrolment			Utilization		
	OTG	2026	2031	2036	2026	2031	2036	2026	2031	2036
<b>Adelaide-W.G. MacDonald PS</b>	256	0	0	0	172	195	231	67%	76%	90%
<b>Mary Wright PS</b>	534	0	0	0	410	429	466	77%	80%	87%
<b>North Meadows PS</b>	518	0	0	0	302	364	499	58%	70%	96%
<b>New Strathroy PS</b>	430	0	0	0	271	290	327	63%	67%	76%

## 5.0 Community Feedback

An Attendance Area Review Committee meeting for this review was held on November 25, 2024. The committee consists of volunteers from all school communities included in the review and the purpose of the meeting was to review the process for an attendance area review as well as the options that are being considered. After this meeting, subcommittees hosted their own meetings for their school communities to provide feedback that would be compiled into subcommittee reports. These reports have been reviewed and considered by Administration as part of the preparation of this Final Attendance Area Review Report. The key themes and recommendations from the school communities are summarized below.

### 5.1 Key Theme: student movement and wellbeing

A key theme raised by subcommittees was related to students changing schools and how it could impact their wellbeing, specifically following the unpredictable period during the COVID-19 pandemic.

#### 5.1.1 Addressing student movement concerns

Our district is located in one of the fastest growing areas in the country and with this growth come many challenges, including accommodating a rapidly growing student population. TVDSB always strives to provide the best spaces for student learning as possible, for both current and future students. Balancing enrolment across schools is an essential part of this commitment and is also required to obtain funding from the Ministry of Education for new schools and additions to support community growth.

TVDSB is committed to creating exceptional learning environments for all students across the district and recognizes that change can be a very difficult time for families. If a decision is made to approve any of

the recommended changes contained within this report, transition committees will be established at each school to assist students and their families with the changes taking place. Additionally, legacy agreement options would be offered for all students entering grade eight in the year of implementation in order to ensure students are able to graduate with their grade cohort.

## **5.2 Key Theme: changes in residential development trends**

Due to high interest rates and rising material costs, TVDSB has observed some recent changes in residential development trends. Subcommittees expressed concern that more recent development and migration trends may not be captured in the enrolment projections contained within this report.

### **5.2.1 Addressing concerns related to changes in residential development trends**

After speaking with municipal staff and completing the 2024 cycle of enrolment projections, it was confirmed that the development currently in the pipeline is still planning to move forward, albeit at a slower pace than previously anticipated. TVDSB remains committed to ongoing communication with municipalities to ensure accurate housing unit counts are being used to project student enrolment.

Additionally, some of the housing uncertainty has already been captured in the enrolment projections used for this attendance area review, resulting in the longer-term timeline for the future new Strathroy elementary school.

## **5.3 Key Theme: Programming and extra-curricular availability**

The Caradoc North PS subcommittee raised concerns around availability of programming and extra-curricular activities if the number of students at the school decreases as a result of this review.

### **5.3.1 Addressing programming concerns**

As noted in Table 3 in section 4.1.1.1 of this report, if the recommended change for Phase 1 is approved, Caradoc North PS would decrease to approximately 99% utilization in 2026, which TVDSB considers to be appropriate.

Students will maintain access to high quality educational programming and enriching experiences as part of their daily schooling. TVDSB is committed to providing the best educational spaces possible for all students across the district.

## **5.4 Key recommendation: provide legacy agreements for existing Caradoc North PS students**

The Caradoc North PS subcommittee recommended as part of their subcommittee report that all existing students at Caradoc North, and their siblings, be permitted to stay at the school until they graduate with transportation, as long as they continue to reside at their current address. The subcommittee went on to say that this recommendation would allow the school to naturally decline over time and limit the student movement that needs to take place, citing the Western Middlesex Attendance Area Review (2018) as a precedent for this strategy.

#### **5.4.1 Addressing the recommendation to provide legacy agreements for existing students**

TVDSB Administration reviewed the request to consider providing legacy agreements to all current Caradoc North PS students and their siblings with transportation. After confirming with Student Transportation Services, the portion of the current Caradoc North PS attendance area that is proposed to be designated to Mary Wright PS as part of Phase 1: Option 1 is not entirely contained within the non-transportation zone (1.6 km walking distance from Mary Wright PS). This means that even if new registrations, not including siblings of current Caradoc North PS students, were the only students designated to attend Mary Wright PS, they may still require busing to the school depending on their home address. In the same subdivision, other students would be getting bused to Caradoc North PS, requiring the transportation consortium to run multiple routes for the neighbourhood.

TVDSB's practice is to offer legacy agreement options to students entering grade eight and their siblings in the year of implementation only, with transportation if they are eligible. Siblings are then expected to move to the new designated school after the grade eight student graduates. Given the cost of transportation, transportation can only be provided to those attending their area schools.

#### **5.5 Key recommendation: alternatively, allow existing Caradoc North PS students legacy agreements without transportation**

The Caradoc North PS subcommittee recommended that as an alternative to the previous request for legacy agreements noted above, all current Caradoc North students and their siblings remain at Caradoc North PS without transportation until they graduate as long as they continue to reside at their current address if Phase 1: Option 1 is approved. Further, that any student unable to provide their own transportation be required to attend Mary Wright PS at the time of implementation, with families able to switch to Mary Wright PS in September of 2025 if they wish.

#### **5.5.1 Addressing the recommendation to provide legacy agreements without transportation**

If Phase 1: Option 1 is approved by Trustees, families may apply for out-of-area exemptions to remain at Caradoc North, per the usual process outlined in Procedure 4012a. These exemption requests are evaluated on a case-by-case basis.

### **6.0 Recommended Changes**

This attendance area review has resulted in the preparation of recommendations to Trustees after reviewing the feedback received from all school subcommittees.

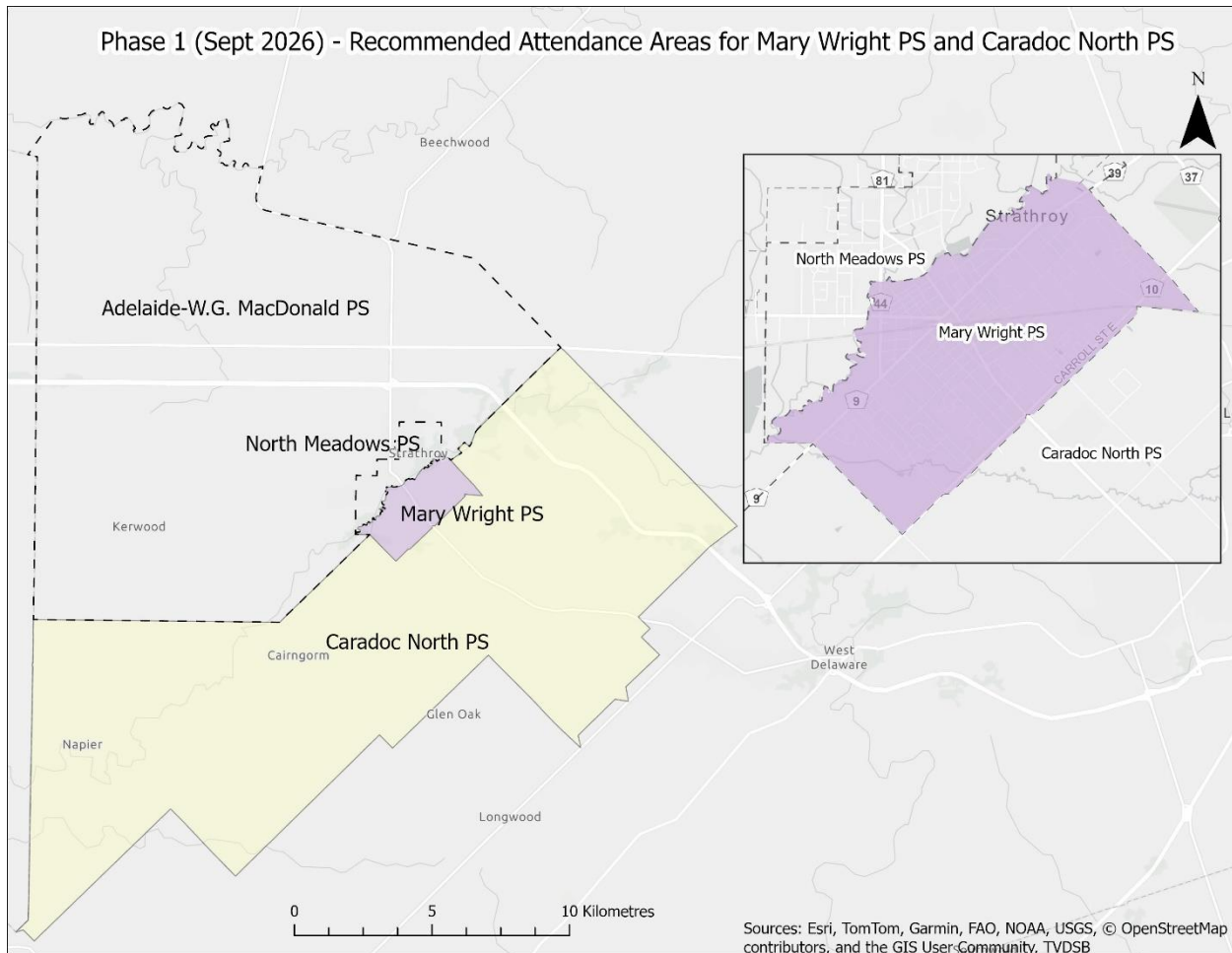
#### **6.1 Phase 1: Caradoc North Public School and Mary Wright Public School**

A boundary change between Caradoc North PS and Mary Wright PS is being recommended to balance enrolment between the two schools and designate students to a more proximal school. It is recommended that the attendance areas of the two schools be changed according to Figure 8 below and take effect in September 2026, and that legacy agreement options be offered to all students entering grade eight and their siblings for the year of implementation only, with transportation (if eligible).

### 6.1.1 Expected Outcomes

School utilization at Caradoc North PS is expected to drop to 99% in the year of implementation and remain stable around 100% utilization well into the future. Mary Wright PS is expected to rise to approximately 103% utilization and remain stable at that level as well.

**Figure 8: Phase 1 (Sept 2026) - Recommended Attendance Areas for Mary Wright PS and Caradoc North PS**



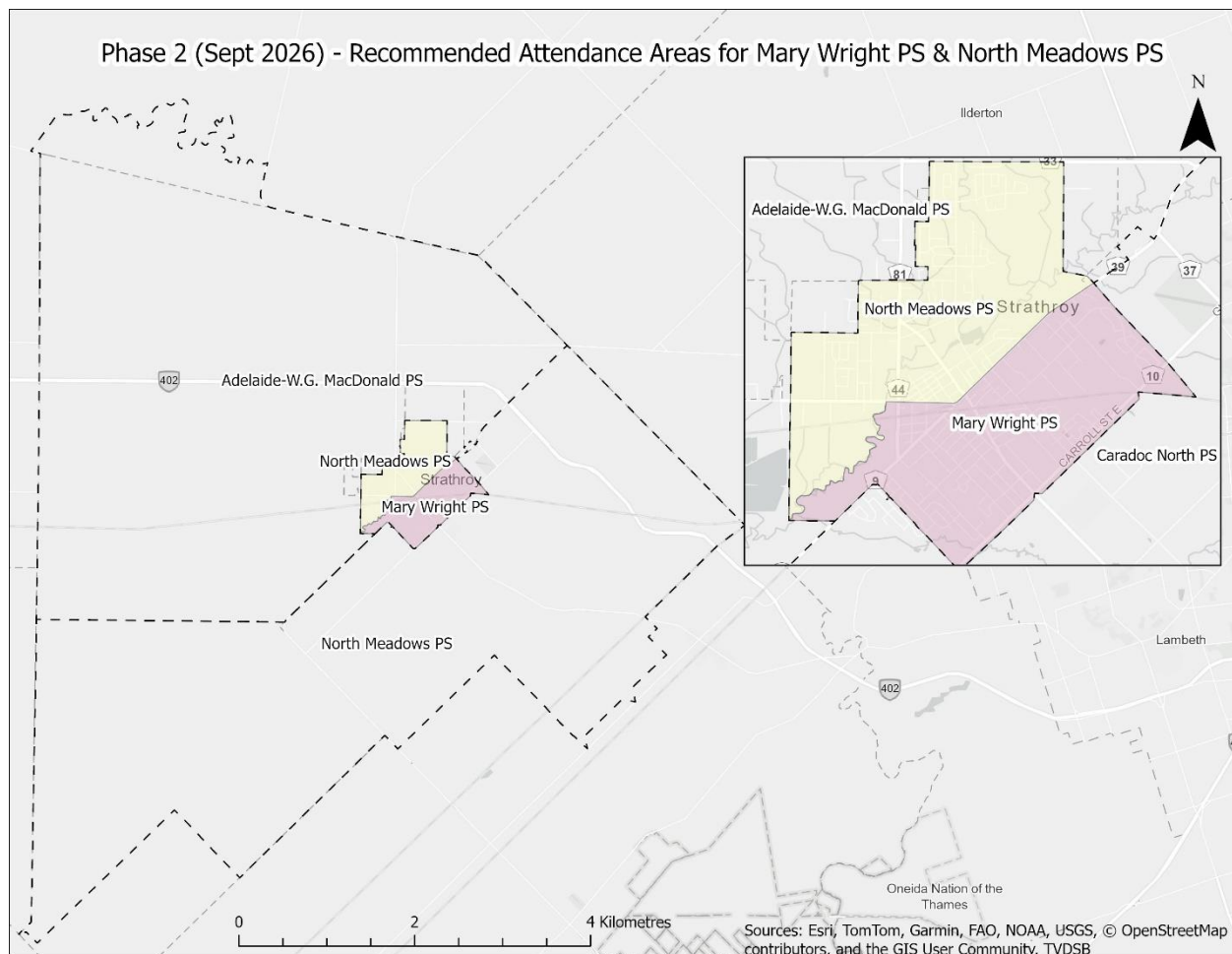
### 6.2 Phase 2: Mary Wright Public School and North Meadows Public School

A boundary change is also recommended between Mary Wright PS and North Meadows PS to balance enrolment between the two schools at the same time as the Phase 1 changes take effect and prepare for a future new elementary school in Strathroy. It is recommended that the attendance areas for Mary Wright PS and North Meadows PS be changed according to Figure 9 below and take effect in September 2026. It is also recommended that legacy agreement options be offered to all students entering grade eight and their siblings for the year of implementation only, with transportation (if eligible).

### 6.2.1 Expected Outcomes

Enrolment at Mary Wright PS is expected to be 98% utilization in the year of implementation and remain stable. Enrolment at North Meadows PS is expected to rise to 87% utilization in the year of implementation and climb to 95% by 2031.

**Figure 9: Phase 2 (September 2026) – Recommended Attendance Areas for Mary Wright PS & North Meadows PS**



### 6.3 Phase 3: Attendance Area for Future New Strathroy Elementary School

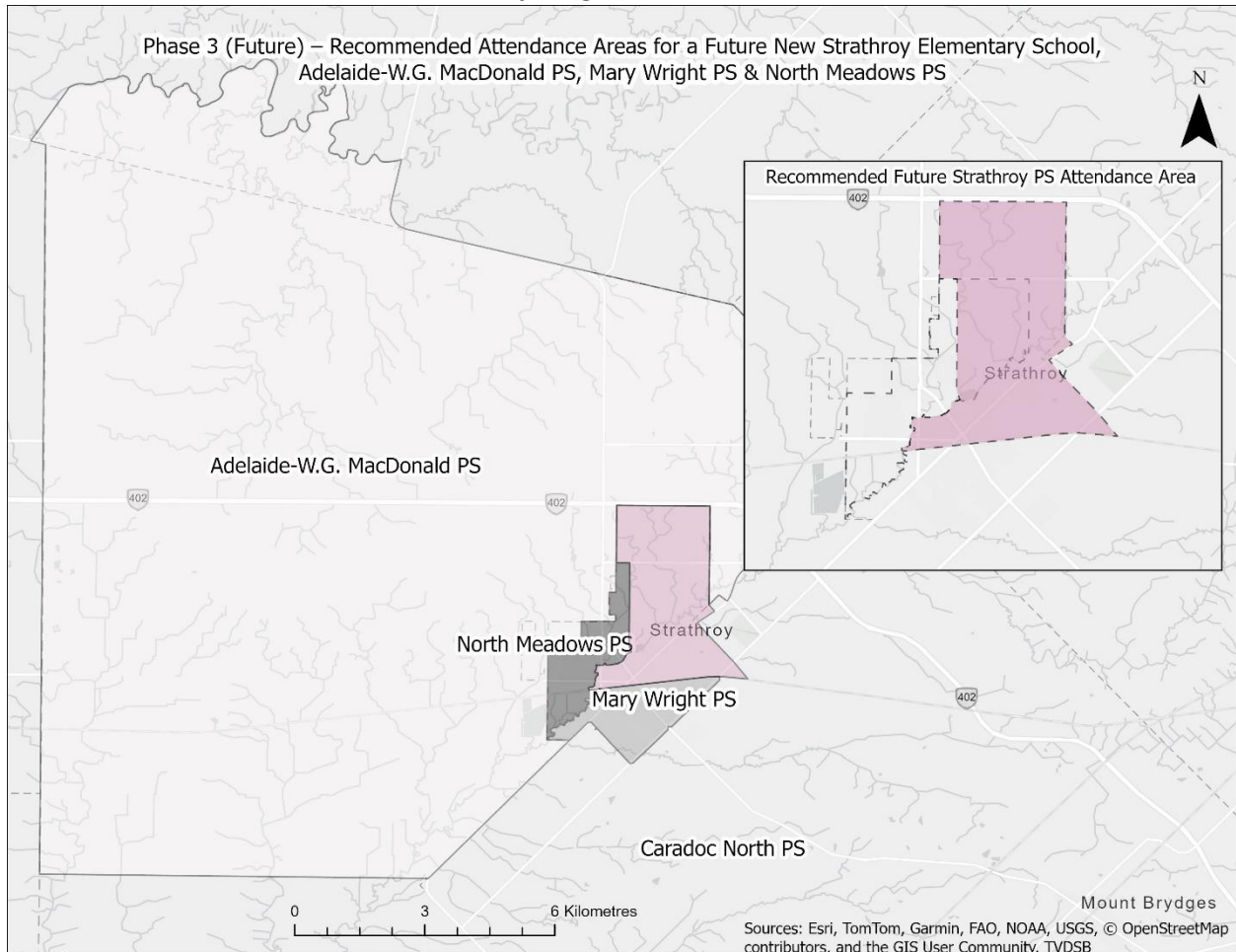
It is recommended that a new attendance area be created for a new elementary school in Strathroy. The new attendance area would impact Adelaide-W.G. MacDonald PS, North Meadows PS, and Mary Wright PS. It is recommended that attendance areas be changed according to Figure 10 below and take effect upon the opening of the new school. It is also recommended that legacy agreement options be offered to all students entering grade eight and their siblings for the year of implementation only, with transportation (if eligible).



### 6.3.1 Expected Outcomes

Utilization at Adelaide-W.G. MacDonald PS would be 90% in the approximate year of implementation. Utilization at North Meadows PS and Mary Wright PS would be 96% and 87%, respectively. It is important to note that the timing of funding approval and opening for a new elementary school is dependent on the pace of development and enrolment growth in the community.

**Figure 10: Phase 3 (Future) – Recommended Attendance Areas for a Future New Strathroy Elementary School, Adelaide-W.G. MacDonald PS, Mary Wright PS & North Meadows PS**



## 7.0 References

Middlesex County. 2021. Population and Housing Projections for Middlesex County.  
[https://www.middlesex.ca/sites/default/files/2022-04/4942\\_B\\_3\\_CW\\_Action\\_January\\_19\\_Population\\_Projections\\_0.pdf](https://www.middlesex.ca/sites/default/files/2022-04/4942_B_3_CW_Action_January_19_Population_Projections_0.pdf)

Statistics Canada. 2023. (table). *Census Profile*. 2021 Census of Population. Statistics Canada Catalogue no. 98-316-X2021001. Ottawa. Released November 15, 2023.  
<https://www12.statcan.gc.ca/census-recensement/2021/dp-pd/prof/index.cfm?Lang=E> (accessed September 19, 2024)

Strathroy-Caradoc. 2024. *Strathroy-Caradoc Official Plan – Updated August 2024*.  
<https://www.strathroy-caradoc.ca/en/city-hall/Official-Plan.aspx>





**Thames Valley**  
District School Board

**Adelaide Metcalfe and  
Strathroy-Caradoc  
Elementary Panel  
Attendance Area Review**

# **Appendix C: Subcommittee Reports**

**tvdsb.ca**

## **Table of Contents**

Subcommittee Report: Adelaide W.G. MacDonald PS.....	3
Subcommittee Report: Caradoc North PS.....	4
Subcommittee Report: Mary Wright PS.....	14
Subcommittee Report: North Meadows PS.....	15



## **Subcommittee Report: Adelaide W.G. MacDonald PS**

### **Report Details**

**School Name:** Adelaide W.G. MacDonald Public School

**Date of Submission:** February 12, 2025

### **Sub-Committee Members and Affiliation:**

Primary/Junior (4-6) -Carrie Hendrikx (Secretary)

Intermediate (7-8) -Melissa Meuwissen

Junior/Intermediate/School Council Chair-Sara Schoenmakers (Chair)

### **School Community Meetings:**

Date: Wednesday, January 15, 2025

6:00 p.m. School Library

### **Number of Attendees:**

5 in person including subcommittee members and acting principal

6 virtual

### **Report**

#### **Executive Summary Executive Summary**

#### **Brief School Community Profile**

Adelaide W.G. MacDonald is a fully bused school in the township of Adelaide-Metcalfe. The school community has a mixed population from poverty to middle class and draws from subsidies housing, Strathroy and surrounding rural areas. At present, Adelaide has 182 students. The school does not offer a before and after school program. The Adelaide Home and School/ School Council is very active and offers breakfast program 5 days a week plus additional special snack days etc.

#### **Feedback Regarding Proposal**

There was no feedback, questions or discussion by attendees regarding the potential new school. If any questions or feedback came up after the meeting, those in attendance were encouraged to visit the link provided, ask any member of the subcommittee, email TVDSB or write a letter if they preferred. Mailing address was provided by email after the meeting.

#### **Recommendations & Considerations**

- If the new school is approved, it is recommended that the TVDSB have complete transparency with the school community as students enroll who may potentially be affected.

## **Subcommittee Report: Caradoc North PS**

**School Name:** Caradoc North PS

**Date of Submission:** February 20, 2025

**Sub-Committee Members and Affiliation:**

Rhonda Stinson- Administrator - Principal of Caradoc North

Amanda Sawyer-Noel - Chair

Sarah McAllan- Secretary

Tina Parish – School Council

Ian Clark

Jenni-Lynn Simpson

Kimberly Samela

Amy Poaps

**School Community Meetings:**

**Date(s):**

- a. Meeting #1 – January 13, 2025
- b. Meeting #2 – January 27, 2025

**Number of attendees at each meeting:**

- a. 13 parents/caregivers and School Board Trustee- Arlene Morell
- b. 7 parents/caregivers

**Number of participants in discussion at each meeting:**

- a. 15
- b. 11

---

# Caradoc North PS Caradoc North AARC Subcommittee Report

---

Respectfully Submitted on behalf of  
the entire Caradoc North PS Caradoc North AARC subcommittee:

---

Chairperson, Amanda Sawyer-Noel

## **EXECUTIVE SUMMARY**

TVDSB has presented the community with two options aimed at stabilizing enrollment growth at Caradoc North PS, with the goal of maximizing capacity across all area elementary schools to secure funding for a new school. This report critically examines both Phase 1, Option 1 and Phase 1, Option 2, highlighting their potential impact on Caradoc North PS' students, families, and the broader school community.

The Caradoc North AARC subcommittee strongly believes that keeping all students together is essential to preserving the deep-rooted sense of community and continuity that makes Caradoc North PS truly special. Families move to this area not just for the peaceful rural setting but because they want their children to experience the strong sense of belonging that defines our school.

Caradoc North isn't just a school, it's a community. It's where siblings grow up learning under the same roof, where friendships span across grades, and where students support each other both in and out of the classroom. From intramural sports and student clubs to talent shows and drama productions, every child has the opportunity to discover their passions and build lifelong memories.

This sense of connection goes beyond graduation. Many of our high school students return to Caradoc North for their co-op placements, eager to give back to the school that shaped them. Even more inspiring, some graduates have gone on to become teachers themselves, choosing to return and teach at Caradoc North—bringing their journey full circle.

Keeping our students together isn't just about education; it's about preserving the heart of our community. Splitting the school population would unnecessarily disrupt these bonds, causing stress and instability for both the students forced to move and those left behind. Maintaining the school's population as a whole, safeguards its rich traditions, strong community ties, and the personalized learning experience that families deliberately choose for their children.

We urge TVDSB to prioritize student well-being and long-term stability over short-term administrative fixes by keeping our school community intact. By ensuring that Caradoc North remains a place where students grow, learn, and return, we continue a tradition of excellence, connection, and hometown pride.

## **SCHOOL COMMUNITY PROFILE**

Caradoc North PS has been an integral part of the Strathroy and Strathroy-Caradoc community for 64 years, providing students with a strong academic foundation and a well-rounded educational experience. As a small rural school, it has cultivated a close-knit environment with longstanding traditions, a strong sense of community, and a variety of extracurricular opportunities, including sports, drama, and the arts.

Despite its size, Caradoc North PS offers a rich academic and social environment where students excel. This is evident in the school's consistently strong EQAO test scores and positive School Climate Survey results, even in the face of challenges such as the COVID-19 pandemic. These achievements highlight the school's ability to provide high-quality education and a supportive atmosphere that fosters student success.

## Infrastructure & Facilities

Caradoc North PS offers both indoor and outdoor spaces designed to support student growth and engagement. The school features:

- **9 standard classrooms**, including one dedicated as a **STEM resource room**
- **4 portables**, with 3 serving as standard classrooms and 1 designated as a **music resource room** (please note: this designation was not included in the TVDSB report)
- **A small gymnasium** that accommodates physical education, school-wide activities, and special events such as assemblies, the annual Christmas concert, intramurals, the talent show, and drama productions.
- **A well-stocked library resource center** that promotes literacy and research opportunities

Each classroom is equipped with a Smartboard and students have access to Chromebook for research and additional learning.

Beyond the classroom, Caradoc North PS provides **extensive outdoor space**, encouraging physical activity, exploration, and hands-on learning. The school grounds include:

- Multiple **soccer fields**
- **A large sandbox** for creative play
- A newly established **outdoor education center** featuring trees, a storage shed, easels, and equipment tailored for kindergarten students
- **Two gaga ball pits** and **multiple climbers** to promote active play
- **A baseball diamond**

While Caradoc North PS has ample green space that could support expansion without compromising its commitment to outdoor play, the limitations of its private sewer system present a significant challenge. The Caradoc North AARC subcommittee acknowledges that these constraints must be carefully considered when evaluating future growth and facility planning.

## ENROLLMENT & CAPACITY TRENDS

As with so many communities, Strathroy-Caradoc experienced extensive growth throughout the pandemic, resulting in a boost in enrollment at Caradoc North PS. The school currently has **238 students** enrolled. The data provided by TVDSB shows projected numbers are expected to continue to grow, however the Caradoc North AARC subcommittee's own research & community surveys show that enrollment is expected to decline naturally. Furthermore, the Caradoc North AARC subcommittee believes that the student enrollment projections provided by TVDSB are inflated and do not accurately reflect the real-time data collected.

Enrollment Trends Based on TVDSB Data

The report provided by TVDSB stipulates that Option 1, Phase 1 has an expected student population of **66 students by 2026**. Based on the committee’s research, the current enrollment for JK- Grade 7 for the area is **39 students**, with only **5 JK’s** for the 2025-2026 year.



The Caradoc North AARC subcommittee engaged with families in the affected area to verify the current enrollment numbers and has compiled the below representation of the estimated student population as of September 2025 in the Phase 1 Option 1 area compared to the TVDSB projections:

Grade	JK	SK	1	2	3	4	5	6	7	8	Total
TVDSB Projection	8	3	6	7	8	11	3	8	11	2	67
Caradoc North AARC Subcommittee Estimate	5	2	8	3	6	2	5	3	6	4	44



This is further proven by the following data provided by TVDSB which highlights the **inconsistencies** between projected and actual student population trends:

Year	# of Students Lost in Previous Year	Enrollment Increase from Previous Year	# of Grade 8's Graduating
2021	4	10	24
2022	1	26	21
2023	7	7	22
2024	8	-3	14

The chart above, provided to the Caradoc North AARC subcommittee by Sonia Basu of TVDSB on January 27th, 2025 ([AMSCAAR Q&A](#)), contradicts TVDSB's projections and instead indicates a gradual decline in enrollment.

### CURRENT AND PROJECTED RESIDENTIAL DEVELOPMENT

TVDSB claim that *Caradoc North PS is experiencing enrollment growth due to greenfield development in Strathroy* does not fully align with the reality that development in Phase 1, Option 1 has been completed, with no further development expected. The surrounding green space in the area is currently designated as agricultural (ref page 175: [Strathroy Caradoc Building & Planning](#)

Furthermore, anticipated development projects in the Phase 1, Option 2 Southgrove development area (estimated at 28 homes) has been stalled due to infrastructure delays with drainage and current economic strains from rising interest rates.

Additionally, the potential impact of the U.S. tariffs, particularly the 25% levy on exports like aluminum and steel, could have a significant effect on manufacturing plants in the Strathroy area, which account for 15.2% of the local workforce. (ref: [Labour Force Demographics](#) ). With the potential for job instability families may be hesitant to purchase a new home while others may relocate to find other opportunities.

Given these concerns and the many uncertainties, it calls into question whether this is the right time to consider relocating schools.

### IMPACT OF INFLATED ENROLLMENT PROJECTIONS VS. REAL TIME DATA

- The 2026 projection of 129% capacity may be inflated, based on real-time data collected by the Caradoc North AARC subcommittee, which shows a current decline in enrollment. TVDSB goal is to ensure Caradoc North is well utilized and not under-populated; however, prematurely shifting students may inadvertently accelerate this decline.
- As a small school, a decline of 16-27% in enrollment would significantly impact Caradoc North PS's culture, as well as its ability to sustain **sports teams** or **arts programs**, including the growing **drama program**. It is important to note that the recent *Annie* production was a major success, with three sold-out shows, each with a 300-seat capacity. The profits from these performances were used to fund a Robert Munsch book presentation, benefiting the

entire school. This not only highlights the dedication of the community to support the school but also demonstrates the value placed on enriching students' educational experiences.

- We acknowledge that this proposal stems from the board's desire to develop a business plan for a new school, a process that can take time to gain approval and complete. In five years, many students currently in the system—particularly those in grades 4 through 8—will have graduated. While the board's decision is recognized, the impact of changes taking effect in 2026 should be carefully considered. Given that planning is still in its preliminary stages, by the time the plan is finalized and implemented, a significant portion of the affected student population will have already moved on to post-secondary education or may have relocated altogether.

## COMMUNITY OPINION

A community survey was conducted over a one-week period, targeting families currently residing in the affected areas of Option 1 Phase 1 and Option 1 Phase 2, with students enrolled at Caradoc North PS. The survey asked:

*If TVDSB changes boundaries and your child(ren) are moved to Mary Wright PS, would you consider transferring to another school board?*

Out of the 20 families who responded, at least **37 students**—representing a sizable portion of the school's enrollment—indicated they would consider switching to another school board if the boundary change is implemented.

Based on the 2024-2025 Funding Guide, the average funding per student ranges from \$12,700 to \$36,600 (ref: [Ontario Education Funding Guide](#)). For 37 students from 20 families, this translates to a potential loss in funding ranging from \$469,900 to \$1,354,200—a substantial financial impact that could affect the school's ability to maintain its programs and resources.

This data correlates with the current trends noted by TVDSB and the community as a whole regarding families opting to join the LDCSB (ref: [CBC News Why are there so many non catholic students in catholic schools](#))

## CARADOC NORTH AARC SUBCOMITTEE RECOMMENDATIONS

### Phase 1 – Option 2 (Not recommended)

The Caradoc North AARC subcommittee agrees with the TVDSB's Planning Report and strongly opposes **Phase 1, Option 2** as it would result in Caradoc North PS being under capacity and underutilized, ultimately disadvantaging all students and undermining the intent of TVDSB. The Caradoc North AARC subcommittee recommends removing Phase 1, Option 2 entirely.

## **Phase 1 – Option 1 (Recommended by TVDSB)**

### **PREFERRED REQUESTS**

The Caradoc North AARC subcommittee requests consideration for the following recommendations given the clear enrollment decline, reduced enrollment projections and community priorities:

1. Maintaining all students currently enrolled or who will be enrolled for the 2026 school year, along with their siblings (23 families), at Caradoc North PS, with transportation provided until they graduate, if they continue to reside at their current addresses. Allowing the population to naturally decline as outlined in the previously shown enrollment chart provided by Sonia Basu of TVDSB on January 27th, 2025 ([AMSCAAR Q&A](#))

Previous TVDSB decisions such as [Western Middlesex \(WMAAR\)](#) have shown this to be a viable and agreeable alternative.

Additionally, it should be noted that all students in the affected area are currently eligible for bussing.

2. Removing this area from the current holding zone and directing all new registrants from the area to Mary Wright PS.

### **CONTINGENCIES REQUESTS**

Should the above preferred recommendation not be accepted by TVDSB, the Caradoc North AARC subcommittee respectfully requests consideration of the following alternative:

1. Allowing all students currently enrolled or who will be enrolled for the 2026 school year, along with their siblings (23 families), to remain at Caradoc North PS without transportation for the duration of their schooling, as long as they continue to reside at their current address.

This option would enable parents to drive their children to and from school, helping to alleviate the burden on the transportation budget.

Should parents be unable to provide their own transportation, students will be required to attend Mary Wright PS if they choose to remain within TVDSB.

2. Allowing voluntary enrollment at Mary Wright PS for students from the affected area, starting September 2025, for any parents who wish to make the transition.

The Caradoc North AARC subcommittee acknowledges that this option would provide less preparation time for the transition to both the school and families. However, some families have expressed a preference for a quicker transition to reduce the anxiety associated with prolonged uncertainty. Additionally, students enrolled for JK in 2025 would have the option to begin and remain at Mary Wright PS, avoiding the disruption of a move in the following year.

## BENEFITS & JUSTIFICATION OF RECOMMENDATIONS



Maintaining the current school boundaries at Caradoc North PS is essential to preserving the school's deep-rooted community connections and traditions, while minimizing unnecessary disruptions to students and families. This approach directly supports TVDSB's 'Essential Conditions for Learning,' ensuring that students at Caradoc North can maintain their meaningful relationships and feel safe, supported, and connected.

The COVID-19 pandemic has been an especially challenging time for children, who have spent a significant portion of their formative years navigating its disruptions. The students affected by this attendance area review have experienced the majority of their elementary school years in a pandemic era—one marked by uncertainty, disconnection, and emotional dysregulation, all of which have impacted their ability to learn. The loss of in-person learning, favorite activities, and social interactions with friends was a shared experience that profoundly affected their development and well-being.

Despite the significant impact on children's mental health, this issue has received limited attention in medical literature. However, research from multiple countries has shown that the pandemic was linked to increased stress, depression, anxiety, insomnia, substance misuse, and other mental health challenges among young people. Recognizing and addressing these long-term effects is essential for developing effective interventions that foster resilience and well-being.

Today's children are more emotionally vulnerable than those who came before them. As they continue to grow and adapt, they deserve grace, understanding, and a commitment to prioritizing their best interests above all else.

The Caradoc North AARC subcommittee strongly believes that the close-knit culture within this school community has played a pivotal role in supporting the mental health of our students, particularly as they navigated the challenges of the pandemic. After such a tumultuous period, students are only just beginning to re-establish stability and routine in their school life. To uproot them now would risk undoing the significant emotional progress they've made.

Ensuring that all students currently attending Caradoc North PS, and those enrolled by 2026, can remain at the school with transportation provided is not merely a logistical matter but also about safeguarding their education and overall well-being. This solution aligns with the requests of our families, preserves the continuity of learning, and strengthens the community ties that make Caradoc North so special.

With no further development expected in the area, directing new students to Mary Wright PS presents a practical and sustainable long-term strategy for managing enrollment, without displacing those who already call Caradoc North home. It is worth noting that there are only **23** families currently

enrolled in the Phase 1 Option 1 area, meaning the impact on overall enrollment is minimal. This strategy avoids unnecessary boundary changes and allows for a gradual, respectful transition rather than abrupt disruptions.

By adopting these recommendations, the board can ensure enrollment decisions are made thoughtfully and with care, prioritizing the needs of our families while ensuring long-term planning remains aligned with the values and needs of our community.

## **CONCLUSION**

The Caradoc North AARC subcommittee strongly urges the TVDSB to consider our recommendations as a balanced and sustainable solution that prioritizes student well-being, community stability, and accurate enrollment trends. The data clearly shows that enrollment at Caradoc North PS is naturally declining, and premature boundary changes would disrupt students, weaken school culture, and accelerate under-enrollment.

By maintaining current students at Caradoc North PS with transportation support, redirecting new registrants to Mary Wright PS, and offering voluntary enrollment starting in 2026, the board can effectively manage enrollment without unnecessary displacement. This approach ensures long-term stability, respects parental choice, and aligns with real demographic shifts rather than speculative projections.

We strongly urge the board to adopt these recommendations to prevent unnecessary disruption and uphold the integrity of our school community.

## **Subcommittee Report: Mary Wright PS**

### **Report Details**

School Name: Mary Wright Public School

Date of Submission: Thursday, February 20, 2025

Sub-Committee Members and Affiliation: Sarah Periard (Co-Chair, Council); Allan Self (Co-Chair, Council); Marek Miskiewicz (Principal); Jason Furness (Vice-Principal)

School Community Meetings:

Date(s): Monday, January 27, 6pm

Number of Attendees at each meeting: 9

Number of Participants in Discussion at each meeting: 9

### **Report**

1. Executive Summary: Attendees received the AARC presentation and overview
2. Brief School Community Profile: All questions were addressed through the Q&A information provided by the Board.

Feedback Regarding Proposal: Questions centred around bussing (distance) and process for Grade 8 students (and siblings); A participant asked what sort of feedback other SubCommittees had received, and as we were unable to answer, we would recommend that access is provided (for community members) to other subcommittee reports.

3. Recommendations & Considerations: No other outstanding items were raised at the meeting
4. Appendices: none



## **Subcommittee Report: North Meadows PS**

### **Report Details**

School Name: North Meadows

Date of Submission:

Sub-Committee Members and Affiliation: Jonathan Lampman-Chair,, Sara Dale-School Council Chair, Kelli Wilcocks-Principal, Julie MacFarlane- Indigenous Representative

School Community Meetings:

Date(s): January 22, 2025, February 4, 2025

Number of Attendees at each meeting: 4 at Jan. 22, 3 at Feb. 4

Number of Participants in Discussion at each meeting: 4 at Jan. 22, 3 at Feb. 4

### **Report**

- **Executive Summary**

Expression of Interest Forms for AMSAAR were sent out to families on October 23, 2024. Three members expressed interest in becoming part of the AARC process. One of the members did not attend any of the meetings. The remaining members in addition to our School Council chair formed the subcommittee. We met officially on the above dates and times and once prior to discuss our public meeting. The meeting date and link was posted in School Messenger on two occasions. The public meeting was held on January 22, 2025, where many questions were asked and answered by the TVDSB Committee as posted in the meeting minutes. February 5 there was a final meeting with the same 4 attendees to summarize the subcommittee's recommendations and considerations.

- **Brief School Community Profile**



North Meadows is an elementary school K-8 that is located on the north side of the town of Strathroy. It is situated in a neighbourhood with surrounding homes with an average of about 25 years old. There are currently 435 students in 19 classrooms plus an additional system Transitions classroom. Many of our students are within walking distance and we currently utilize 3 busses plus 4 additional vans for students with special needs. There are many homes and apartments currently being built within our boundaries.

- Feedback Regarding Proposal

North Meadows will be receiving additional students with both options and will not be asked to move to a new school until 2036. The subcommittee felt that there would be minimal effect on the current students other than the additional students arriving in option1. Concerns were raised regarding working with current students and staff to ensure that there is work on being inclusive and welcoming to new students and that any students requiring supports and Special education needs will continue to have their needs met. The proposal was understood and was generally well received by the subcommittee. Additional engagement was done with both School Council and with the YMCA before and after school care.

- Recommendations & Considerations

The subcommittee is in support of Option 1 proposed through the AMSCAR process (29 students arriving at North Meadows). In consideration of Option 1 the subcommittee would ask that TVDSB consider the following items:

- Creating an inclusive environment at North Meadows for the new arriving students.
- Recognition of the possible special needs of the future students i.e. social, emotional, and educational supports.
- Additional school support counselling should be in place for a minimum of six-month period to assist students who may struggle with the transition to a new school.





- TVDSB work together with YMCA to support the transition of before and after care across all schools impacted.
- Suggestion of a minimum additional 1.0FTE teacher, plus extra LST teacher, VP, Custodial, lunch supervisors and other staff at every level to offset the increased number of new students (29).
- Working with the Town of Strathroy to create additional parking to facilitate the additional Bus as well as parent traffic at key drop off and pick up times.

#### Appendices