



COMPILED PARTS		
PART	LOT	PERPENDICULAR WIDTH (METRES)
1	Part of 19	1.400
2	Part of 22	1.400
3	Part of 26	1.400

I REQUIRE THIS PLAN TO BE DEPOSITED UNDER THE LAND TITLES ACT.

PLAN 33R-21370

RECEIVED AND DEPOSITED

DATE OCTOBER 03, 2022

DATE October 5, 2022

SIGNED: *P. R. Levac*
P.R. LEVAC, O.L.S.
MTE OLS LTD.

M. Dietrich
REPRESENTATIVE FOR THE LAND REGISTRAR FOR THE LAND TITLES DIVISION OF MIDDLESEX (N°33)

SCHEDULE

PART	LOT	PLAN	P.I.N.
1	Part of 19		Part of 08521 - 0256
2	Part of 22	33M-822	Part of 08521 - 0259
3	Part of 26		Part of 08521 - 0263

COMPILED PLAN

of part of
LOTS 19, 22 and 26
PLAN 33M-822

IN THE
MUNICIPALITY OF STRATHROY-CARADOC
COUNTY OF MIDDLESEX

SCALE 1 : 300
MTE OLS LTD.



METRIC: DISTANCES AND COORDINATES SHOWN ON THIS PLAN ARE IN METRES AND CAN BE CONVERTED TO FEET BY DIVIDING BY 0.3048

NOTES

MEASUREMENTS SHOWN ON PARTS 1, 2 and 3 REPRESENT THE PERPENDICULAR WIDTH

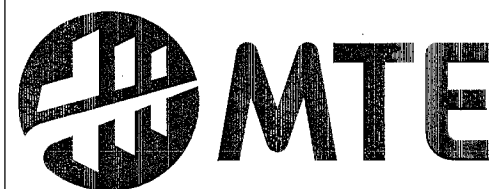
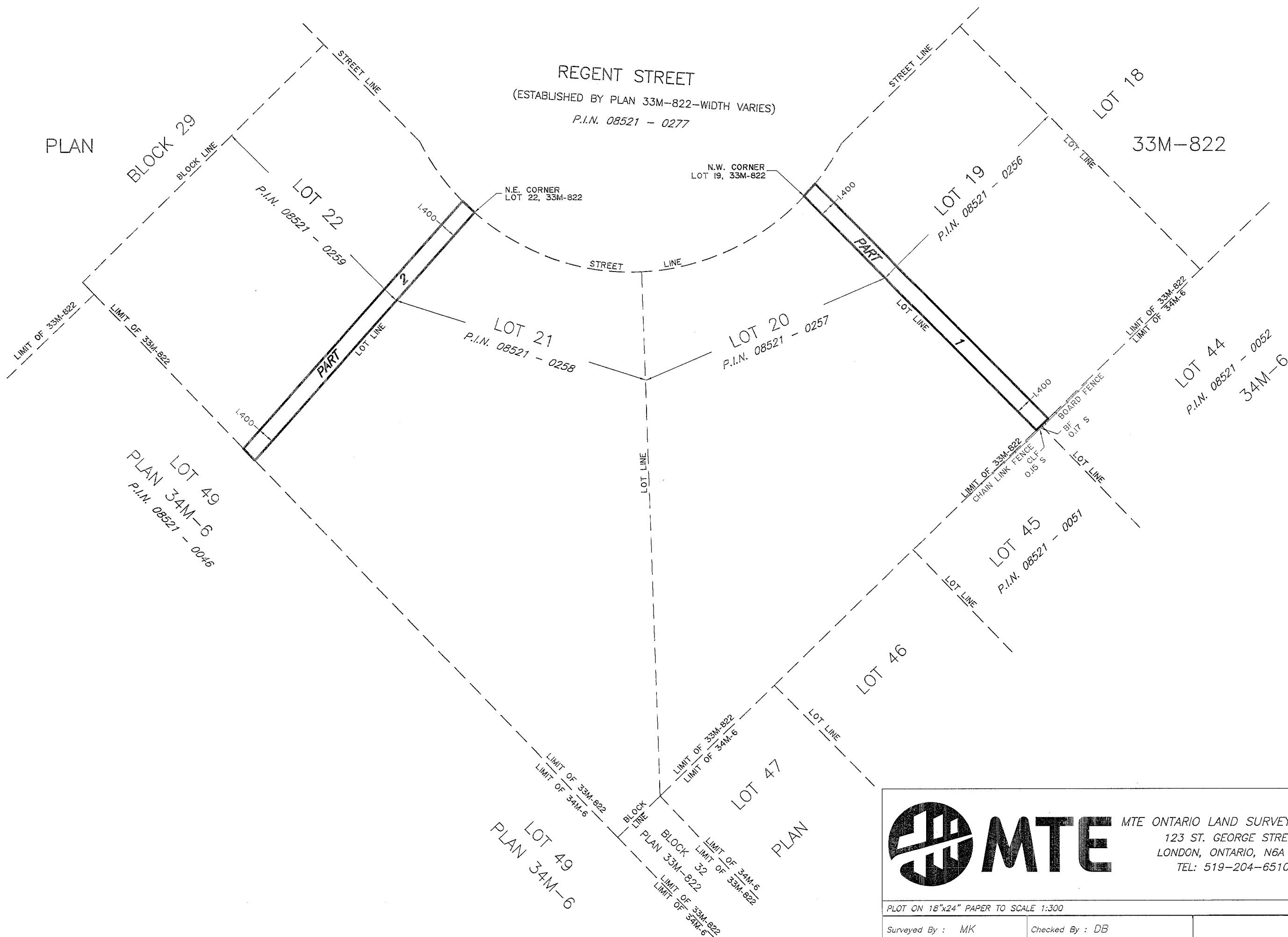
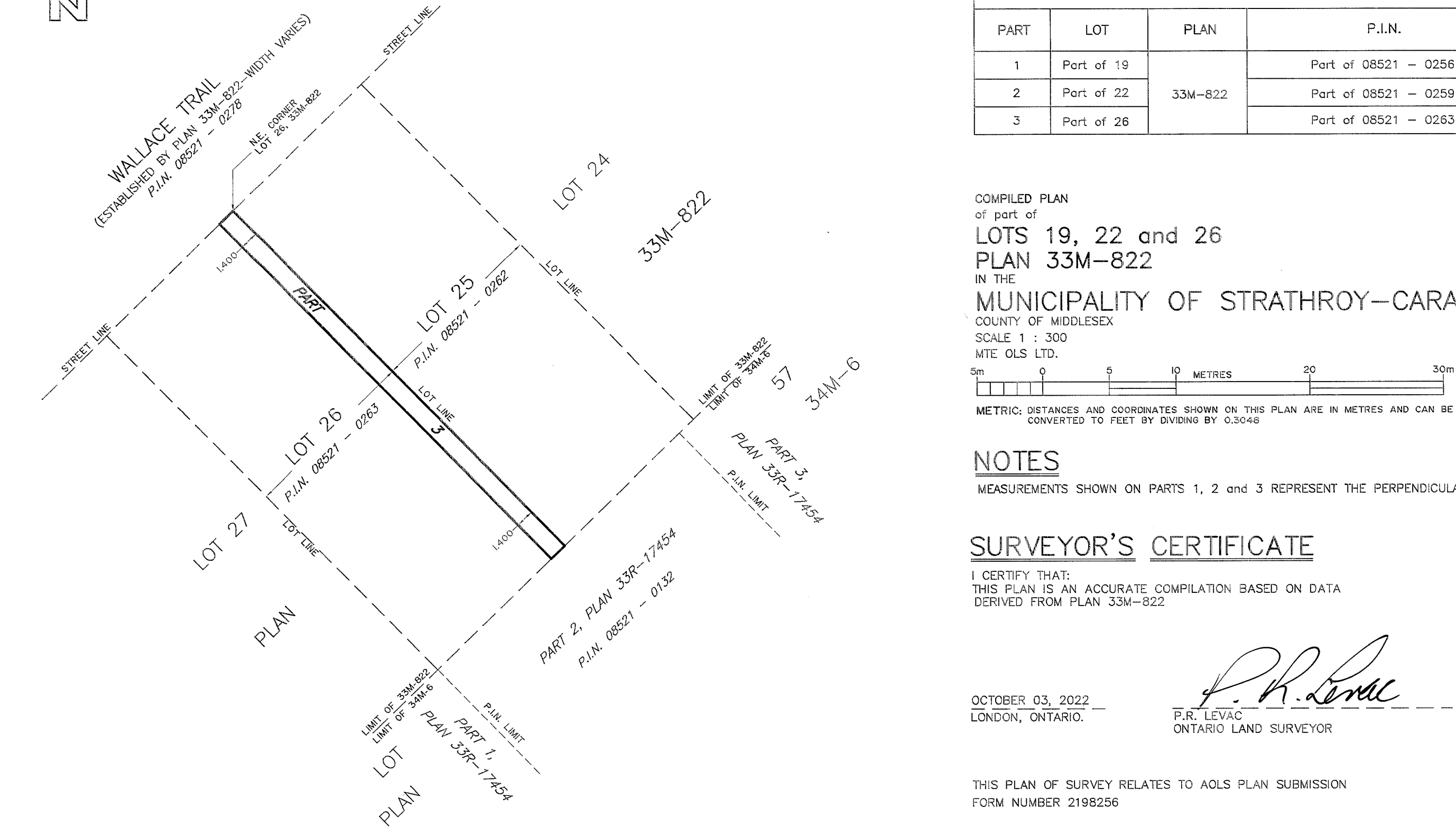
SURVEYOR'S CERTIFICATE

I CERTIFY THAT:
THIS PLAN IS AN ACCURATE COMPILATION BASED ON DATA
DERIVED FROM PLAN 33M-822

OCTOBER 03, 2022
LONDON, ONTARIO.

P. R. Levac
P.R. LEVAC
ONTARIO LAND SURVEYOR

THIS PLAN OF SURVEY RELATES TO AOLS PLAN SUBMISSION
FORM NUMBER 2198256



MTE ONTARIO LAND SURVEYORS LTD.
123 ST. GEORGE STREET
LONDON, ONTARIO, N6A 3A1
TEL: 519-204-6510

PLOT ON 18"x24" PAPER TO SCALE 1:300

Surveyed By : MK	Checked By : DB
Drawn By : rc/SM	Date : OCTOBER 03, 2022
	MTE File No : 44420-121