

REQUIRE THIS PLAN TO BE DEPOSITED UNDER THE LAND TITLES ACT.  
 DATE: October 22, 2021  
 THOMAS J. STRUBING  
 REPRESENTATIVE FOR LAND REGISTRAR FOR THE LAND TITLES DIVISION OF MIDDLESEX. (No. 333)

PART	LOT	PLAN	P.I.N.
1	PART OF 23	PART OF 08590-0078	PART OF 08590-0078
2	PART OF 22	PART OF 08590-0079	PART OF 08590-0079
3	PART OF 23	PART OF 08590-0078	PART OF 08590-0078
4	PART OF 22	PART OF 08590-0079	PART OF 08590-0079
5	PART OF 23	PART OF 08590-0078	PART OF 08590-0078
6	PART OF 22	34M-19	34M-19
7	PART OF 23	PART OF 08590-0079	PART OF 08590-0079
8	PART OF 22	PART OF 08590-0078	PART OF 08590-0078
9	PART OF 23	PART OF 08590-0078	PART OF 08590-0078
10	PART OF 22	PART OF 08590-0078	PART OF 08590-0078
11	PART OF 23	PART OF 08590-0078	PART OF 08590-0078
12	PART OF 22	PART OF 08590-0079	PART OF 08590-0079

PARTS 1, 3, 5, 7, 8, 10 AND 11 COMPRISE ALL OF PIN 08590-0078.  
 PARTS 2, 4, 6, 9 AND 12 COMPRISE ALL OF PIN 08590-0079.

**PLAN OF SURVEY**  
 OF ALL OF  
**LOTS 22 AND 23**  
**PLAN 34M-19**  
 (FORMERLY TOWN OF STRATHROY)  
 IN THE  
**MUNICIPALITY OF**  
**STRATHROY-CARADOC**  
 COUNTY OF MIDDLESEX

SCALE 1:300  
 0 5 10 20  
 METRES  
 FEET

2021  
 ARCHIBALD, GRAY & MCKAY LTD.  
 ONTARIO LAND SURVEYORS

**SURVEYOR'S CERTIFICATE:**  
 I CERTIFY THAT:  
 1) THIS SURVEY AND PLAN ARE CORRECT AND IN ACCORDANCE WITH THE SURVEYORS ACT, THE SURVEYORS ACT AND THE LAND TITLES ACT AND THE REGULATIONS MADE UNDER THEM.  
 2) THE SURVEY WAS COMPLETED ON THE 26th DAY OF SEPTEMBER, 2021.

October 22, 2021  
 DATE  
 THOMAS J. STRUBING  
 ONTARIO LAND SURVEYOR

- LEGAL LEGEND**
- DENOTES MONUMENT FOUND
  - DENOTES MONUMENT PLANTED
  - SB DENOTES STANDARD IRON BAR
  - AGM DENOTES ARCHIBALD, GRAY & MCKAY LTD., O.L.S.'S
  - SER DENOTES SOUTH OF THE EGRESS ROAD
  - Z DENOTES SOUTH
  - E DENOTES EAST
  - W DENOTES WEST
  - P1 DENOTES PLAN 34M-19
  - P2 DENOTES PLAN 34M-19
  - P3 DENOTES PLAN 33R-18173
  - P4 DENOTES PLAN 34M-19
  - P5 DENOTES PLAN 34M-782

**UTM GRID NOTES**  
 GRIDS: CANADIAN NATIONAL GRID (CGRS) (83N/18S) DERIVED FROM G.N.S.S. OBSERVATIONS AND THE IGA SURVEY STATION NETWORK AND ARE REFERRED TO THE CENTRAL MERIDIAN 81°00' WEST LONGITUDE, ZONE 17.  
 DISTANCES SHOWN ON THIS PLAN ARE GROUND AND CAN BE CONVERTED TO GRID BY MULTIPLYING BY THE COMBINED SCALE FACTOR OF 0.9996024

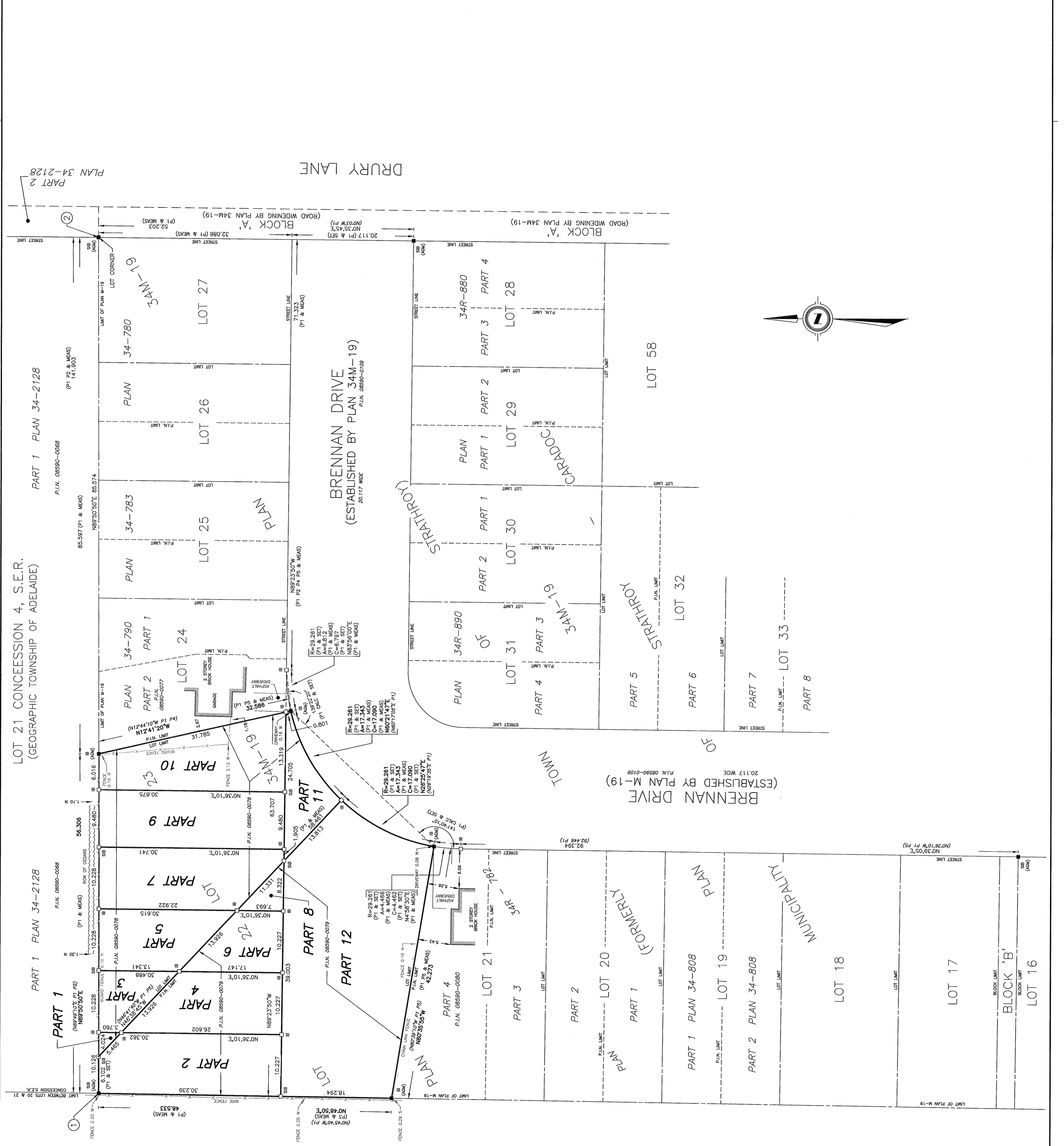
OBSERVED REFERENCE POINTS (ORFPs) DERIVED FROM G.N.S.S. OBSERVATIONS USING REAL TIME NETWORK (RTN), U.T.M. ZONE 17, NA83 (CSRS) EPOCH 2011.0, COORDINATES TO UTM ACCURACY PER NA83 (CSRS) EPOCH 2011.0, UTM ZONE 17

POINT ID	NORTHING	EASTING
ORFP 1	4752725.438	447531.344
ORFP 2	4752725.817	448073.149

FOR BEARING COMPARISONS, A ROTATION OF 0°39'10" CLOCKWISE WAS APPLIED TO BEARINGS ON P1, P2, P4 AND P5. A ROTATION OF 0°01'10" CLOCKWISE WAS APPLIED TO BEARINGS ON P3.

**METRIC:** DISTANCES AND COORDINATES SHOWN ON THIS PLAN DIVIDING BY 0.3048.

**AGM**  
 ARCHIBALD, GRAY & MCKAY LTD.  
 2511 WHITE OAK ROAD, LONDON, ON, N6E 2Z9  
 PHONE: 519-885-5300 FAX: 519-885-5303  
 EMAIL: info@agm.on.ca WEB: www.agm.on.ca  
 PLAN NO: 81-5694-Z  
 DRAWN BY: LIS  
 CHECKED BY: LIS  
 FILE NO: STR-019-0-17  
 PROJECT: C:\Users\lstrubing\Documents\STR-019-0-17\001\STR019017.dwg



**LOT 20 CONCESSION 4, S.E.R.**  
 (GEOGRAPHIC TOWNSHIP OF ADELAIDE)  
 PART 5 PLAN 33-18173  
 P.I.N. 08590-0299

**LOT 21 CONCESSION 4, S.E.R.**  
 (GEOGRAPHIC TOWNSHIP OF ADELAIDE)  
 PART 1 PLAN 34-2128  
 P.I.N. 08590-0068

**LOT 22 CONCESSION 4, S.E.R.**  
 (GEOGRAPHIC TOWNSHIP OF ADELAIDE)  
 PART 1 PLAN 34-2128  
 P.I.N. 08590-0068

**LOT 23 CONCESSION 4, S.E.R.**  
 (GEOGRAPHIC TOWNSHIP OF ADELAIDE)  
 PART 1 PLAN 34-2128  
 P.I.N. 08590-0068

**LOT 24 CONCESSION 4, S.E.R.**  
 (GEOGRAPHIC TOWNSHIP OF ADELAIDE)  
 PART 1 PLAN 34-2128  
 P.I.N. 08590-0068

**LOT 25 CONCESSION 4, S.E.R.**  
 (GEOGRAPHIC TOWNSHIP OF ADELAIDE)  
 PART 1 PLAN 34-2128  
 P.I.N. 08590-0068

**LOT 26 CONCESSION 4, S.E.R.**  
 (GEOGRAPHIC TOWNSHIP OF ADELAIDE)  
 PART 1 PLAN 34-2128  
 P.I.N. 08590-0068

**LOT 27 CONCESSION 4, S.E.R.**  
 (GEOGRAPHIC TOWNSHIP OF ADELAIDE)  
 PART 1 PLAN 34-2128  
 P.I.N. 08590-0068

**LOT 28 CONCESSION 4, S.E.R.**  
 (GEOGRAPHIC TOWNSHIP OF ADELAIDE)  
 PART 1 PLAN 34-2128  
 P.I.N. 08590-0068

**LOT 29 CONCESSION 4, S.E.R.**  
 (GEOGRAPHIC TOWNSHIP OF ADELAIDE)  
 PART 1 PLAN 34-2128  
 P.I.N. 08590-0068

**LOT 30 CONCESSION 4, S.E.R.**  
 (GEOGRAPHIC TOWNSHIP OF ADELAIDE)  
 PART 1 PLAN 34-2128  
 P.I.N. 08590-0068

**LOT 31 CONCESSION 4, S.E.R.**  
 (GEOGRAPHIC TOWNSHIP OF ADELAIDE)  
 PART 1 PLAN 34-2128  
 P.I.N. 08590-0068

**LOT 32 CONCESSION 4, S.E.R.**  
 (GEOGRAPHIC TOWNSHIP OF ADELAIDE)  
 PART 1 PLAN 34-2128  
 P.I.N. 08590-0068

**LOT 33 CONCESSION 4, S.E.R.**  
 (GEOGRAPHIC TOWNSHIP OF ADELAIDE)  
 PART 1 PLAN 34-2128  
 P.I.N. 08590-0068

**LOT 34 CONCESSION 4, S.E.R.**  
 (GEOGRAPHIC TOWNSHIP OF ADELAIDE)  
 PART 1 PLAN 34-2128  
 P.I.N. 08590-0068