

**NOTE:**  
ALL STORM SEWERS & CATCHBASIN LEADS TO BE INSULATED AS PER THE INSULATION DETAIL ON SHEET 3.

**CBMH7 NOTE:**  
ORIFICE PLATE TO BE INSTALLED ON NW INV. OF MAINTENANCE HOLE. SEE DETAIL ON THIS SHEET.

**OQS NOTE:**  
OQS - OIL GRIT SEPARATOR - A STORMCEPTOR EF MODEL EF-4 (FORTERRA) IS TO BE INSTALLED OR APPROVED EQUIVALENT.

STORM MH DATA				
MH#	INVERT LOCATION	INVERT ELEV.	LID ELEV.	DIAMETER
R1	NORTH WEST	243.625	245.01	1200
	SOUTH WEST	243.625		
	SOUTH EAST	243.615		
R2	NORTH WEST	243.384	244.73	1500
	SOUTH WEST	243.374		
	NORTH EAST	243.326	244.85	1800
R3	SOUTH EAST	243.326		
	NORTH WEST	243.316		
	NORTH EAST	243.055	245.30	1800
R4	NORTH WEST	243.045		
	SOUTH EAST	243.061	246.74	2400
	SOUTH WEST	242.951		
R5	NORTH EAST	242.934	246.68	2400
	SOUTH EAST	242.924		
	WEST	242.924		
R6	NORTH EAST	242.974	245.25	Stormceptor EF-4
	SOUTH WEST	243.074		
	SOUTH EAST	243.539	244.82	1200
CBMH1	SOUTH EAST	243.529		
	NORTH WEST	243.455	244.65	1200
	SOUTH EAST	243.445		
CBMH2	NORTH WEST	243.455	244.65	1200
	SOUTH EAST	243.445		
	SOUTH WEST	243.449	244.43	1200
CBMH3	NORTH WEST	243.631	244.78	1200
	SOUTH WEST	243.449		
	SOUTH EAST	243.428	244.35	1500
CBMH4	NORTH WEST	243.418		
	NORTH WEST	243.157	244.55	1500
	NORTH WEST	243.147		
CBMH5	SOUTH EAST	243.090	244.75	1500
	WEST	243.080		
	NORTH WEST	243.680	245.09	600x600
CB1	NORTH WEST	243.680	245.09	600x600
	NORTH EAST	243.669	244.80	600x600

SANITARY MH DATA				
MH#	INVERT	INVERT ELEV.	LID ELEV.	DIAMETER
S1	NORTH EAST	242.759	245.03	1200
	SOUTH WEST	242.548	245.11	1200
	NORTH WEST	242.748		
S2	SOUTH EAST	242.498		
	SOUTH EAST	242.856	245.23	1200
	NORTH WEST	242.173	244.85	1200
S3	SOUTH EAST	242.143		
	NORTH WEST	241.816	244.87	1200
	SOUTH	241.786		
S4	NORTH	241.600	244.90	
	SOUTH	241.786		
S5	NORTH WEST	241.816	244.87	1200
	SOUTH	241.786		
Ex MH	NORTH	241.600	244.90	

IF THERE ARE ANY DISCREPANCIES IN LID ELEVATIONS, THE GRADING PLAN SHALL TAKE PRECEDENCE.

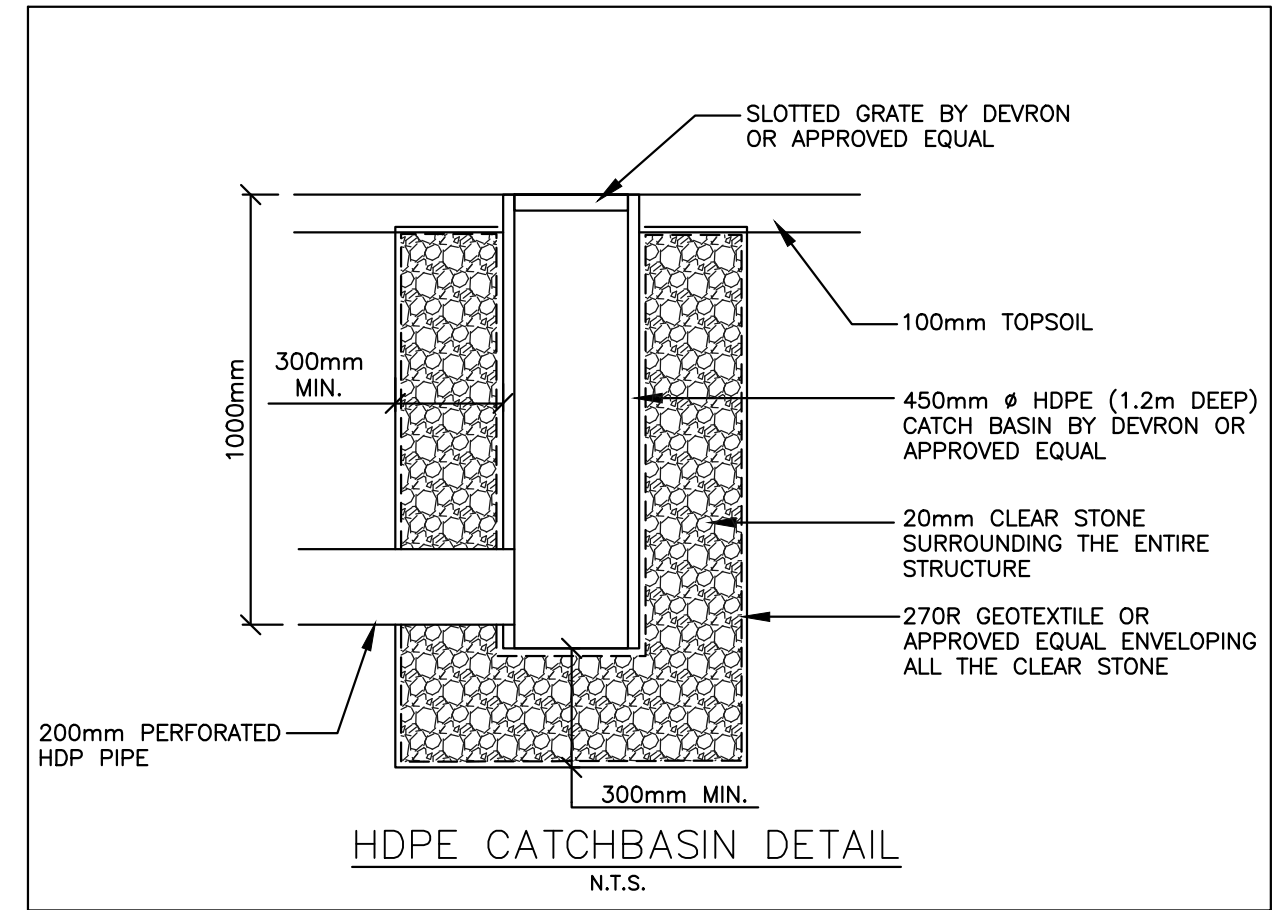
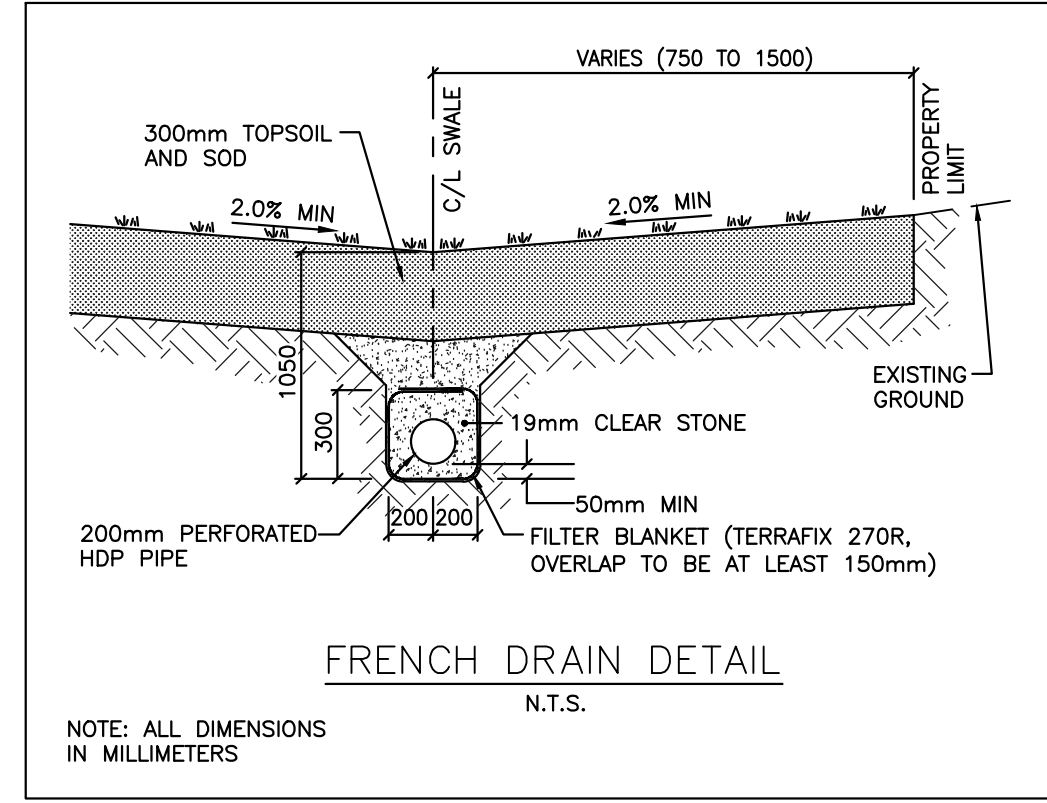
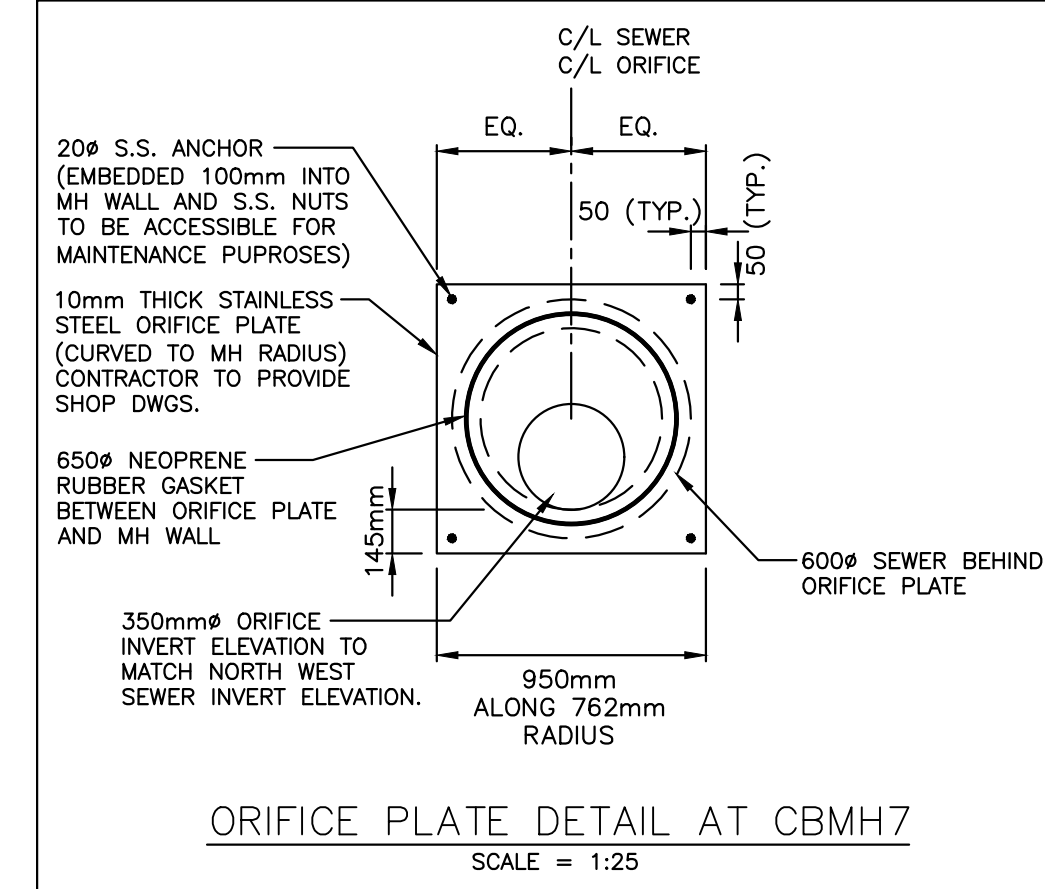
IF THERE ARE ANY DISCREPANCIES IN LID ELEVATIONS, THE GRADING PLAN SHALL TAKE PRECEDENCE.

**LEGEND:**

- PROPOSED MANHOLE
- EX. MANHOLE
- CB PROPOSED CATCHBASIN
- PROPOSED HEADWALL, OPSD-804.03
- HDPE-CB PROPOSED 450mm HDPE CATCHBASIN BY DEVRON (OR APPROVED EQUAL)
- CBMH PROPOSED CATCHBASIN MANHOLE
- C/CB/MH PROPOSED CURB INLET CATCHBASIN MANHOLE
- EX. CATCHBASIN
- DEVELOPMENT BOUNDARY
- EX. STORM SEWER
- PROPOSED STORM SEWER
- 200# PERFORATED HDPE PIPE
- EX. SANITARY SEWER
- PROPOSED SANITARY SEWER
- EX. WATERMAIN
- PROPOSED WATERMAIN
- PROPOSED WATER VALVE
- WATER METER AND BACKFLOW PREVENTER
- PROPOSED WATER SERVICE CURB STOP AND SERVICE BOX
- EX. FIRE HYDRANT
- EX. FIRE HYDRANT
- 59 PROPOSED UNIT NUMBERS
- LIGHT DUTY SILT FENCE
- DENOTES SUPER-ELEVATED OPSD-600.100 CURB & GUTTER.

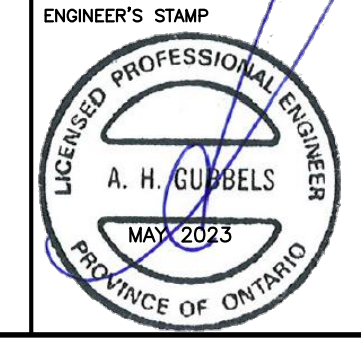
**CURB NOTES:**  
ALL CURB & GUTTER WITHIN THE DEVELOPMENT TO BE OPSD-600.100 STANDARD PROFILE UNLESS NOTED OTHERWISE.

100mm SUBDRAINS TO BE INSTALLED UNDER ALL LOW SIDE CURBS



Z:\LD-00237 - 22.06.2023 - ADELAIDE - MT BRYDGES DETAIL DESIGN\CAD\CAD\3D\SHEET FILES\00237-SERVICING\211222.DWG

EXISTING SERVICES	DRAWING #, SOURCE	DATE	CONSTRUCTED SERVICES	COMPLETION	DETAILS	No.	REVISIONS	DATE	CONSULTANT	CONSULTANT OR DIVISION	ENGINEER'S STAMP	SCALE	TITLE	PROJECT No.	SHEET No.
					DESIGN SB								ALLEN ROAD, MOUNT BRYDGES GOLD LEAF PROPERTIES INC. <b>SERVICING PLAN</b>	LD-00237	1 of 3
					DRAWN BY SB										
					CHECKED AH										
					APPROVED AG										
					DATE 2021-12-24										



SCALE: 1:500

TITLE: ALLEN ROAD, MOUNT BRYDGES  
GOLD LEAF PROPERTIES INC.  
**SERVICING PLAN**

PROJECT No. LD-00237  
SHEET No. 1 of 3  
PLAN FILE No.







**WATERMAIN NOTES**

- ALL WATERMAIN PIPE OVER 300mm DIA. TO BE POLYVINYL CHLORIDE (PVC) C905, CLASS 165, DR25. ALL WATERMAIN PIPE UP TO AND INCLUDING 300mm DIA. TO BE POLYVINYL CHLORIDE (PVC) C900, CLASS 150 DR18. DUCTILE IRON (D.I.) CL51 AND RESPECTIVELY CL52 C/W POLYETHYLENE WRAP MAY BE USED IF APPROVED BY THE MUNICIPALITY OF STRATHROY-CARADOC.
- ALL WATERMAIN TO HAVE 1.7m TO 1.9m COVER.
- WHERE COVER TO WATER SERVICES IS LESS THAN 1.5m, THE SERVICE SHALL BE ADEQUATELY INSULATED OVER THE AFFECTED LENGTH OF SERVICE, USING STYROFOAM HI-BRAND INSULATION OR APPROVED EQUIVALENT, 25mm THICK & 1.22m WIDE.
- WHERE ANY WATER SERVICE CONNECTION IS REQUIRED TO BE MADE FOLLOWING THE CONSTRUCTION OF CURB, GUTTER, CONCRETE SIDEWALKS AND/OR WEARING SURFACE COAT OF ASPHALT ON ANY STREET IN A NEW DEVELOPMENT, SUCH WATER SERVICE CONNECTION SHALL NOT BE MADE USING "OPEN CUT" METHODS BUT SHALL BE MADE USING DRILLING OR BORING TECHNIQUES AND IN SUCH A MANNER AS TO ELIMINATE THE POSSIBILITY OF SETTLEMENT OF SUCH CURB, GUTTER, CONCRETE SIDEWALK OR WEARING SURFACE COAT OF ASPHALT; IT BEING UNDERSTOOD THAT THIS POLICY SHALL APPLY EXCEPT WHERE, IN THE OPINION OF THE CITY ENGINEER, GROUND CONDITIONS ARE SUCH THAT THE USE OF DRILLING OR BORING METHODS BECOME UNREASONABLE OR UNECONOMICAL.
- ALL WATERMAIN MATERIAL AND CONSTRUCTION SHALL CONFORM TO THE CURRENT MUNICIPALITY OF STRATHROY-CARADOC STANDARDS FOR SEWER AND WATER.
- ALL SERVICE CONNECTIONS TO BE 38mm DIAMETER PEX UNLESS NOTED OTHERWISE. GROUNDING ROD TO BE INSTALLED AT WATER METER IF CROSS-LINKED POLYETHYLENE IS USED.
- MECHANICAL RESTRAINT JOINTS TO BE USED AT ALL FITTINGS, TEES, BENDS, DEAD ENDS AND HYDRANTS IN ACCORDANCE WITH THE MUNICIPALITY OF STRATHROY-CARADOC WATERWORKS DESIGN AND CONSTRUCTION STANDARDS (LATEST REVISION). FOR WATERMANS LARGER THAN 300mm OR INSTALLATION SITUATIONS NOT INCLUDED IN THE WATERWORKS DESIGN AND CONSTRUCTION STANDARDS, THE CONTRACTOR SHALL SUBMIT SHOP DRAWINGS WITH RESTRAINT AS RECOMMENDED BY THE PIPE MANUFACTURER FOR THE REVIEW AND APPROVAL OF THE MUNICIPALITY OF STRATHROY-CARADOC.
- ALL FIRE HYDRANTS SHALL BE 3-WAY HYDRANTS WITH STORZ CONNECTION OPENING COUNTER CLOCKWISE.
- ALL WATERMAIN VALVES SHALL BE GATE VALVES MANUFACTURED TO AWMA C-500 AND EPOXY COATED TO AWMA C550. ALL VALVES TO OPEN COUNTER CLOCKWISE.
- INSTALLATION, HYDROSTATIC TESTING, SWABBING, FLUSHING AND DISINFECTION SHALL BE DONE IN ACCORDANCE WITH THE MUNICIPALITY OF STRATHROY-CARADOC GENERAL SPECIFICATIONS FOR WATER DISTRIBUTION SYSTEMS.

**SEWER NOTES**

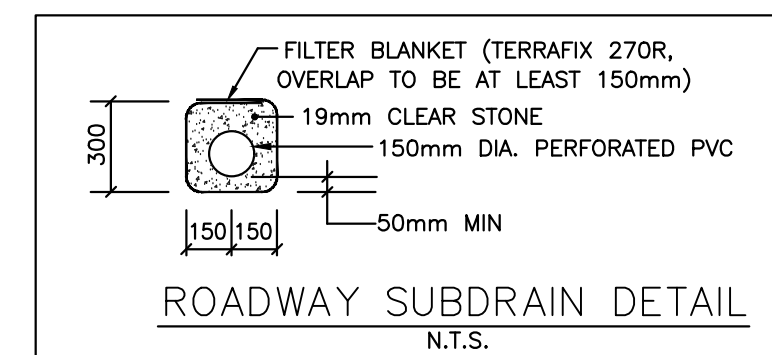
- ALL SEWER INSTALLATION SHALL BE IN ACCORDANCE WITH CURRENT MUNICIPALITY OF STRATHROY-CARADOC STANDARDS AND THE PLUMBING CODE.
- ALL SEWERS WITH DEPTHS UP TO 4.5m TO BE PVC SDR35 (OR APPROVED EQUAL) WITH TYPE 1 BEDDING. SEWERS WITH DEPTHS EXCEEDING 4.5m TO BE PVC SDR35 (OR APPROVED EQUAL) WITH TYPE 2 BEDDING.
- REMOVE ALL TRENCH WATER WHEN PIPE INSTALLATION IS IN PROGRESS.
- PULL THE MANDRELL (PIG) THROUGH THE PVC SEWERS IN THE PRESENCE OF THE ENGINEER.
- ALL PDC'S SHALL BE INSTALLED AT A MINIMUM OF 2% GRADE TO 1.5m INSIDE BUILDING WALL. ALL WATER SERVICES SHALL BE INSTALLED TO 1.0m OUTSIDE BUILDING WALL. ALL SERVICES SHALL BE MARKED WITH A PAINTED 50x100 MARKER FROM INVERT TO 1m ABOVE GRADE.
- RECOMMENDED PAVEMENT STRUCTURE:  
**PRIVATE ROAD CONSTRUCTION**  
 300mm GRANULAR 'B' - 100% SPMD  
 150mm GRANULAR 'A' - 100% SPMD  
 40mm HL-8 - 97% MARSHALL  
 30mm HL-3 - 97% MARSHALL  
 OPSS FORMS 310 & 1150  
**MUNICIPAL ROAD**  
 600mm GRANULAR 'B' - 100% SPMD  
 150mm GRANULAR 'A' - 100% SPMD  
 135mm HL-8 - 97% MARSHALL  
 45mm HL-3 - 97% MARSHALL  
**DRIVEWAYS & PARKING LOT**  
 300mm GRANULAR 'B' - 100% SPMD  
 150mm GRANULAR 'A' - 100% SPMD  
 40mm HL-8 - 97% MARSHALL  
 40mm HL-3 - 97% MARSHALL  
**SIDEWALKS**  
 100mm CONCRETE  
 100mm GRANULAR 'A' - 100% SPMD  
**BOULEVARDS**  
 300mm TOPSOIL AND SOD  
**RESTORATION NOTE:**  
 ALL DISTURBED AREA TO BE RESTORED TO EXISTING CONDITION OR BETTER AS PER MUNICIPAL STANDARDS. MILL EXISTING ASPHALT 500mm WIDE BY 50mm DEEP ADJACENT TO ALL ASPHALT AND CURB RESTORATION.  
**ALL SANITARY PDC'S SHALL BE CONNECTED TO THE MAINLINE SEWER WITH A 'Y' CONNECTION AND A LONG SWEEP BEND (OPSD 1006.010).**  
**THE MINIMUM DEPTH OF STORM AND SANITARY SEWER SHALL BE 1.5m FROM THE FINISHED GROUND ELEVATION TO THE OVERT OF THE PIPE. WHERE THE MINIMUM CANNOT BE ACHIEVED, STYROFOAM HI-BRAND INSULATION OR APPROVED EQUIVALENT IS REQUIRED.**

**NOTES TO CONTRACTOR**

- CONTRACTOR TO VERIFY LOCATION OF ALL EXISTING UTILITIES PRIOR TO CONSTRUCTION.
- ALL ORGANIC, UNSTABLE OR UNSUITABLE MATERIALS BENEATH THE ROAD ALLOWANCES OR HOUSE FOUNDATIONS MUST BE REMOVED AND THESE AREAS BACKFILLED WITH AN APPROVED FILL MATERIAL, ALL TO THE SATISFACTION OF THE GEOTECHNICAL ENGINEER.
- THE CONTRACTOR IS TO NOTIFY LDS ENGINEERING INC. AND THE MUNICIPALITY OF STRATHROY-CARADOC 48 HOURS PRIOR TO COMMENCING CONSTRUCTION WITHIN THE EXISTING ROAD ALLOWANCE.
- WITHIN THE LIMITS OF THE EXISTING ROAD ALLOWANCE, THE CONTRACTOR SHALL REMOVE ALL CONCRETE, ASPHALT, UNUSED AND UNSUITABLE MATERIAL AS REQUIRED AND DISPOSE OFF SITE.
- WHERE ADJACENT MANHOLES ARE LOCATED IN CLOSE PROXIMITY TO ONE ANOTHER, THE AREA BETWEEN THE ADJACENT MANHOLES SHALL BE BACKFILLED IN ACCORDANCE WITH THE SPECIFICATIONS IN THE FOLLOWING TABLE:  

DISTANCE BETWEEN ADJACENT MANHOLES	MATERIAL
600mm OR LESS	CONCRETE OR CRUSHED STONE
600mm TO 2400mm	GRANULAR MATERIALS
MORE THAN 2400mm	APPROVED NATIVE MATERIAL

 THE ABOVE-NOTED BACKFILL SHALL BE COMPACTED TO THE STANDARD PROCTOR DENSITY SPECIFIED IN THE SOILS REPORT, OR AS APPROVED BY THE MUNICIPALITY ENGINEER.
- THE LIDS OF ALL RYCB'S ARE TO BE INSTALLED SO THAT THE INLET GRATES ARE LOCATED ENTIRELY ON ONE PROPERTY, TO AVOID INTERFERENCE BY FENCES.
- ALL SUBSTITUTIONS MUST BE APPROVED BY THE ENGINEER.
- ON EXCAVATIONS IN WHICH EXISTING CURBS ARE AFFECTED, GRAN B SHALL EXTEND 300mm BEHIND THE BACK OF CURBS AS PART OF THE RESTORATION.
- ALL MANHOLES ARE TO BE SET TO BASE COAT ELEVATION. THE MANHOLES WILL BE RAISED TO TOP COAT ELEVATION AFTER ALL UNITS HAVE BEEN CONSTRUCTED.
- THE ACCURACY OF THE SURFACE AND SUBSURFACE DETLS SHOWN ON THE DRAWINGS ARE NOT GUARANTEED. THE CONTRACTOR SHALL INVESTIGATE AND VERIFY FOR HIMSELF WHETHER THE INFORMATION IS CORRECT AND COMPLETE.
- REFER TO SITE PLAN PREPARED BY LDS ENGINEERING INC. FOR LAYOUT OF CURBS, RAMPS, SIDEWALKS, PARKING AND BUILDINGS.

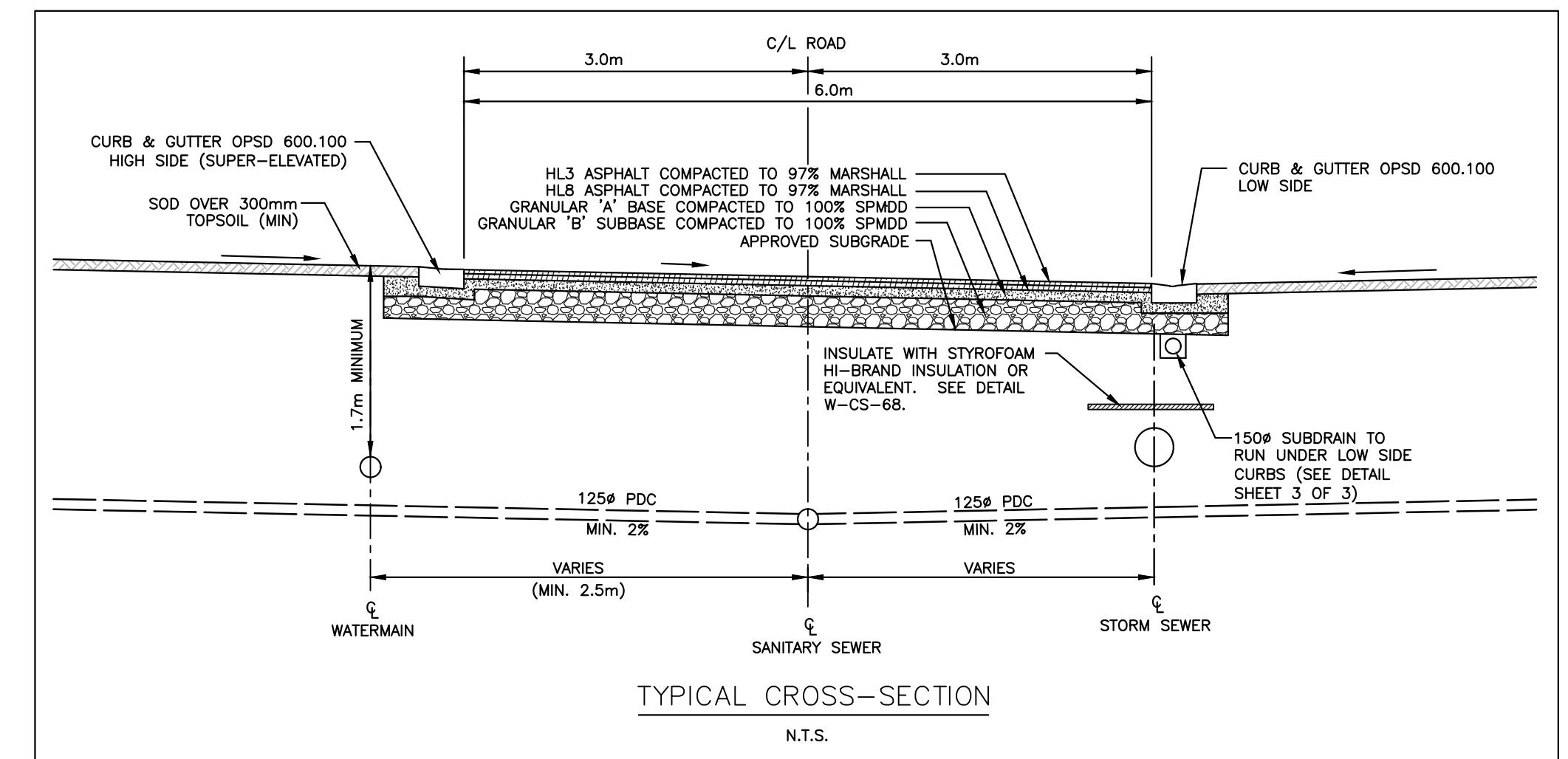
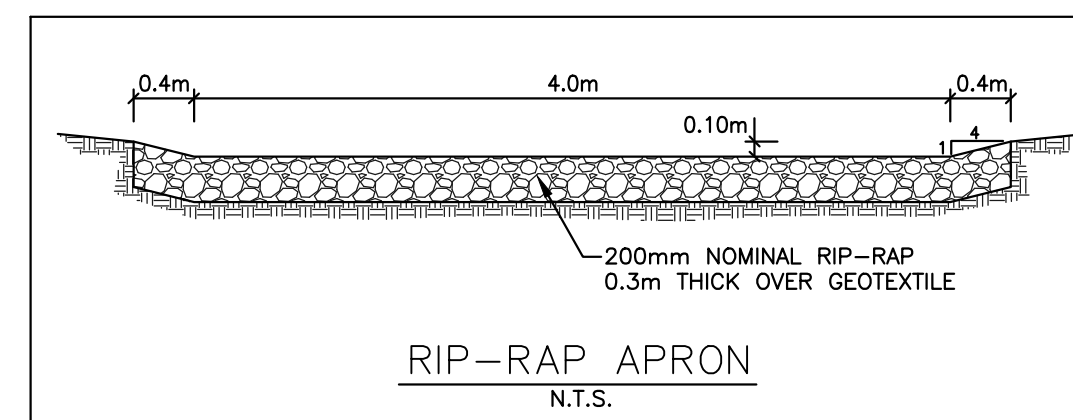
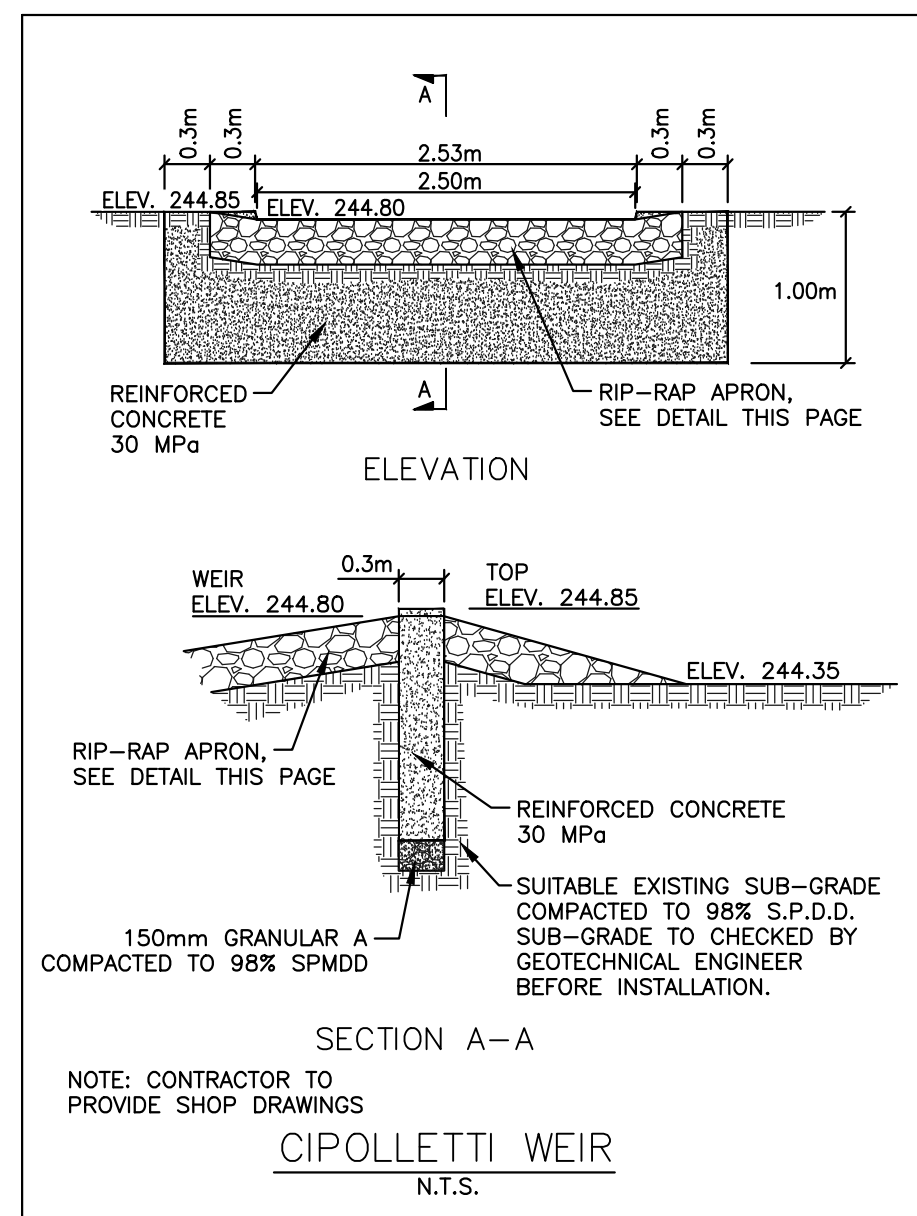


THE FOLLOWING OPSD STANDARDS SHALL BE USED ON THIS DEVELOPMENT:

OPSD-400.020	CATCHBASIN, CAST IRON, FRAME AND FLAT SQUARE GRATE
OPSD-400.090	CATCHBASIN, CAST IRON CURB INLET OVERFLOW PLATE
OPSD-401.010	MAINTENANCE HOLE, CAST IRON COVER & SQUARE FRAME
OPSD-404.020	SAFETY GRATING, ALUMINUM FOR CIRCULAR MANHOLES
OPSD-405.010	MANHOLE STEPS-HOLLOW
OPSD-405.020	MANHOLE STEPS-SOLID
OPSD-600.040	CONCRETE BARRIER CURB WITH STANDARD GUTTER
OPSD-600.100	CONCRETE SEMI-MOUNTABLE CURB WITH NARROW GUTTER
OPSD-604.010	90° CONCRETE OUTLET FOR CONCRETE CURB AND GUTTER
OPSD-701.010	PRECAST MAINTENANCE MANHOLE 1200mm DIA.
OPSD-701.011	PRECAST MAINTENANCE MANHOLE 1500mm DIA.
OPSD-701.012	PRECAST MAINTENANCE MANHOLE 1800mm DIA.
OPSD-701.013	PRECAST MAINTENANCE MANHOLE 2400mm DIA.
OPSD-701.021	MAINTENANCE HOLE BENCHING AND PIPE OPENING DETAILS
OPSD-701.030	PRECAST CONCRETE MANHOLE COMPONENTS 1200mm DIA.
OPSD-701.040	PRECAST CONCRETE MANHOLE COMPONENTS 1500mm DIA.
OPSD-701.050	PRECAST CONCRETE MANHOLE COMPONENTS 1800mm DIA.
OPSD-701.060	PRECAST CONCRETE MANHOLE COMPONENTS 2400mm DIA.
OPSD-705.010	PRECAST CONCRETE CATCHBASIN 600 x 600, DEPTH-4.0m MAX.
OPSD-705.030	PRECAST CONCRETE DITCH INLET 600 x 600
OPSD-708.010	CATCHBASIN CONNECTION RIGID PIPE SEWER
OPSD-708.030	CATCHBASIN CONNECTION FLEXIBLE PIPE SEWER
OPSD-804.030	CONCRETE HEADWALL - FOR PIPES LESS THAN 900mm DIAMETER
OPSD-1006.010	SEWER SERVICE CONNECTIONS FOR MAIN PIPE SEWER

**NOTE:**

- TRENCH CONSTRUCTION IS TO BE IN ACCORDANCE WITH THE LATEST SPECIFICATIONS REGARDING THE TRENCH WIDTH. (Ont. Reg. 213/91).
- TYPICAL CROSS SECTIONS ARE FOR TYPE 1 OR 2 SOILS. EXCAVATION WITHIN TYPE 3 SOILS IS TO BE CARRIED OUT USING SIDE SLOPES OF 1:1 FROM THE BOTTOM OF THE EXCAVATION. SIDE SLOPES OF 3:1 OR FLATTER ARE TO BE USED FOR EXCAVATIONS IN TYPE 4 SOILS.
- 19mm CLEAR STONE BEDDING ENCLOSED WITH A SUITABLE GEOTEXTILE (TERRAFIX 270R OR APPROVED EQUAL, IN ACCORDANCE WITH OPSS 1860.) TO BE USED WHERE HYDRAULIC GRADIENT CONDITIONS ARE ANTICIPATED WITH STANDARD BEDDING AS NOTED ON THE PLAN AND PROFILE DRAWINGS BEING USED IN ALL OTHER AREAS, ALL AS RECOMMENDED BY THE GEOTECHNICAL ENGINEER.



Z:\LD-00237 - 21.06.2024 - MT PERTONIS DETAIL DESIGN\ROAD\CAD\3D SHEET FILES\00237 - SERVING\211222.DWG

EXISTING SERVICES	DRAWING #, SOURCE	DATE	CONSTRUCTED SERVICES	COMPLETION	DETAILS	No.	REVISIONS	DATE	CONSULTANT	CONSULTANT OR DIVISION	ENGINEER'S STAMP	SCALE	TITLE	PROJECT No.
					DESIGN	SB						HORZ - 1 : 1500 15 0 30m	ALLEN ROAD, MOUNT BRYDGES GOLD LEAF PROPERTIES INC. GENERAL NOTES AND TYPICAL DETAILS	LD-00237 SHEET No. 3 of 3 PLAN FILE No.
				DRAWN BY	SB									
				CHECKED	AH									
				APPROVED	AG									
				DATE	2021-12-24									

