



Municipality of Strathroy-Caradoc
Strathroy-Caradoc Fire Service Advisory Committee
Agenda

Wednesday, November 20, 2024

1:00 p.m.

Committee Room (2nd Floor) - In Person

Strathroy-Caradoc Municipal Office

52 Frank Street

Strathroy, Ontario

Pages

1. Roll Call

2. Declaration of Pecuniary Interest

3. Call to Order/Approve Agenda

Recommendation

THAT: the November 20, 2024 Fire Advisory Committee Agenda be approved as circulated.

4. Approval of Minutes

4.1 Fire Advisory Committee Meeting Minutes - October 16, 2024

1

Recommendation

THAT: the Fire Advisory Committee Meeting Minutes of October 16, 2024 be approved as written.

5. Correspondence and Notifications

Recommendation

THAT: the committee receive communication item 5.1 for information.

5.1 Safe Community Project Assist Campaign

5

6. Department Reports

6.1 Station 2 Location Study - FIRE-2024-12

7

Recommendation

THAT: The Committee receives the Station 2 Fire Location Study for information.

7. Scheduling of Meetings

- Wednesday, January 15, 2025 @ 1:00 p.m.

8. Adjournment

Recommendation

THAT: the November 20, 2024 Fire Advisory Committee Meeting adjourn at

_____.

Municipality of Strathroy-Caradoc
Strathroy-Caradoc Fire Advisory Committee
Minutes

Wednesday, October 16, 2024

1:00 p.m.

Committee Room (2nd Floor) - In Person
Strathroy-Caradoc Municipal Office
52 Frank Street
Strathroy, Ontario

Present: Deputy Mayor Mike McGuire, Chair
Councillor Sandi Hipple
Member Scott Barker
Vice-Chair Jane Bruinink
Mayor Colin Grantham

Absent with Notice: Councillor John Brennan

Also Present: Brent Smith, Director of Fire Services/Fire Chief
Jennifer Pereira, Deputy Clerk (Recorder)
Maddy Alcainho, Fire Service Co-ordinator

1. Roll Call

2. Declaration of Pecuniary Interest

Mayor Grantham declared a conflict regarding the compensation to firefighters.

3. Call to Order/Approve Agenda

Moved by Councillor Sandi Hipple

Seconded by Vice-Chair Jane Bruinink

THAT: the October 16, 2024 Fire Advisory Committee Agenda be approved as circulated.

Carried

4. Approval of Minutes

4.1 Fire Advisory Committee Meeting Minutes of September 18, 2024

Chief Smith shares with the committee that recruitment has been posted for all stations and the total number of applicants was 26 for Strathroy, 9 for Mount Brydges and 4 for Melbourne.

He indicates that an information night is scheduled for tonight to discuss the details on being a part of Fire Services. He adds that performance testing will be on October 28, and then they will move to interviews on November 6 and 7, then will be selecting candidates on Nov 27 to commence orientation. Onboarding will commence and the start date for the training will be on January 8, 2025. He shares that he is happy with the number of applicants and looking to recruit a total of 16.

Chief Smith invites the committee to the Awards and Recognition Night on November 21 @ 6:30p.m. at the Caradoc Community Centre.

Chief Smith recognizes and commends Vice Chair Brunink's son on receiving the Kings Coronation Metal for Firefighter Health and Safety.

Moved by Member Scott Barker

Seconded by Councillor Sandi Hipple

THAT: the Fire Advisory Committee Meeting Minutes of September 18, 2024 be approved as written.

Carried

5. Correspondence and Notifications

Chair McGuire spoke to the committee briefly about the Procedure By-law and the Code on Conduct & Conflicts of Interest.

Chief Smith shares with the committee the Fire Service Legislative Requirements, NFPA 1720 and the Fire Service Review.

Chief Smith indicates that retention of firefighters has been a struggle. Many do all the training and move on to a full-time fire service.

Member Barker asks Chief Smith what the yearly cost of a full-time firefighter. Chief Smith indicates that it would cost \$125,000 per year including benefits and pension. Councillor Hipple expresses while that is a large cost, the cost of training overall and not retaining the individual could be costing more.

Chair McGuire offers to the committee some proposed items for future conversations of the committee, and they are as follows:

- Part time vs Volunteer
- Fire Fighters - Are they paid employees
- Remuneration for the Fire Services - earned in points
- General Budget Overview
- Fire Master Plan
- Statistics - Do they have value
- Compensation to the Municipality for completed training
- Composite Fire Department

Moved by Councillor Sandi Hipple

Seconded by Mayor Colin Grantham

THAT: Items 5.1 to 5.5 be received for information.

Carried

Moved by Mayor Colin Grantham

Seconded by Vice-Chair Jane Bruinink

THAT: an information report come back to the committee regarding the Ward 2 Fire Hall Locations.

Carried

Moved by Councillor Sandi Hipple

Seconded by Member Scott Barker

THAT: the committee direct the Chief to bring back a report regarding staffing on the Fire Prevention Officer for discussion at a future meeting.

Carried

5.1 By-law 97-18 - Procedure By-law

5.2 Code of Conduct and Conflicts of Interest

5.3 Fire Legislative Requirements

5.4 NFPA 1720

5.5 Fire Service Review

6. Scheduling of Meetings

Moved by Mayor Colin Grantham

Seconded by Councillor Sandi Hipple

THAT: the Fire Advisory Committee receive the Schedule of 2024-2025 Meeting Dates as information.

Carried

7. Adjournment

Moved by Vice-Chair Jane Bruinink

Seconded by Member Scott Barker

THAT: the October 16, 2024 Fire Advisory Committee Meeting adjourn at 2:28 p.m.

Carried

Chair

Vice-Chair



September 9, 2024

Maddy Alcaidinho, Fire Service Coordinator
Strathroy-Caradoc Fire Department
23 Zimmerman Street,
Strathroy, ON N7G 2G8

Dear Maddy,

We are pleased to inform you that your department has been selected to participate in this year's Safe Community Project Assist campaign.

Safe Community Project Assist provides selected fire departments in Enbridge Gas Inc.'s (Enbridge Gas) service area with funding for purchasing firefighting and carbon monoxide training materials. Since its inception in 2012, Enbridge Gas has generously contributed over 1.8 million dollars to this campaign.

As a recipient of the 2024 Safe Community Project Assist campaign, your department will receive a \$5,000 credit at the Fire Marshal's Public Fire Safety Council's (FMPFSC) Distribution Centre to purchase firefighting and carbon monoxide training materials. The funds must be used by December 20, 2024 or any remaining funds will be directed back to the FMPFSC.

In support of this campaign, participating fire departments are asked to:

1. Complete and return the confirmation of participation form to Scout Golbourn at Scout.golbourn@firesafetycouncil.com by Monday, September 16, 2024.
2. Collaborate with Scout to arrange a media launch and photo opportunity with the fire chief and/or department representatives.
 - Invite local media and your mayor/council members, etc. to attend.
 - We will schedule the attendance of a representative from Enbridge Gas. A representative from the FMPFSC may also be scheduled to attend, pending availability.
3. Provide information required to complete a media advisory and news release developed by Enbridge Gas.
4. Email your media advisory to local media to invite them to attend the launch. Send them your news release and photo if they do not attend.
5. Email your photo and any local media coverage to Scout.golbourn@firesafetycouncil.com.
6. Share your photo on your social media sites. Tag Enbridge Gas using @enbridgegas and use the hashtag #ENBFuelingFutures.

Please contact Scout to place your order or for assistance with selecting your training materials. Orders can also be placed online at www.firesafetycouncil.com. They must be complete and identified as part of Safe Community Project Assist when placing the order. Enter PROA as the purchase order number for online orders.

A large variety of resources are available including products from NFPA, IFSTA, Fire Engineering, Pearson, Jones & Bartlett, Publications Ontario, Action Training and many other recognized publishers of firefighting and carbon monoxide training materials.

Following the return of your confirmation of participation form, Scout will contact you to assist with scheduling your media launch and completing your media advisory and news release. If you have any questions or concerns, please do not hesitate to contact them at Scout.golbourn@firesafetycouncil.com or by phone at 1-866-379-6668 ext. 2.

Sincerely,

A handwritten signature in black ink, appearing to read 'Jamie Kovacs', with a stylized flourish at the end.

Jamie Kovacs
Executive Director
Fire Marshal's Public Fire Safety Council



FIRE SERVICES ADVISORY COMMITTEE REPORT

Meeting Date: November 20, 2024
Department: Fire Department
Report No.: FIRE-2024-12
Submitted by: Brent Smith, Fire Chief
Approved by: Trisha McKibbin, Chief Administrative Officer

SUBJECT: Location Study Station 2.docx

RECOMMENDATION: THAT: The Committee receives the Station 2 Fire Location Study for information.

BACKGROUND:

Requested by Fire Service Advisory Committee requested a Station 2 Fire Location Study be completed and presented for November 20 Committee meeting

COMMENTS:

For the purpose of discussion at Fire Advisory Committee meeting

CONSULTATION:

Previous Fire Location Study Report Template used for discussion
Department senior officers and members

FINANCIAL IMPLICATIONS:

None at this time

ATTACHMENTS:

Station 2 Location Study

Strathroy-Caradoc Fire Department



Station 2 Fire Location Study

Contents

Acronyms	3
Executive Summary	4
Objectives.....	4
Introduction	5
Performance Measures and Standards.....	5
1.1 COMMUNITY OVERVIEW	7
Section 1: Community and Fire Department Overview.....	8
1.1 Community Overview	8
Figure 1a: Middlesex/ Strathroy-Caradoc Map	9
1.2 Fire Department Composition.....	12
1.3 Fire Station Locations.....	12
Figure 1d: SCFD Station Locations with 8-minute Travel Times	13
Figure 1e: 2021 Total Station 2 Calls 3 year Comparison.....	14
Figure 1f: SCFD Station 2 Incident Calls & Assistance to Stations 1 & 3.....	15
Figure 1g: SCFD Station 2 Incident Calls	16
.....	16
1.4 Future Call Volume Expectations	16
Figure 1h: Housing Forecast by Local Municipality	20
Figure 1i: 3 Year comparison Call Volume Projections Mount Brydges Station	19
2.1 Fire Station Review	21
2.2 Station #2 - Overview	21
Figure 2a: SCFD Station 2 Incident Calls	23
Figure 2b: SCFD Station 2 Incident Calls	24
Station #2 - Solutions	25
Figure 2c: 10-Minute Travel Grid from Current Stations	26
Figure 2d: 10-Minute Travel Grid from Two New Stations	27
3.1 Conclusion.....	29
3.2 Phase 2	29

Acronyms

CFAI	Commission on Fire Accreditation International
FD	Strathroy-Caradoc Fire Department
EM&T	Emergency Management & Training Inc.
FUS	Fire Underwriter's Survey
HVAC	Heating, ventilation, and air conditioning
MFP	Master Fire Plan
NFPA	National Fire Protection Association
NIOSH	National Institute for Occupational Safety and Health
NIST	National Institute of Standards and Technology
OFC	Ontario Fire College
OFMEM	Office of the Fire Marshal and Emergency Management
OHSA	Occupational Health and Safety Act
SCPS	Strathroy-Caradoc Police Service
SOG	Standard Operating Guidelines

Executive Summary

This Fire Station Location Study assesses the fire station location and the options for the municipality of Strathroy-Caradoc. The plan assesses present and future population statistics and anticipated growth.

The overall goal of this document is to provide the fire service and the municipality with a comprehensive look at how the current station is meeting the needs of the community and the options that are available. Once the plan is adopted, the next phase is implementation. Implementation will depend on the municipality's resources and ability to move forward with the associated recommendations contained within the document.

Ultimately, all decisions pertaining to the services provided, the staffing, and equipping of the fire service are those of Council.

Objectives

To ensure that the fire service are meeting the needs of the community and their staff, the SCFD recognizes the importance of conducting a review of the Mt. Brydges fire station location as the community grows.

Introduction

Performance Measures and Standards

This study has been based upon (but not limited to) key performance indicators that have been identified in national standards and safety regulations such as:

- Office of the Fire Marshal and Emergency Management's (OFMEM) Public Fire Safety Guidelines.
- *The Fire Prevention and Protection Act* and its subordinate regulations, including the Ontario Fire Code O. Reg. 378/18 Community Risk Assessment.
- Office of the Fire Marshal and Emergency Management's (OFMEM) Integrated Risk Management program.
- The *Ontario Health and Safety Act*, with reference to the National Institute for Occupational Safety and Health (NIOSH).
- Ontario Fire Service – Section 21 Guidelines:
 - The Section 21 Committee is based on Section 21 of the *Ontario Occupational Health and Safety Act* (OHSA). This committee is charged with reviewing industry safety concerns and developing recommended guidelines to reduce injuries for the worker.
- The National Fire Protection Association (NFPA) standards:
 - NFPA 921 – Guide for Fire and Explosion Investigations
 - NFPA 1001 – Standard for Fire Fighter Professional Qualifications
 - NFPA 1002 – Standard for Fire Apparatus Driver/ Operator Professional Qualifications
 - NFPA 1021 – Standard for Fire Officer Professional Qualifications
 - NFPA 1031 – Standard for Professional Qualifications for Fire Inspector and Plan Examiner
 - NFPA 1033 – Standard for Professional Qualifications for Fire Investigator
 - NFPA 1035 – Standard on Fire and Life Safety Educator, Public Information Officer, Youth Fire Setter Intervention Specialist and Youth Fire Setter Program Manager Professional Qualifications
 - NFPA 1041 – Standard for Fire Service Instructor Professional Qualifications
 - NFPA 1061 – Professional Qualifications for Public Safety Telecommunications Personnel

SCFD Station 2 Location Study

- NFPA 1072 – Standard for Hazardous Materials/Weapons of Mass Destruction Emergency Response Personnel Professional Qualifications
 - NFPA 1201 – Standard for Providing Fire and Emergency Services to the Public
 - NFPA 1221 – Standard for the Installation, Maintenance, and Use of Emergency Services Communications Systems
 - NFPA 1500 – Standard on Fire Department Occupational Safety, Health, and Wellness Program
 - NFPA 1521 – Standard for Fire Department Safety Officer Professional Qualifications
 - NFPA 1582 – Standard on Comprehensive Occupational Medical Program for Fire Departments
 - NFPA 1583 – Standard on Health-Related Fitness Programs for Fire Department Members
 - NFPA 1720 – Standard for the Organization and Deployment of Fire Suppression Operations, Emergency Medical Operations and Special Operations to the Public by Volunteer Fire Departments
 - NFPA 1730 – Standard on Organization and Deployment of Fire Prevention Inspection and Code Enforcement, Plan Review, Investigation, and Public Education Operations
 - NFPA 1851 Standard on Selection, Care, and Maintenance of Protective Ensembles for Structural Fire Fighting and Proximity Fire Fighting
 - NFPA 1901 – Standard for Automotive Fire Apparatus
 - NFPA 1911 – Standard for the Inspection, Maintenance, Testing, and Retirement of In-Service Emergency Vehicles
- The Commission on Fire Accreditation International (CFAI), which is a program that promotes fire service excellence by evaluating a fire department based on related National Fire Protection Association standards, local legislation and industry best practices (the parent organization for Commission on Fire Accreditation International is the Centre for Public Safety Excellence).
 - This program has been adopted by many fire departments in Canada as a measure of best practices. Within Ontario, Guelph, Kitchener, Toronto, and Ottawa are just a few fire departments that have obtained accreditation from the Commission on Fire Accreditation International.
 - Fire Underwriters Survey (FUS) technical documents

SECTION 1: COMMUNITY AND FIRE DEPARTMENT OVERVIEW

- 1.1 COMMUNITY OVERVIEW
- 1.2 FIRE DEPARTMENT COMPOSITION
- 1.3 FIRE STATION LOCATIONS
- 1.4 CALL VOLUME EXPECTATIONS

Section 1: Community and Fire Department Overview

This Station Location Study for the Strathroy-Caradoc Fire Department (SCFD) analyzes and identifies current and probable community fire risks and needs over the next 10 years and beyond. This will greatly assist SCFD with future planning relating to staffing and response, fire and life safety programming, and asset management.

1.1 Community Overview

The Municipality of Strathroy-Caradoc is one of eight lower tier municipalities of Middlesex County. The municipality is bordered by Middlesex Centre on the east, Adelaide Metcalfe on the north, Southwest Middlesex on the west, and three First Nations to the south; Chippewas of the Thames First Nation, Muncey Delaware First Nation, and Onyota'Aka First Nation.

Important thoroughfares in Highway 402 and County Road 81 also serve the municipality. Three rail lines transverse the municipality. While most of Strathroy-Caradoc is agricultural, the transportation links create opportunities for industrial development.

With its history dating back to 1832, the Town of Strathroy and Township of Caradoc were amalgamated as the Municipality of Strathroy-Caradoc in 2001. Strathroy is the largest community in the Municipality, in 2021, based on Statistics Canada Census indicates Strathroy-Caradoc population was 23, 871 a change of 14.4 % growth, since 2016. Strathroy-Caradoc with a Land base of 270.86 square km. Based on 2024 Blackline consulting, Strathroy-Caradoc population is estimated at 25,877, indicating an annual growth of 2.73%

Other settlements in the Municipality include Mount Brydges, Melbourne, Campbellvale, and Delaware West, all considerably smaller than Strathroy. These settlements are primarily bedroom communities, with Mount Brydges being the largest of these with approximately 2,384 residents. In addition to the settlement area, it includes limited commercial and industrial space. Just east of Mount Brydges, there are three rural residential neighbourhoods. Melbourne has a population of approximately 300, of which roughly half live within the Strathroy-Caradoc boundary.

The Municipality has a large focus on agriculture including cash crops, tobacco, and livestock. Agriculture will continue to be a significant component of the Municipality's economic base and the predominant use of land in the rural area.

Figure 1a: Middlesex/ Strathroy-Caradoc Map

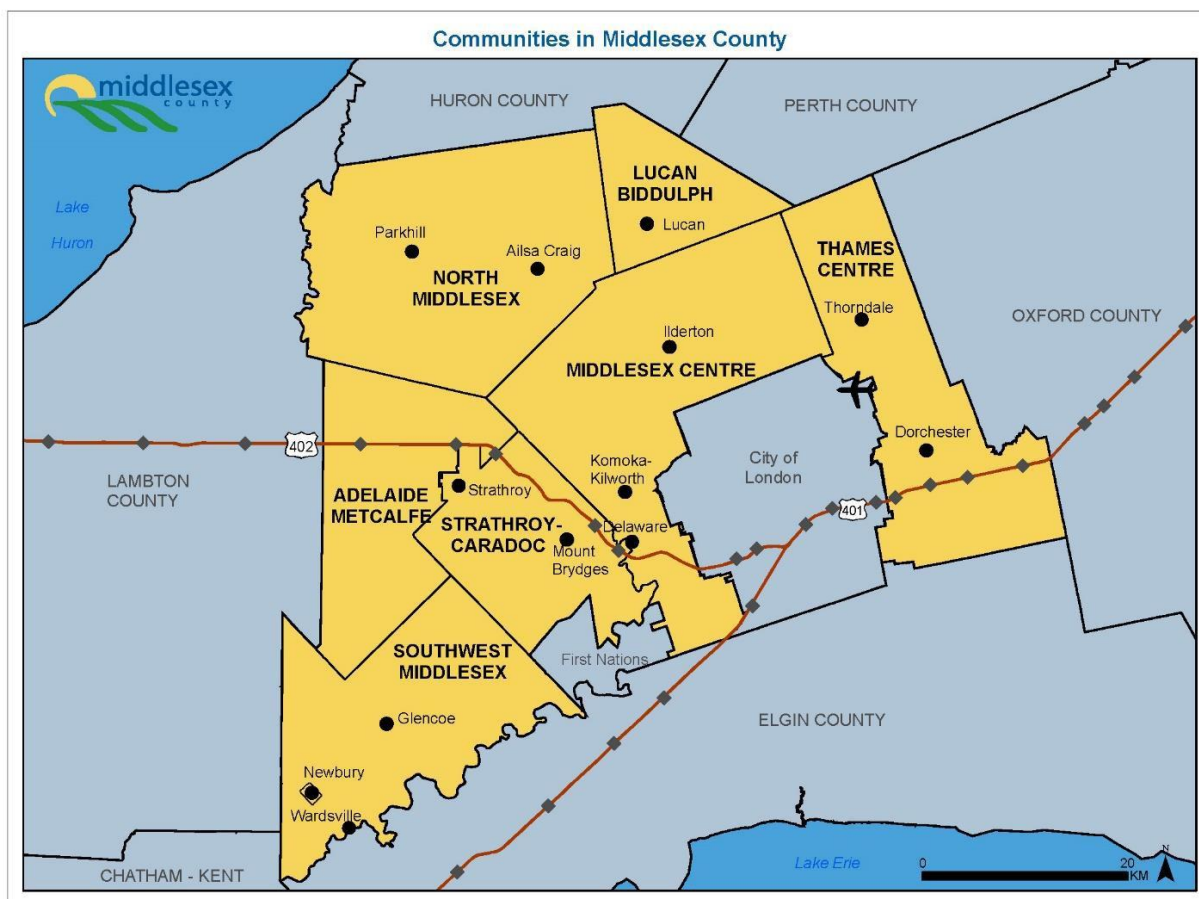
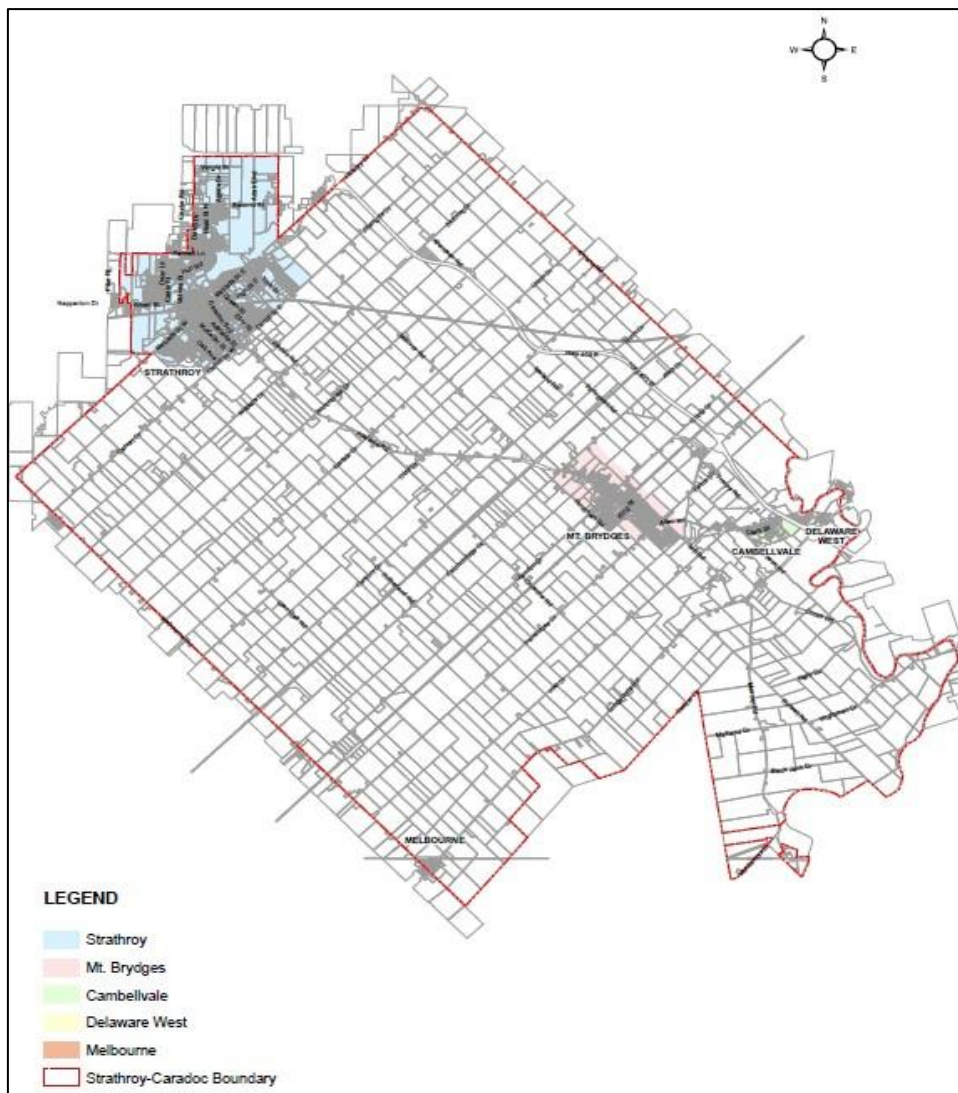
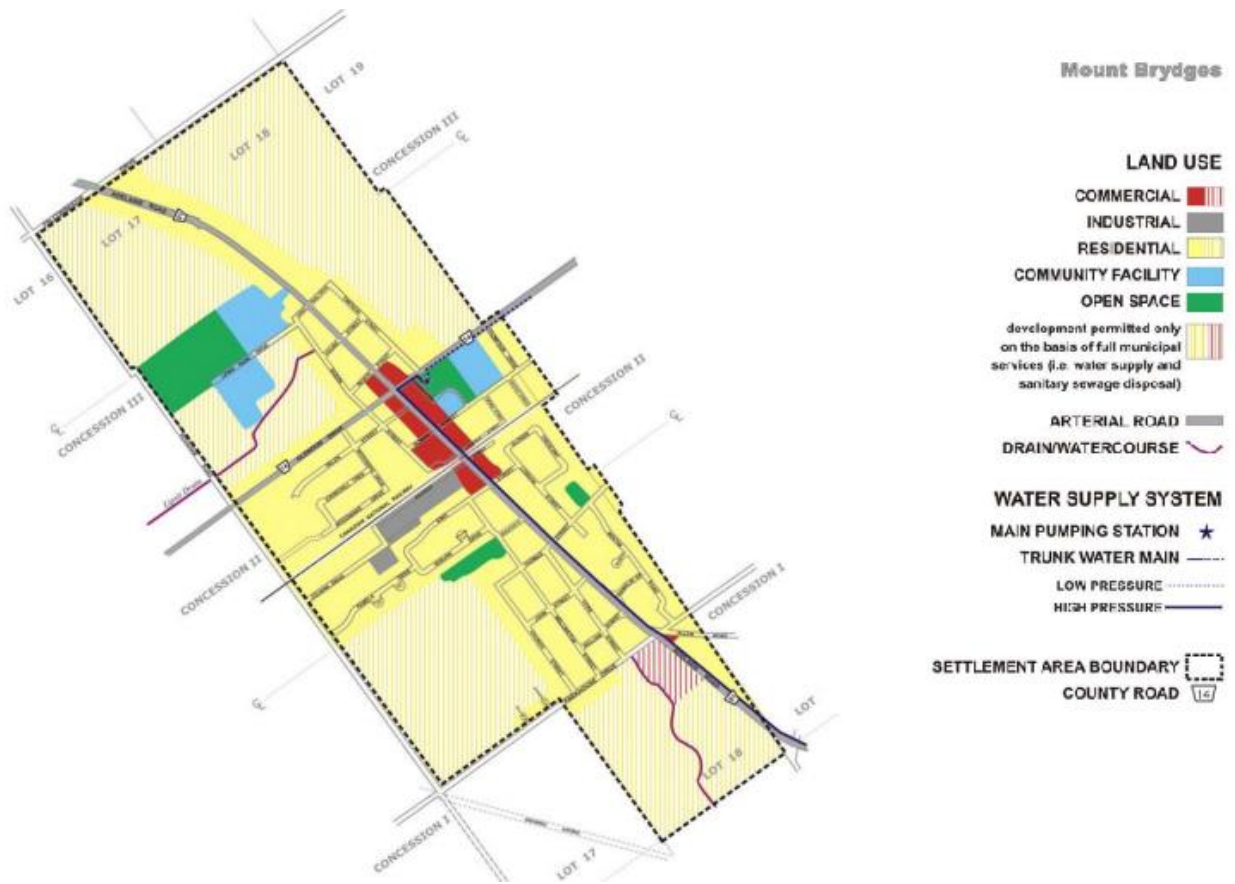


Figure 1b: Strathroy-Caradoc Overview Map

With a population estimate of 25, 877 with an annual growth of 2.73 % per year steady over the years, Strathroy-Caradoc has shown limited growth in the census years of 2001 to 2016. Since 2001, the population has grown 9.1%, albeit with some rise and fall. The 2016 Census data also shows that the median age is 43.7 years, with the provincial median age being 41.3 years.

Strathroy-Caradoc has 270.8 km² with a population density of 77.1 persons/ km².

Figure 1c: Mt. Brydges Urban Boundaries Map



SCFD Station 2 Location Study

1.2 Fire Department Composition

SCFD is comprised of 1 full-time Fire Chief, 1 full-time Fire service Coordinator, 1 full time Deputy Chief, 1 full-time Fire Prevention Officer, 1 Volunteer Deputy Chief, 2 Volunteer District Chiefs, 3 Deputy District Fire Chiefs 12 Volunteer Captains, and 60 Volunteer firefighters.

The Fire Department's operations are divided into four sections: Prevention and Public Education, Operations and Suppression, Training, and Administration.

Between 2022 and 2024, SCFD the Mt. Brydges station responded to an average of 125 emergency incidents per year.

1.3 Fire Station Locations

Figure 1d identifies the location of Station #2, which is located at 688 Bowen Street in the Village of Mount Brydges.

SCFD Station 2 Location Study

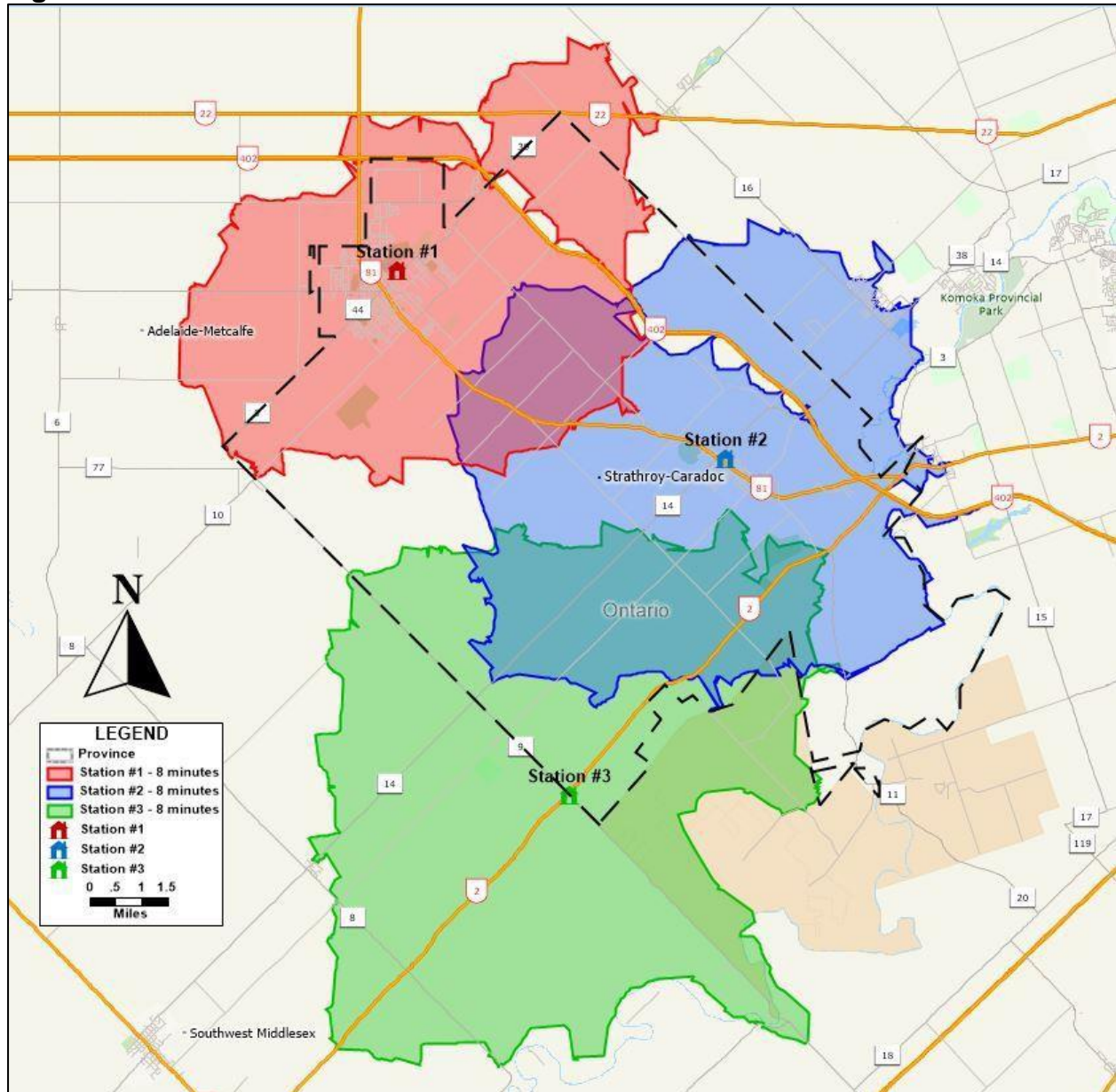
Figure 1d: SCFD Station Locations with 8-minute Travel Times

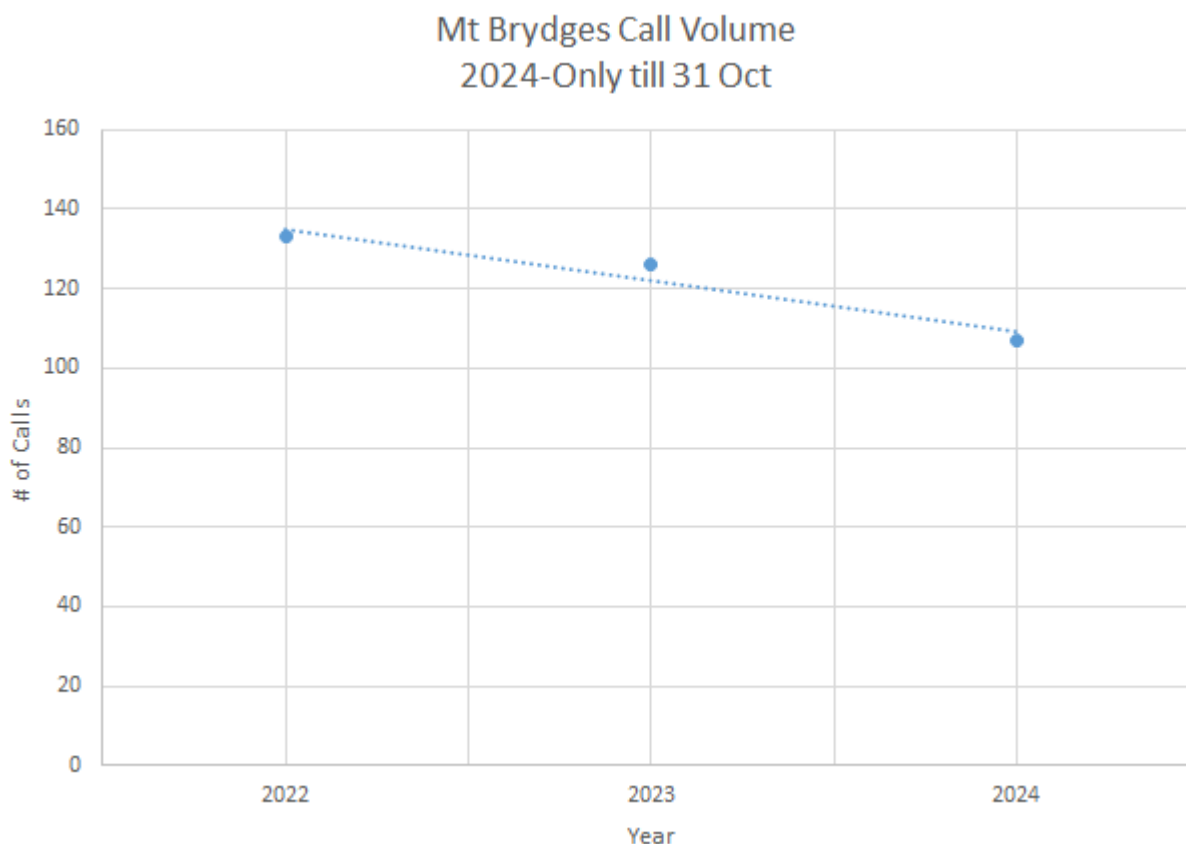
Figure 1d depicts the response coverage offered by the Mt. Brydges fire station in relation to the National Fire Protection Association (NFPA) response recommendations of 14 minutes. The map's legend notes an 8-minute travel time. This is the drive time coverage by each station, considering that it takes approximately 6 minutes for the volunteer firefighters to respond to the fire station, be geared up and depart from the station.

The recommended response time standard for rural areas (Mt. Brydges) under NFPA 1720 is 14 minutes.

SCFD Station 2 Location Study

The following chart identifies a 3-year comparison of responded Incidents for the Mt. Brydges Station. Mount Brydges covers a large portion of Hwy 402, and also backs up Strathroy and Melbourne stations for Incidents

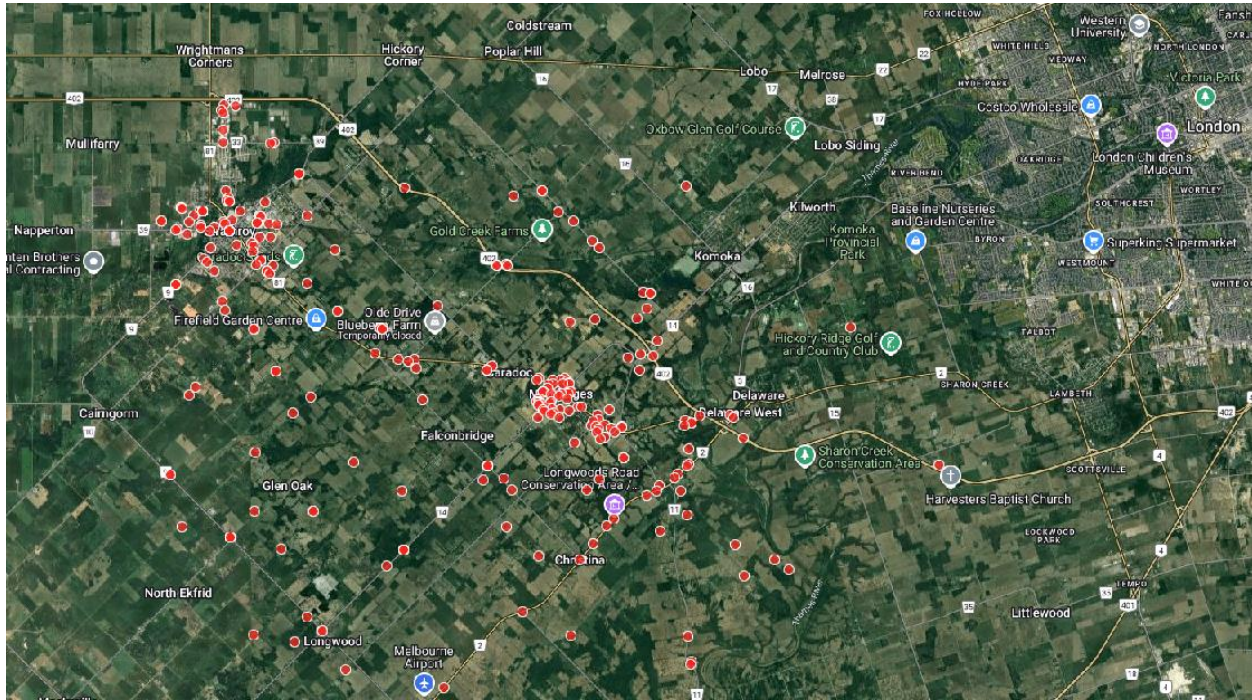
Figure 1e: 2021 Total Station 2 Calls 3 year Comparison



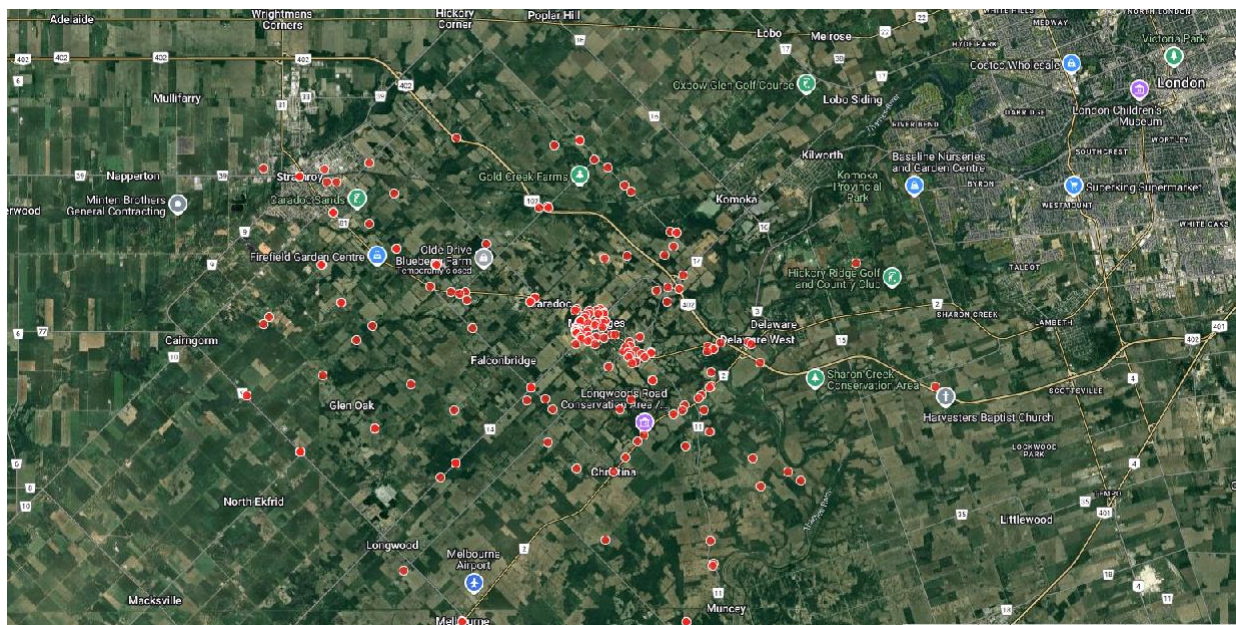
Another important consideration in reviewing call data is location. The distribution of calls is essential for SCFD to fully understand the scope of their response expectations. Identifying call clusters, whether by location or type, is a useful tool. Implementing the first two lines of defence (public education and code enforcement) can aid in reducing the amount and frequency of calls that occur in clusters. Call location is also useful in ensuring that station location is meeting the needs of Strathroy-Caradoc. If calls are consistently occurring beyond the range of efficient and reliable response times as identified in NFPA 1720, corrections and improvements must be addressed. Figure 1e Highlights the calls for service for SCFD in 2023. It also has colour shading to display the 8-minute travel time areas for each station. Figure 1f identifies the SCFD station 2 Incident calls and the assistance calls to Station1 & 3. Figure 1g identifies Mt.Bydges calls only.

SCFD Station 2 Location Study

Figure 1f: SCFD Station 2 Incident Calls & Assistance to Stations 1 & 3



SCFD Station 2 Location Study

Figure 1g: SCFD Station 2 Incident Calls

1.4 Future Call Volume Expectations

There are factors that can affect the call volume from year to year such as weather patterns, including severe storms, or major road construction projects that detour traffic. Longer-lasting changes are directly related to these factors:

- Operating procedures
- Changes in technology
- Public education
- Community growth

Modifications to operating procedures can change call volume dramatically. For example, in those communities that participate in tiered medical response, calls will often increase the overall call volume of the department by 40-100 calls resulting in as many as 20% of the fire department calls being medical related.

Changes in technology can add or reduce the number of calls that the fire department responds too. For example, the addition of CO alarms, while having the potential to save lives, adds to the number of fire department responses. In 2018, CO calls made up 20% of the department responses. As more homes tie their smoke detectors and fire alarms into monitoring stations, it is anticipated that the number of alarm calls will increase. Police services have seen a significant growth in alarm calls, with some communities getting so many that they no longer respond to alarm calls unless a secondary system or person on scene has confirmed them.

SCFD Station 2 Location Study

Public education can influence call volumes. For example, education programs, including the enforcement of penalties for multiple alarms, can reduce the number of false alarms the fire department responds to. Education and enforcement on public burning can reduce the number of grass fires and nuisance smoke complaints.

Community growth will also have an impact on calls; greater populations along with increases in commercial/ industrial properties and traffic will affect call volume growth.

On January 19, 2021, the Director of Planning for Middlesex County provided a report to the County Committee of the Whole forecasting the growth of housing and populations for the county and each municipality in the county.

In the report, a low growth scenario, reference scenario, and high growth scenario were provided for each municipality. The report predicts that the annual growth rate of Strathroy-Caradoc will range from 1.4% (low scenario) to 2.9% (high scenario). The reference scenario is 1.8%. Strathroy-Caradoc has adopted the 2.1% annual growth as their forecasted growth rate. This planned growth is limited to the suburban areas of Strathroy and Mount Brydges.

Figure 1h: Housing Forecast by Local Municipality

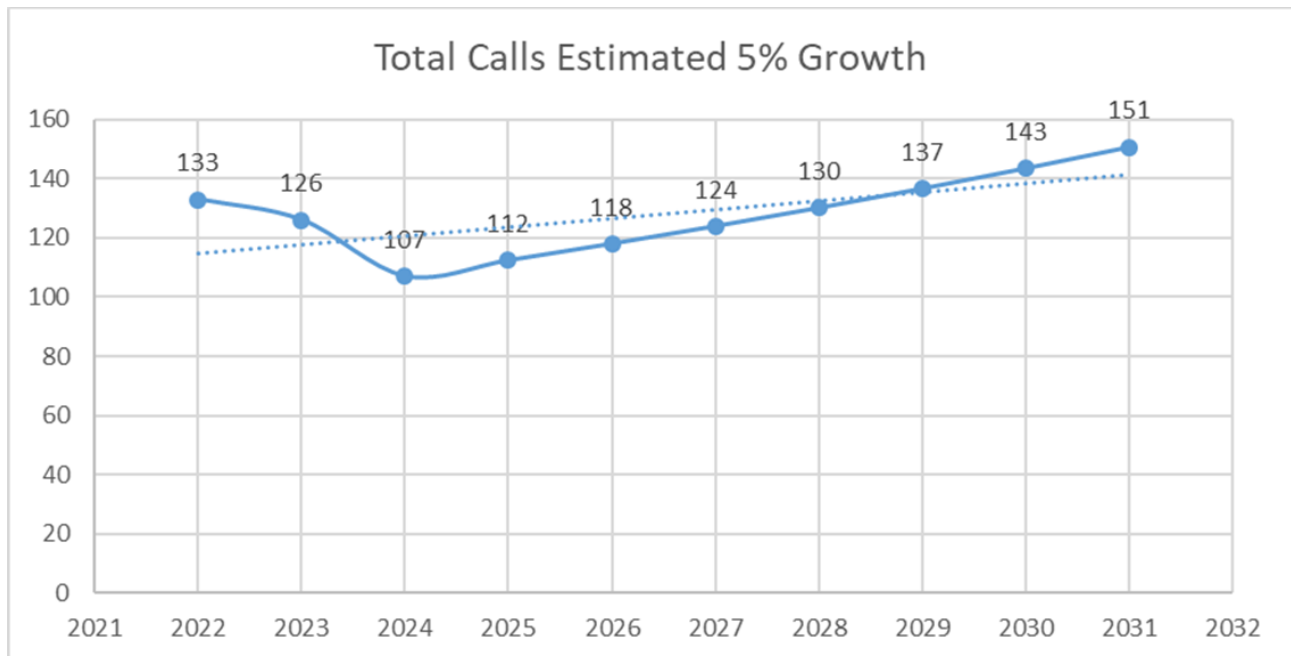
Middlesex County
Housing Forecast by Local Municipality – Low Scenario, 2016 to 2046

Year	Village of Newbury	Municipality of Southwest Middlesex	Municipality of Strathroy-Caradoc	Municipality of Thames Centre	Municipality of Middlesex Centre	Municipality of North Middlesex	Township of Adelaide-Metcalf	Township of Lucan Biddulph	Middlesex County
2016	180	2,350	8,300	4,920	5,990	2,330	990	1,790	26,820
2021	180	2,390	9,050	5,240	6,550	2,370	1,020	1,970	28,770
2026	200	2,550	9,800	5,620	7,110	2,560	1,110	2,080	31,030
2031	210	2,620	10,530	5,910	7,690	2,630	1,150	2,210	32,950
2036	220	2,680	11,230	6,220	8,430	2,700	1,190	2,380	35,060
2041	240	2,740	11,980	6,550	9,310	2,770	1,230	2,560	37,380
2046	250	2,790	12,660	6,840	10,180	2,810	1,260	2,780	39,560
Share of 2016 County Housing	1%	9%	31%	18%	22%	9%	4%	7%	100%
Share of 2046 County Housing	1%	7%	32%	17%	26%	7%	3%	7%	100%
Housing Growth									
2016-2046	70	440	4,360	1,920	4,190	480	270	990	12,740
Annual Growth Rate, 2016-2046	1.1%	0.6%	1.4%	1.1%	1.8%	0.6%	0.8%	1.5%	1.3%
Share of County Housing Growth, 2016-2046	1%	3%	34%	15%	33%	4%	2%	8%	100%

SCFD Station 2 Location Study

This forecasted growth in households appears, over the long-term, to be steady, but not overwhelming. Using the report figures to project the call volume, we can project that the call volumes of the fire department will range from 133 (low scenario) to 151 calls (high scenario) per year.

Figure 1i: 3 Year comparison Call Volume Projections Mount Brydges Station



While call volume will increase with the population growth, it will be primarily in the two developed communities of Strathroy and Mount Brydges.

SECTION 2: FIRE STATION REVIEW

2.1 STATION #2 - OVERVIEW

2.1 Fire Station Review

Station #2 is located at 688 Bowen Street, in the Village of Mount Brydges

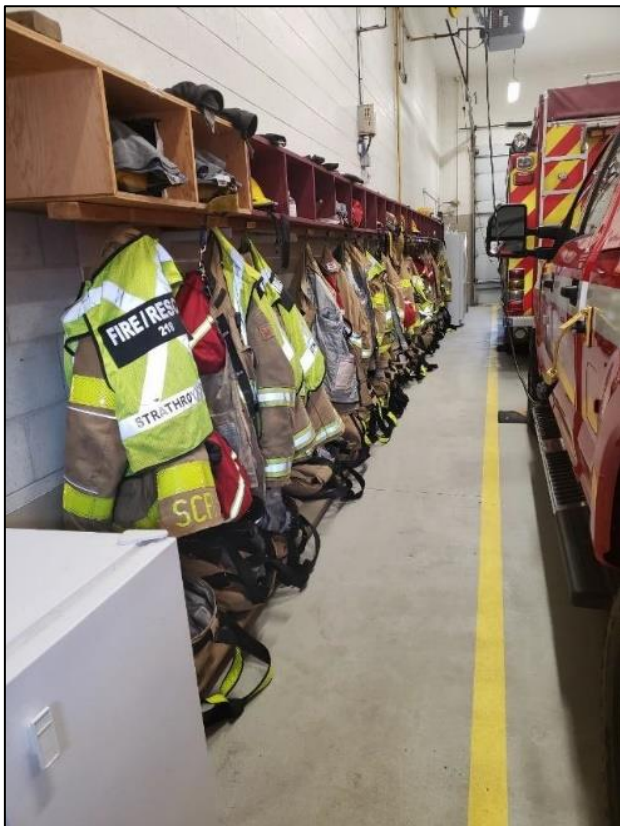
2.2 Station #2 - Overview

Station #2 is a two-bay, single length garage structure, built in approximately 1994.

This station is home to an Engine, Tanker, and Service pick-up truck, which is designed to carry crew and equipment. Although the length of the bays comfortably hold an apparatus and a pick-up truck, they would not be adequate to hold a third larger apparatus.



SCFD Station 2 Location Study



The station does not have shower facilities for the firefighters. Reducing the risk to firefighters and their families, proper showers are recommended for use following calls to decontaminate from pollutants such as blood, smoke, and chemicals.

The station has a training room but lacks a fitness room.

Firefighter bunker gear is stored on the apparatus floor exposing it to diesel fume contamination. It is recommended that bunker gear be stored in a separate ventilated room.

For the apparatus to enter the drive-through bays from the rear, they must travel over private property owned by the Royal Canadian Legion. The

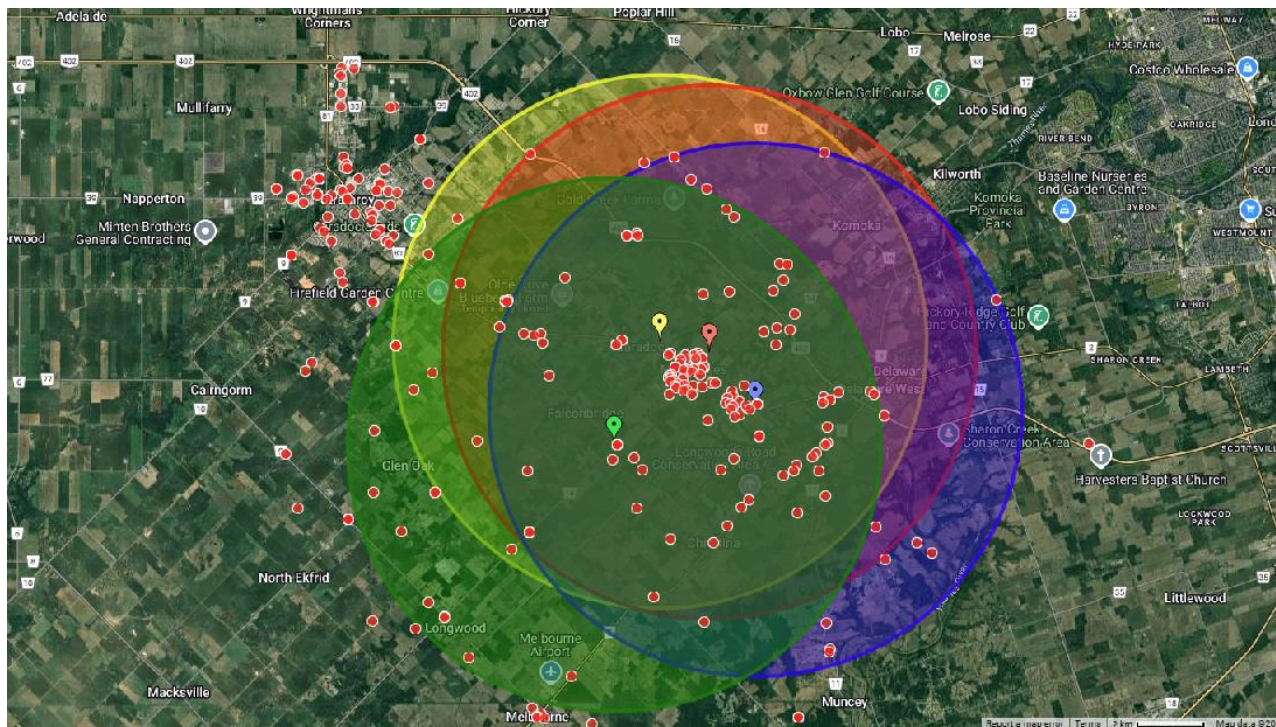
SCFD Station 2 Location Study

Municipality should confirm a right of way is in place to guarantee fire department access.

It is recommended that an addition be added to the station to include a proper office, training room, and bunker gear storage.

Using the NFPA Standard 1720 10-minute response time for a suburban response using volunteers within the core of the Mt Brydges boundaries, the following charts show the travel capabilities using a 8-minute travel time (based on a 4-minute turn out time) station options. The various colors demonstrates the area that can be covered within 8 minutes travel.

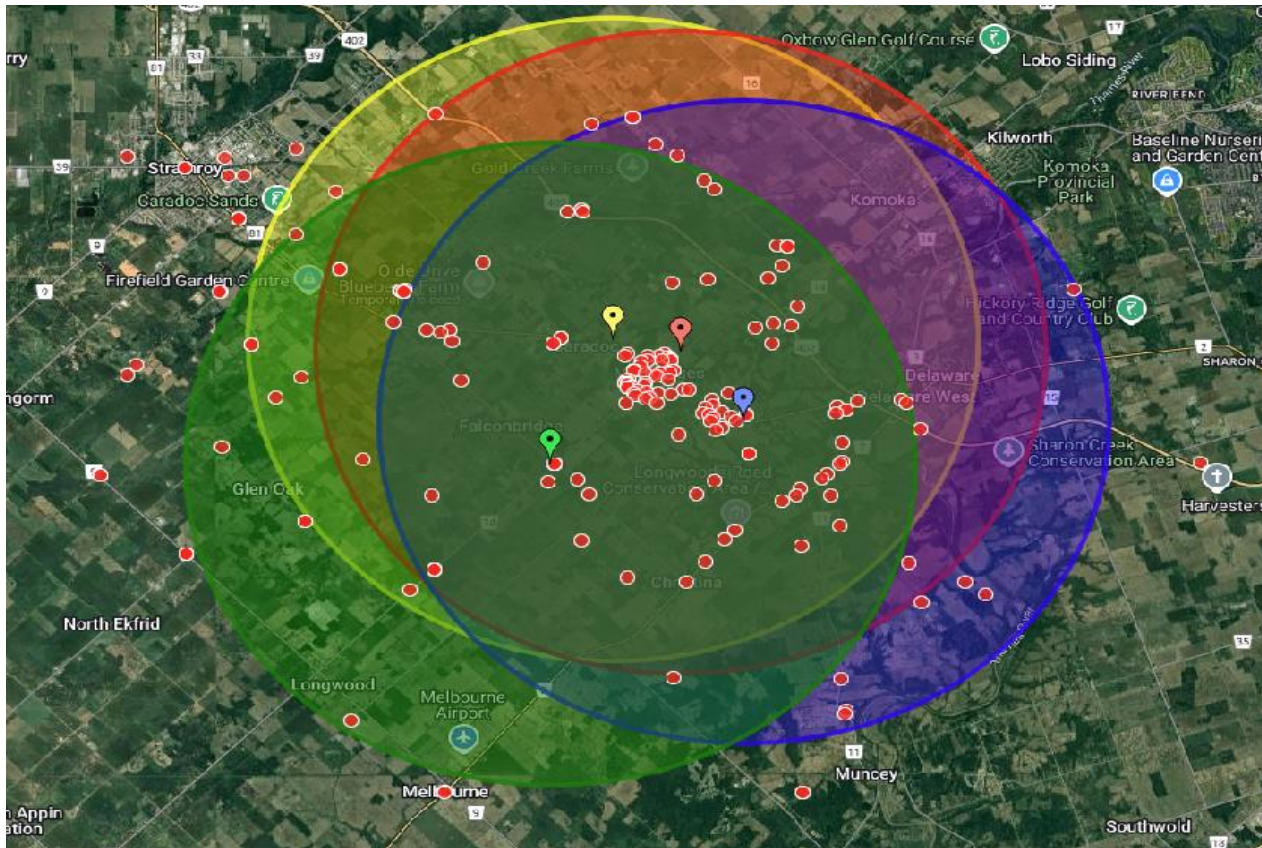
Figure 2a: SCFD Station 2 Incident Calls



Note: travel time is based on the speed limits within the community, stop signs, traffic lights, one-way streets, etc. We acknowledge that fire apparatuses are legally allowed to exceed the speed limit while using lights and sirens when safe to do so, therefore under light traffic conditions and good weather, the fire trucks can reach a further distance than noted.

SCFD Station 2 Location Study

Figure 2b: SCFD Station 2 Incident Calls



Station #2 - Solutions

Station #2 in Mount Brydges is landlocked and has no room for expansion. As the community grows and there is a transition to a composite staffing model at the station, there is the ability to adjust the location of the station.

Taking into consideration that Station #3 there would be the opportunity to build one station that could serve Mount Brydges and cover the response requirements over to the hamlet of Melbourne.

A station along County Road 14 (Glendon Dr.) between Christina Road and Rougham Road would ensure a 2–3-minute travel time into the core of Mount Brydges, while providing good north / south access and west access to the western boundary of the municipality.

While there would be a 9-minute travel time to Melbourne, the current Melbourne Station had a 9 minute, 50 second 80th percentile turnout time (time for the first truck to leave the station). In other words, a career truck based just west of Mount Brydges would have a similar response time as a volunteer truck based right in Melbourne.

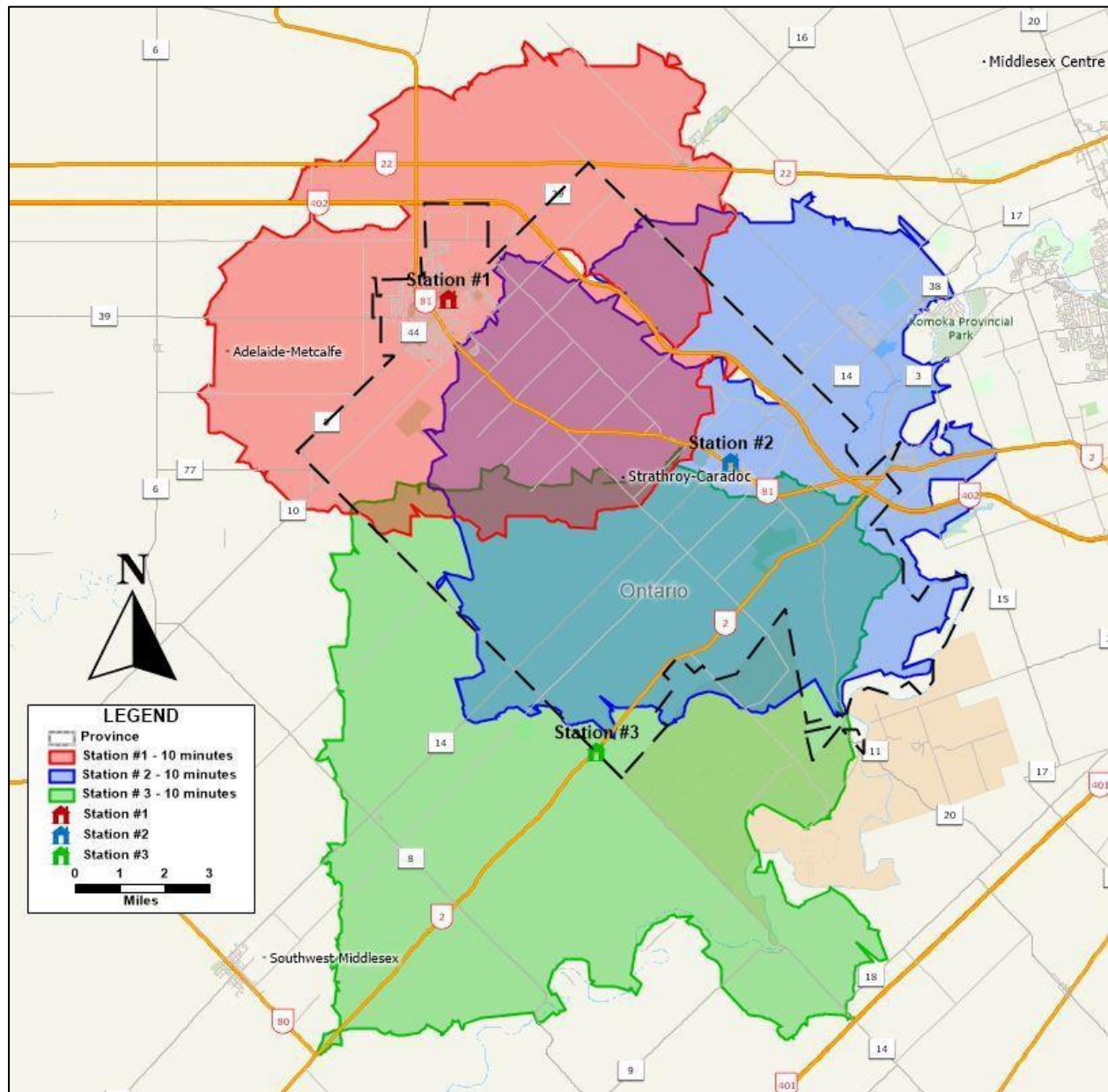
The Melbourne Station averages 48% of its calls within the municipality of Strathroy-Caradoc. From 2020 – 2023, the station averaged 40 responses per year (34 in 2020) with an average of 19 calls within the municipality. This number of calls could be easily incorporated into the response capabilities of Station #2.

Using the NFPA Standard 1720 14-minute response time for a rural response using volunteers within the core of the Strathroy-Caradoc boundaries, the following charts show the travel capabilities using a 10-minute travel time (based on a 4-minute turnout time) for the two station options in the south. The beige area illustrates the area that can be covered within 8 minutes travel.

The first map shows the current station locations with a 10-minute travel time. As can be seen, the municipality, with only a small area to the southern border, is covered within a 10-minute travel time. A challenge, however, is that the Melbourne Station (Station #3) has more than a 9-minute (80th percentile) turnout time. Therefore, the area covered by the green Station #3 area does not reflect a realistic response time.

SCFD Station 2 Location Study

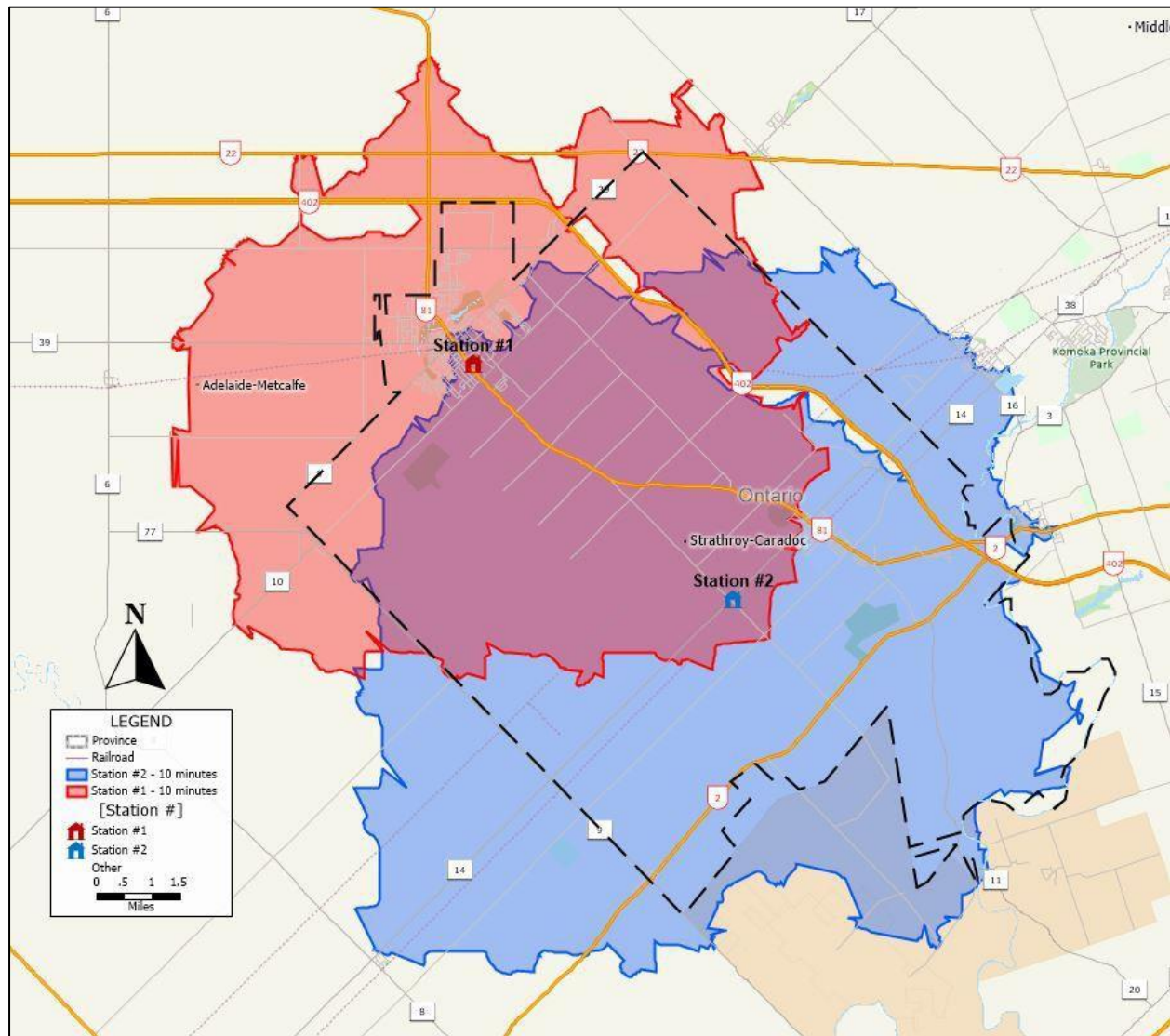
Figure 2c: 10-Minute Travel Grid from Current Stations



The following map provides a 10-minute travel time from a station located at Glendon Drive and Christina Road. The map clearly demonstrates that the municipality can be covered effectively from a two-station model.

SCFD Station 2 Location Study

Figure 2d: 10-Minute Travel Grid from Two New Stations



When we further examine where the firefighters live in relation to their assigned fire stations, we note very few firefighters live in proximity to Station #3, which contributes to the extended turnout times. Using a 6-minute travel time to the station, the map shows that approximately half of the Station #3 volunteers live more than 6 minutes from the station.

SECTION 3: CONCLUSION

3.1 Conclusion

3.2 Phase 2

3.1 Conclusion

We have provided 4 options for the location of the Mt. Brydges station. The municipality has two fire stations that have capacity and structural challenges that are limiting their long-term life span.

3.2 Phase 2

Phase 2 of the fire service station plan would be to procure land on **Glendon Drive between Christina Road and Rougham Road** for a new Station #2. This station would adequately serve both Mount Brydges and Melbourne.

The new station could be built to accommodate a volunteer deployment initially but be designed to expand to accommodate career firefighters in the more distant future.

With this model, the municipality of Southwest Middlesex would be required to cover a larger portion of their own municipality as the Melbourne Station currently covers a large portion west of County Road 9.

Option Falconbridge offers easy access to Strathroy where many calls require Mt Brydges - Station 2 as back up or second station in. This land is currently the SCFD training ground and the municipality already owns the land. This location would allow a quick response to all areas of Mt Brydges urban growth boundaries.

Option Glendon Drive in close proximity of Mt Brydges Ford would be the most central location with easy access out covering the entirety of the urban growth boundary, and is a quick response into Strathroy as a second station. It also provides the best access to the 402 for MVC's.

Option Parkhouse/Allen Rd area this area would be at the outer limits of the urban growth area and the longest response time to Strathroy. This area is on the opposite side of the tracks, which could create a time delay however; this line has significantly fewer trains than the line dividing Strathroy. This location is next to new development and quickest to Delaware West. However is not the best location when considering the 3-year call history locations.

This project should take place in the long-term (3-5 years).